

PAN

ZP8077.1900

Built-in thermostatic shower mixer with volume control.




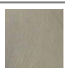


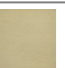

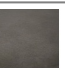



3/4" built-in thermostatic shower mixer with 1 volume control. 8 GPM @ 43,5 PSI.

R99630.1900

Rough-in

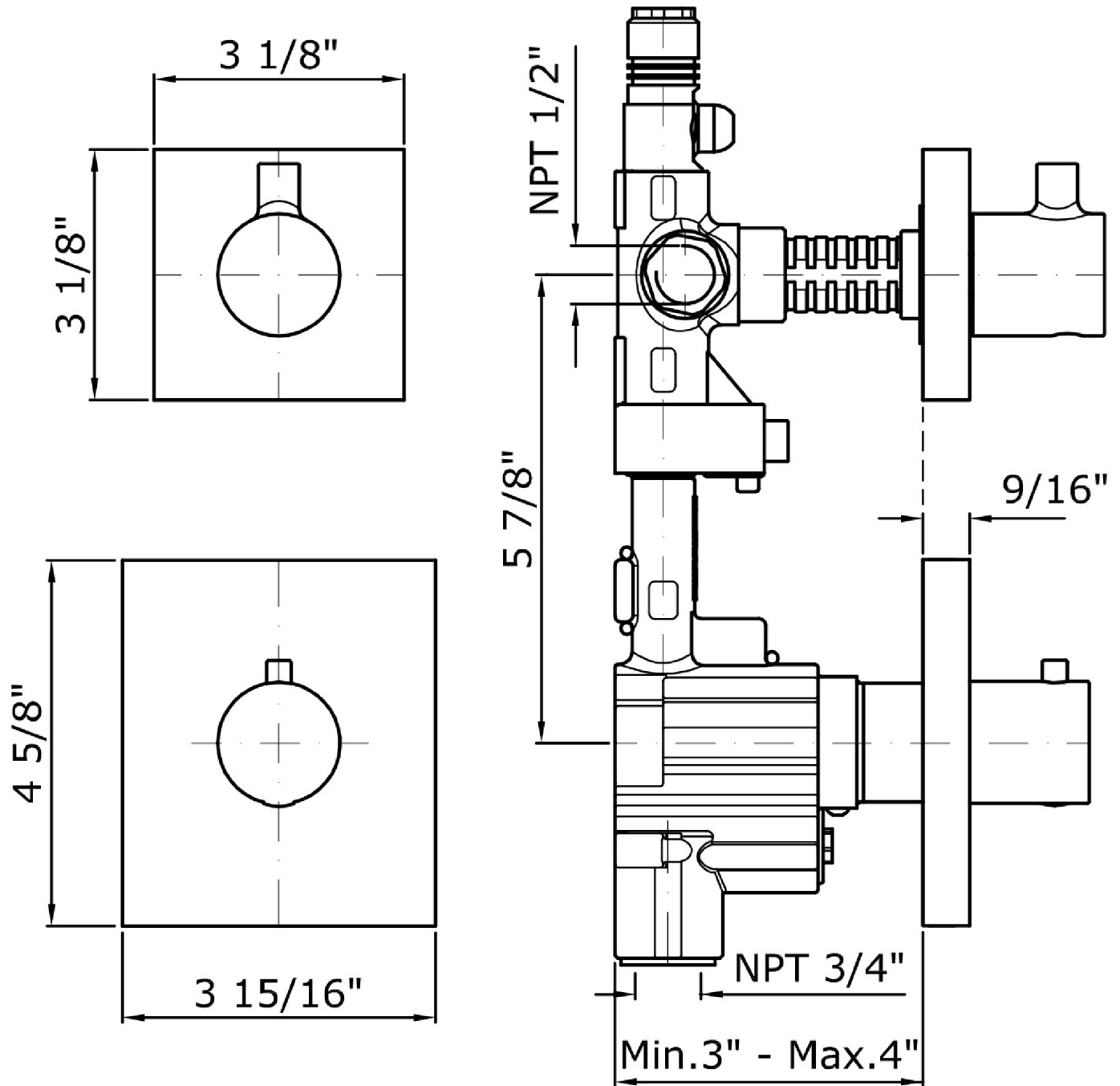


Finiture / Finishes

	 C3	 C8	 C40	 C41	 C50	 C51
Chrome	Brushed Nickel	Polished Nickel	Gold	Brushed Gold	Metal Black	Brushed Metal Black
 W1	 N1	 N7				
Embossed Matt White	Embossed Matt Black	Soft Touch Black				

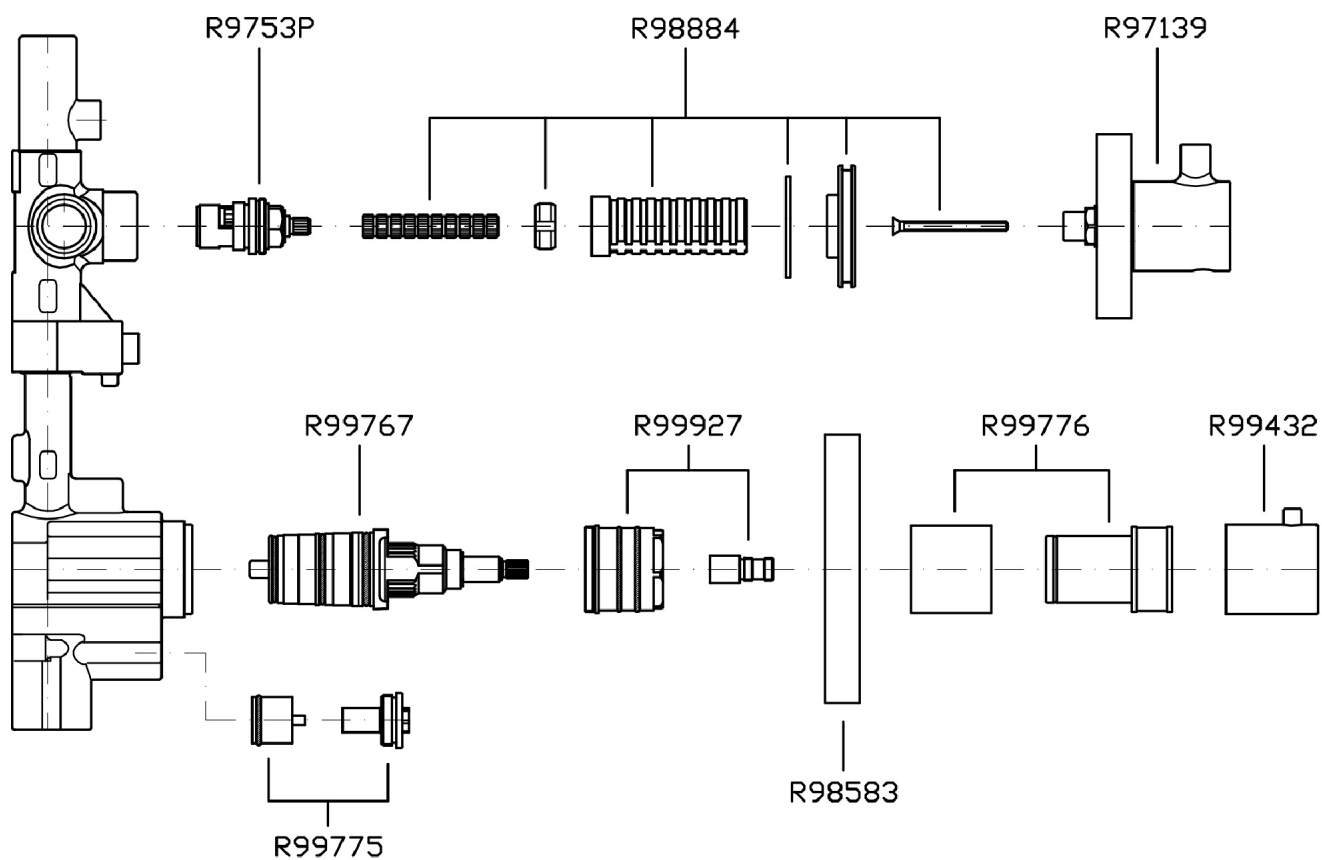
PAN

ZP8077.1900 Disegno Complessivo / Overall Drawing



PAN

ZP8077.1900 Esplosi / Exploded



PAN

ZP8077.1900 Pesì e Misure / Weights and Sizes

Peso (Kg) Weight (lb)	1,32 (Kg)	2,91 (lb)
Volume test (dc3) - (in3)	11,01 (dc3)	671,87 (in3)
h (mm) - (in)	90,00 (mm)	3,54 (in)
L1 (mm) - (in)	335,00 (mm)	13,19 (in)
L2 (mm) - (in)	365,00 (mm)	14,37 (in)

