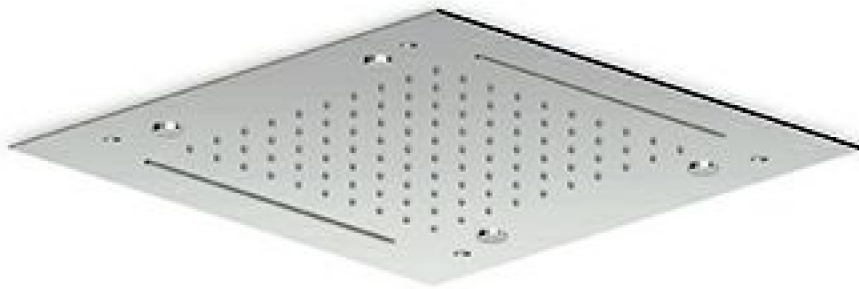


## SHOWER

Z94229

16 15/16" x 16 15/16" ceiling mounted multifunction shower system.



16 15/16" x 16 15/16" ceiling mounted stainless steel multifunction shower system. Jets: rain, blade and atomising (spray). To b

### Finiture / Finishes



Chrome



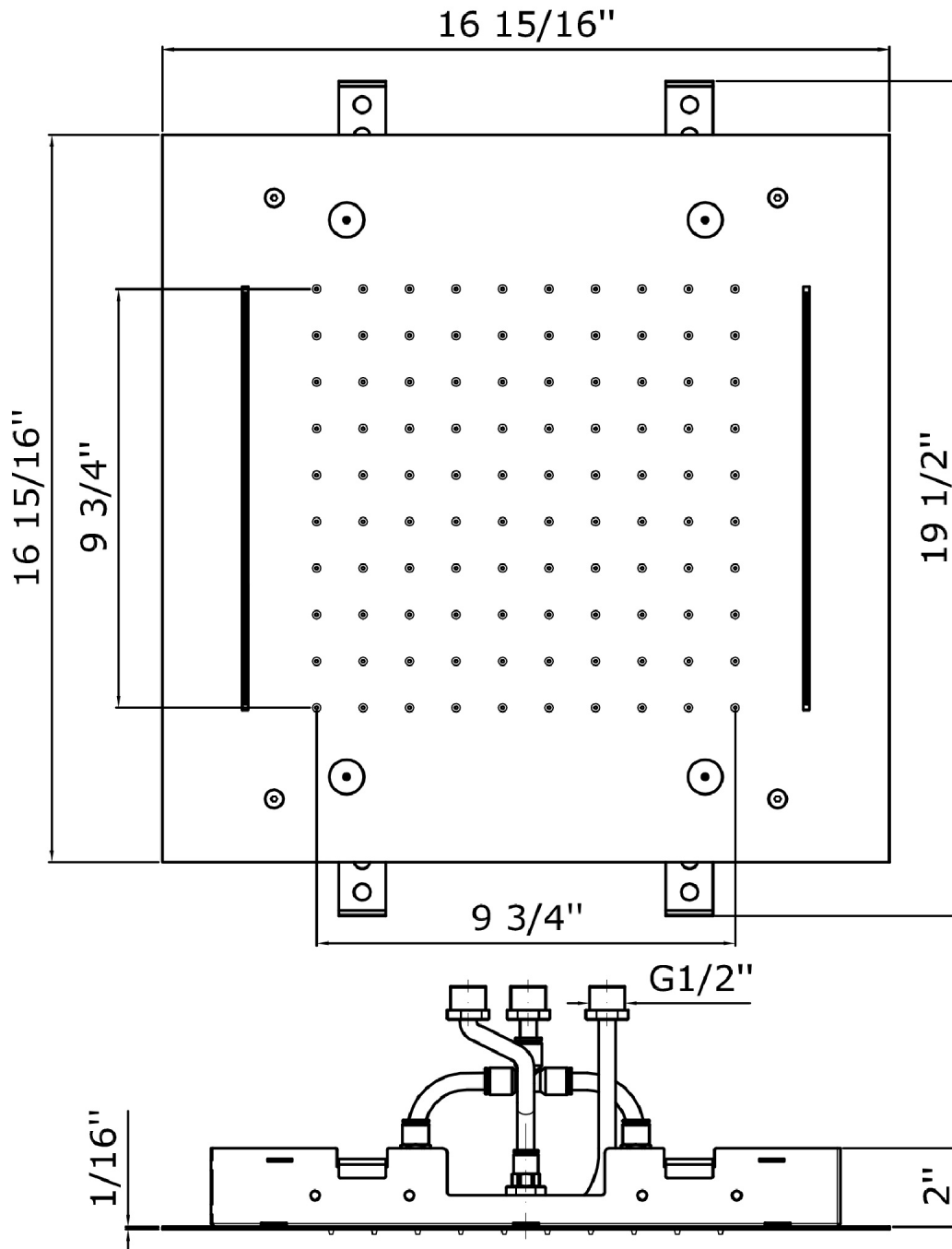
Brushed Nickel

C3

## SHOWER

Z94229

Disegno Complessivo / Overall Drawing



## SHOWER

Z94229

Pesi e Misure / Weights and Sizes

Peso ( Kg ) Weight ( lb )	7,43 ( Kg )	16,38 ( lb )
Volume test ( dc3 ) - ( in3 )	36,78 ( dc3 )	2244,63 ( in3 )
h ( mm ) - ( in )	90,00 ( mm )	3,54 ( in )
L1 ( mm ) - ( in )	610,00 ( mm )	24,02 ( in )
L2 ( mm ) - ( in )	670,00 ( mm )	26,38 ( in )

