

SHOWER

Z93807.1900

Wall elbow.



Wall elbow 1/2" x 1/2".

Finiture / Finishes



Chrome



Brushed Nickel

C3



Polished Nickel

C8



Embossed Matt White

W1

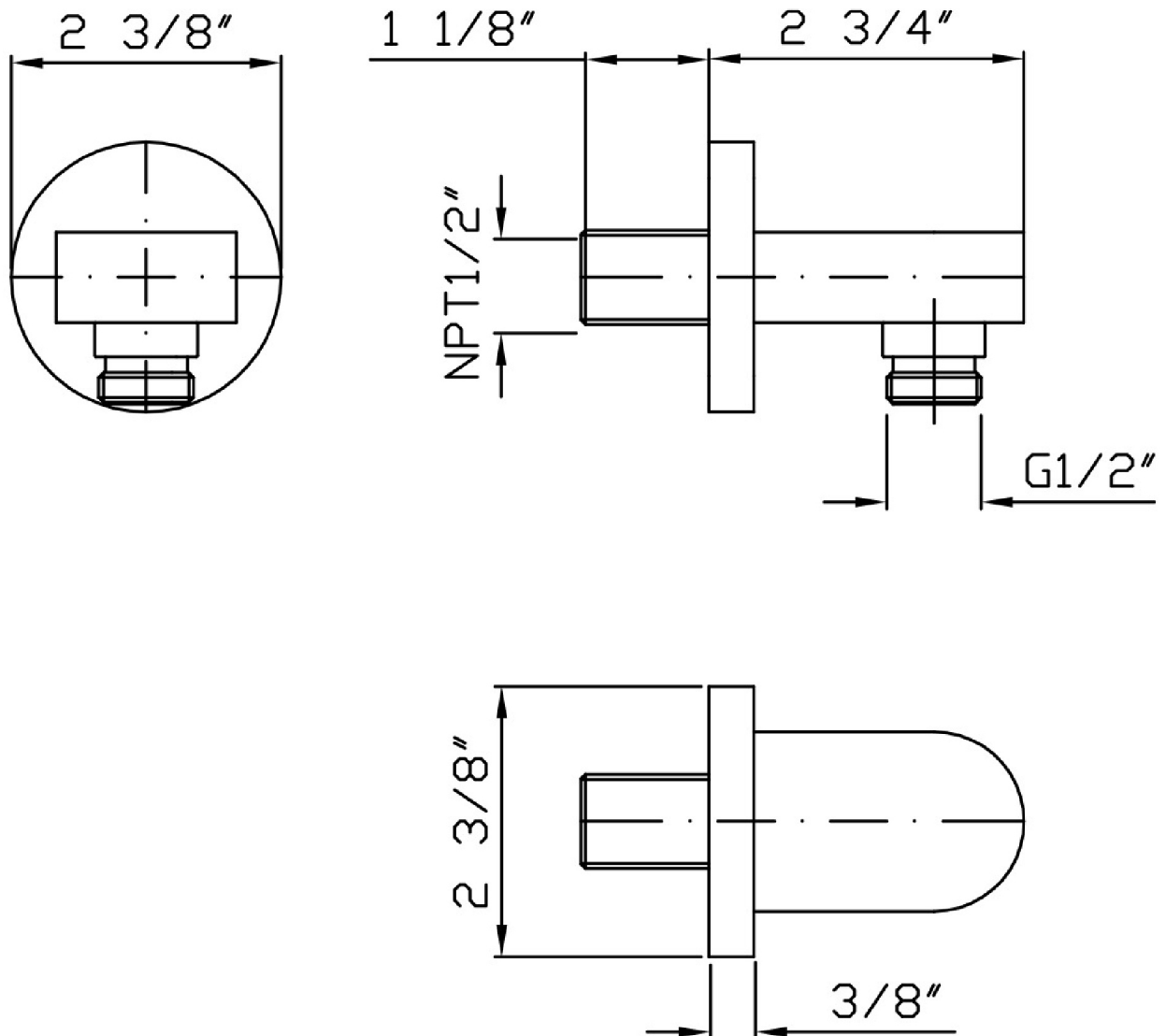


Embossed Matt Black

N1

SHOWER

Z93807.1900 Disegno Complessivo / Overall Drawing



SHOWER

Z93807.1900

Certificazioni / Certifications

USA

IAPMO

SHOWER

Z93807.1900

Pesi e Misure / Weights and Sizes

Peso (Kg) Weight (lb)	0,67 (Kg)	1,48 (lb)
Volume test (dc3) - (in3)	1,21 (dc3)	73,84 (in3)
h (mm) - (in)	73,00 (mm)	2,87 (in)
L1 (mm) - (in)	127,00 (mm)	5,00 (in)
L2 (mm) - (in)	130,00 (mm)	5,12 (in)

