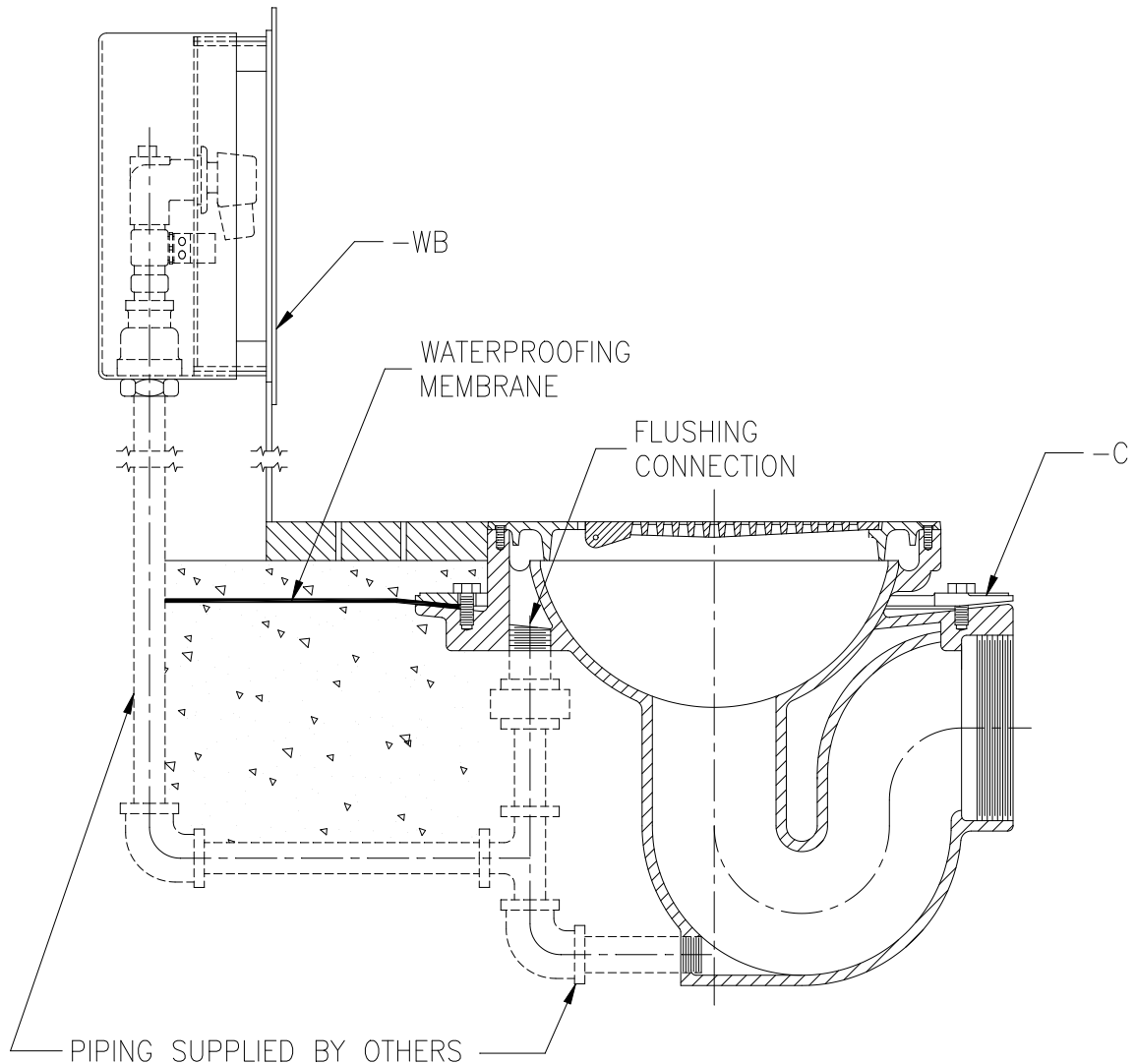




TYPICAL INSTALLATION FOR Z300-C-WB FLOOR DRAIN

Dimensional Data (inches and [mm]) are Subject to Manufacturing Tolerances and Change Without Notice



Z300-C-WB THOROFLUSH DRAIN

Thoroflush Drain is designed for use in areas where frequent flushing and cleanliness is required. Drain is illustrated with clamping collar (-C) and water supply control box (-WB). The Z300 is also available with a loose set grate (-LG) or integral grate (-IG) if desired.

- ⚠ **WARNING:** Cancer and Reproductive Harm - www.P65Warnings.ca.gov
- ⚠ **ADVERTENCIA:** Cáncer y daño reproductivo - www.P65Warnings.ca.gov
- ⚠ **AVERTISSEMENT:** Cancer et effets néfastes sur la reproduction - www.P65Warnings.ca.gov

Zurn Industries, LLC | Specification Drainage Operation
1801 Pittsburgh Avenue, Erie, PA U.S.A. 16502 · Ph. 855-663-9876, Fax 814-454-7929
In Canada | Zurn Industries Limited
3544 Nashua Drive, Mississauga, Ontario L4V 1L2 · Ph. 905-405-8272, Fax 905-405-1292
www.zurn.com

Rev. A
Date: 04/06/2018
C.N. No. 139849
Form No. FD17