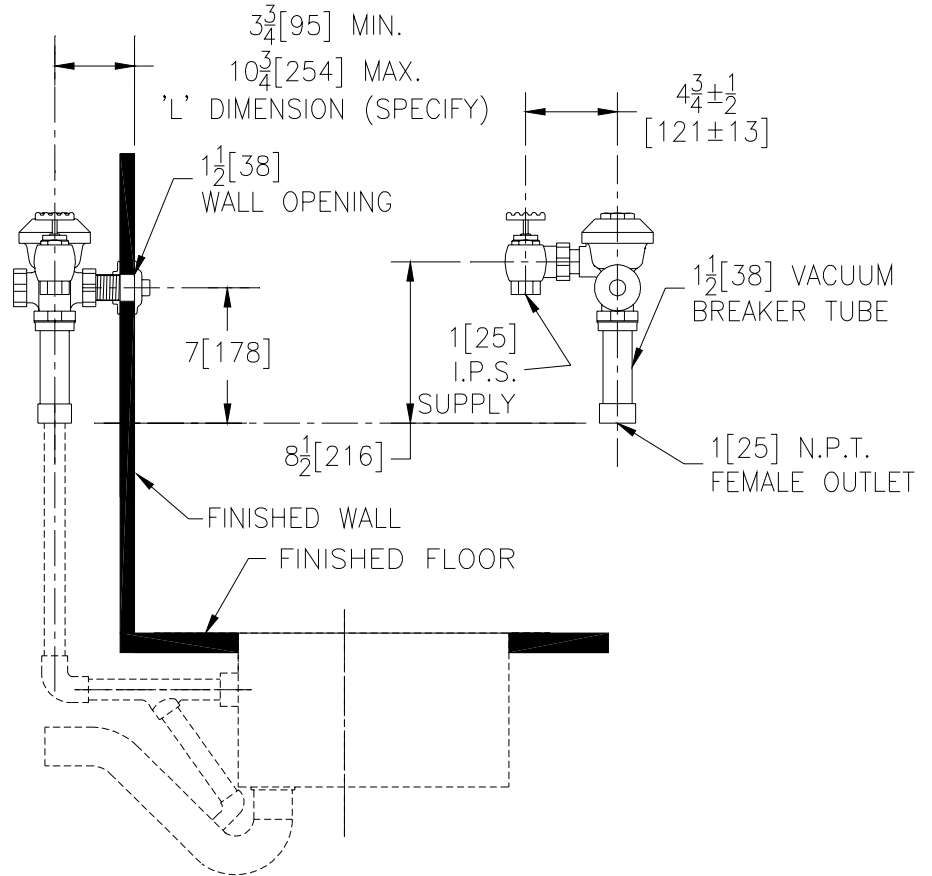




Concealed Z6621AV Model for Detox Drain



Flow Options

- WS1** 1.6 Gal. Low Consumption
- FF** 4.5 Gal. Full Flush
- Standard Flush** 3.5 Gallons Per Flush

Suffix Options (Check/Specify Appropriate Options)

_____ Other

ENGINEERING SPECIFICATION: ZURN Z6621AV AquaVantage® 'AV' Concealed Flush Valve For Detox Drain-

Concealed, quiet diaphragm-type, rough brass flushometer valve with Zurn's AquaVantage® TPE, chloramine resistant, dual seal diaphragm with a clog resistant, triple filtered by-pass. The valve incorporates a non-hold-open, no leak push button with a 1"[25] metal push button, high back pressure vacuum breaker, one piece hex coupling nut and adjustable tailpiece. Control stop has internal siphon-guard protection and sweat solder kit. Internal seals are made of chloramine resistant materials.

This space is for Architectural/engineering Approval