



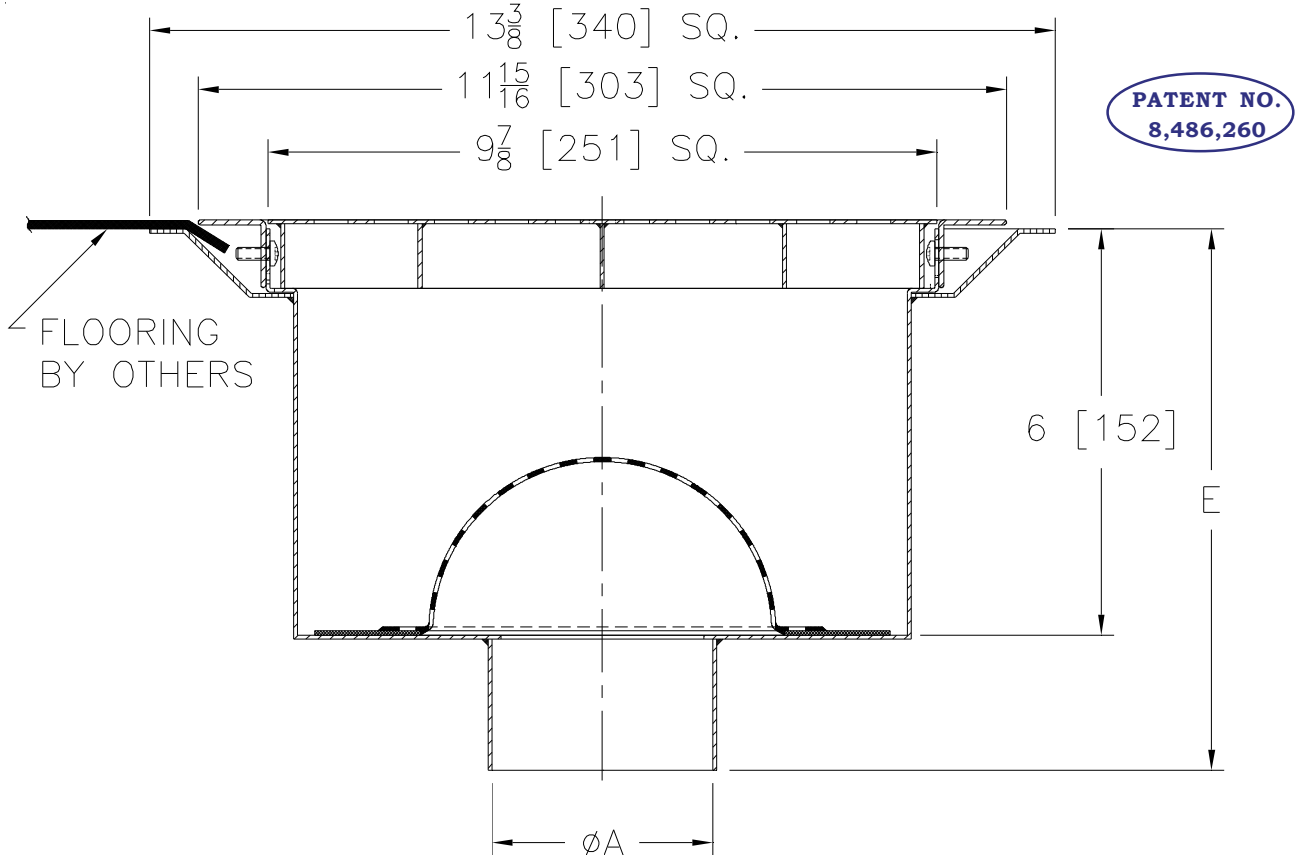
Z1755

13-3/8 [340] SQ. SANI-FLOR RECEPTOR 6 [152] SUMP W/ ADJUSTABLE CLAMP FRAME

SPECIFICATION SHEET

TAG _____

Dimensional Data (inches and [mm]) are Subject to Manufacturing Tolerances and Change Without Notice



A- Pipe Size In. [mm]	Approx. Wt. Lbs. [kg]	Grate Open Area Sq. In. [cm]
2, 3, 4 [51, 76, 102]	10 [5]	25 [161]

ENGINEERING SPECIFICATION: ZURN Z1755
 13-3/8" [340mm] Square x 6" [152mm] deep, 16 gage, All Type 304 (CF8) Fabricated stainless steel light-duty Sani-Flor receptor with Integral flooring clamp frame and non-tilt loose-set full grate with interior dome strainer for unlevel floor installations.

OPTIONS (Check/specify appropriate options)

PIPE SIZE

2, 3, 4 [51, 76, 102]

(Specify size) **OUTLET**

____ NH No-Hub

'E' BODY HT. DIM.

8 [203]

PREFIXES

- ____ Z Type 304 (CF8) Stainless Steel Body*
- ____ ZM Type 316 (CF8M) Stainless Steel

SUFFIXES

- ____ -P 1/2 [13] Trap Primer Connection
- ____ -2 1/2 Grate
- ____ -3 3/4 Grate

* Regularly furnished unless otherwise specified.