



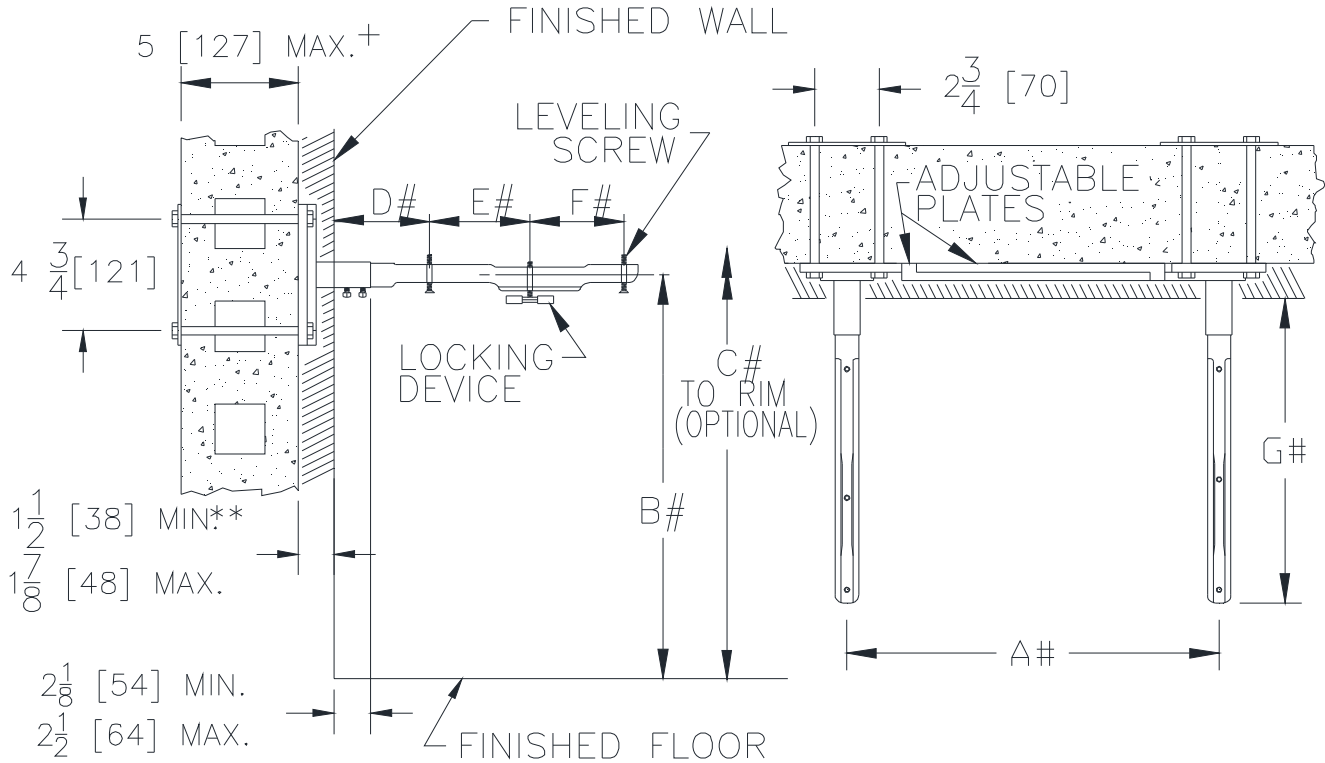
Z1253

ADJUSTABLE CONCEALED ARM SYSTEM WALL SUPPORTED

SPECIFICATION SHEET

TAG _____

Dimensional Data (inches and [mm]) are Subject to Manufacturing Tolerances and Change Without Notice



NOTE:

- ** WITH STANDARD SLEEVE LENGTH OF 4 [102]
- + WITH STANDARD STUD LENGTH OF 6 [152]
- # REFER TO ROUGH-IN GUIDE OF SPECIFIC FIXTURE FOR DIMENSION

| Product No. | Approx. Wt. Lbs. [kg] |
|-------------|-----------------------|
| Z1253 | 18 [8] |

ENGINEERING SPECIFICATION: ZURN Z1253

Lavatory support with concealed arms. Complete with adjustable Dura-Coated support plates with arm sleeves, concealed arms, and mounting fasteners.

OPTIONS (Check/specify appropriate options)

PREFIXES

___ Z Dura-Coated System with Concealed Arms*

SUFFIXES

___ -79 ADA Rough-in

* Regularly furnished unless otherwise specified.