

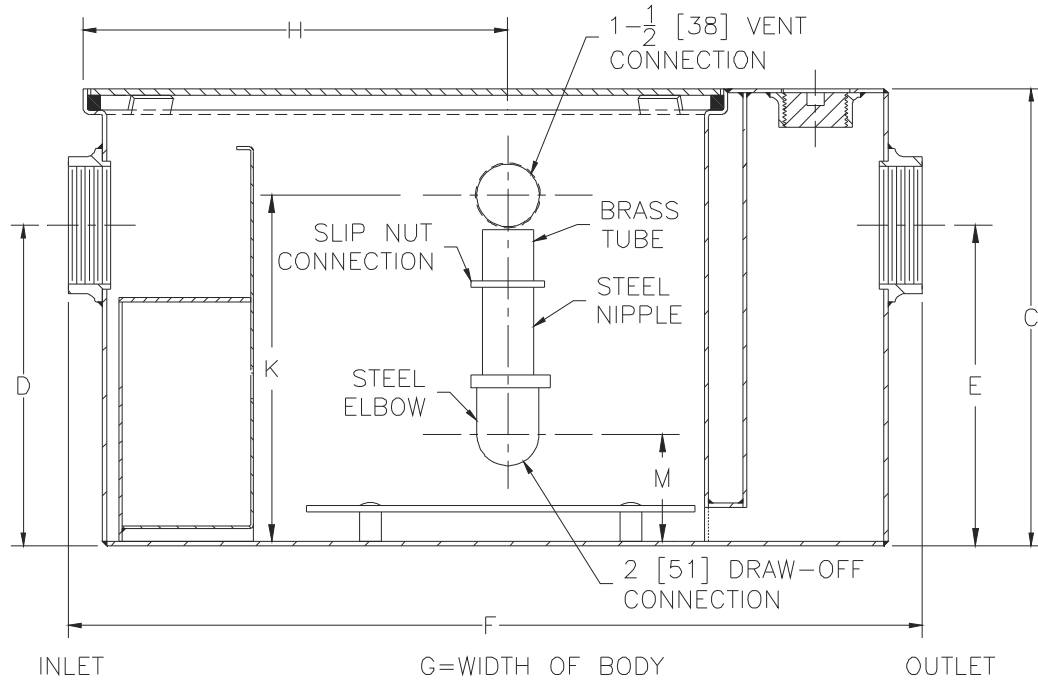


# Z1186 OIL INTERCEPTOR

SPECIFICATION SHEET

TAG \_\_\_\_\_

Dimensional Data (inches and [ mm ]) are Subject to Manufacturing Tolerances and Change Without Notice



Size	Inlet/Outlet Size **	Flow Rate GPM [L]	Water Cap. Gal. [L]	Approx. Wt.Lbs. [kg]	Dimensions In Inches [mm]						
					C	D/E	F	G	H	K	M
300	2 [51]	10 [38]	7 [26]	56 [25]	13-5/8 [346]	8-1/8 [206]	22-5/8 [575]	14 [356]	8-3/4 [222]	11 [279]	4-1/4 [108]
400	2 [51]	15 [57]	9 [34]	77 [35]	14 [356]	8-1/4 [210]	22-3/4 [578]	14-1/8 [359]	10-3/4 [273]	11 [279]	4-3/8 [111]
500	3 [76]	20 [76]	10 [38]	106 [48]	15-1/2 [394]	9-3/8 [238]	24-5/8 [625]	16-3/4 [425]	13-1/4 [336]	12-1/2 [318]	5-1/2 [140]
600	3 [76]	25 [94]	16 [60]	116 [53]	18-1/4 [464]	11-3/4 [298]	27-1/2 [699]	17-1/4 [438]	15-1/2 [394]	15-1/4 [387]	6-1/4 [159]
700	3 [76]	35 [132]	21 [79]	140 [64]	19-3/4 [502]	12-1/2 [318]	29-7/8 [759]	19-7/8 [505]	15-7/8 [403]	16-3/4 [425]	6-3/8 [162]
800	3 [76]	50 [189]	30 [113]	171 [78]	24-1/4 [616]	14-1/4 [362]	31-3/4 [806]	22-1/2 [572]	16-7/8 [429]	21-1/4 [540]	8-1/8 [206]

**ENGINEERING SPECIFICATION: ZURN Z1186**

Acid Resistant Coated interior and exterior fabricated steel oil interceptor, bronze cleanout plug and visible double wall trap seal, removable combination pressure equalizing/flow diffusing baffle and sediment bucket, horizontal baffle, adjustable oil draw-off and vent connections either side, secured gasketed non-skid cover, complete with flow control fitting. Regularly furnished with inlet and outlet in high position.

Note: Location of outlet from bottom of interceptor cannot be changed.

**OPTIONS** (Check/specify appropriate options)

**PREFIXES**

\_\_\_ Z Acid Resistant Coated Fabricated Steel\*

**SUFFIXES**

- \_\_\_ -E Acid Resistant Coated Interior and exterior fabricated steel extension section. (Specify 'C' Dim. required) for recessed installation.
- \_\_\_ -HD Heavy duty traffic cover rated at 10,000 lbs. [4536] Kg. maximum safe live load. A 3 [76] minimum extension height is required when heavy-duty cover (-HD) option is specified. (Specify 'C' Dim. height required.)
- \_\_\_ -K Anchor flange 1-3/4 [44] down from top and 2 [51] wide. A 3 [76] minimum extension height is required when anchor flange (-K) option is specified. (Specify 'C' Dim. height required.)
- \_\_\_ -KC Anchor flange 1-3/4 [44] down from top and 2 [51] wide with clamp collar.

\*\* Inlet and outlet sizes shown indicate standard operating sizes and flow control setting. Size #300 and #400 will have 3 [76] connections reduced to 2 [51] standard. Size #700 and #800 will have 4 [102] connections reduced to 3 [76] as standard.

\* Regularly furnished unless otherwise specified.