

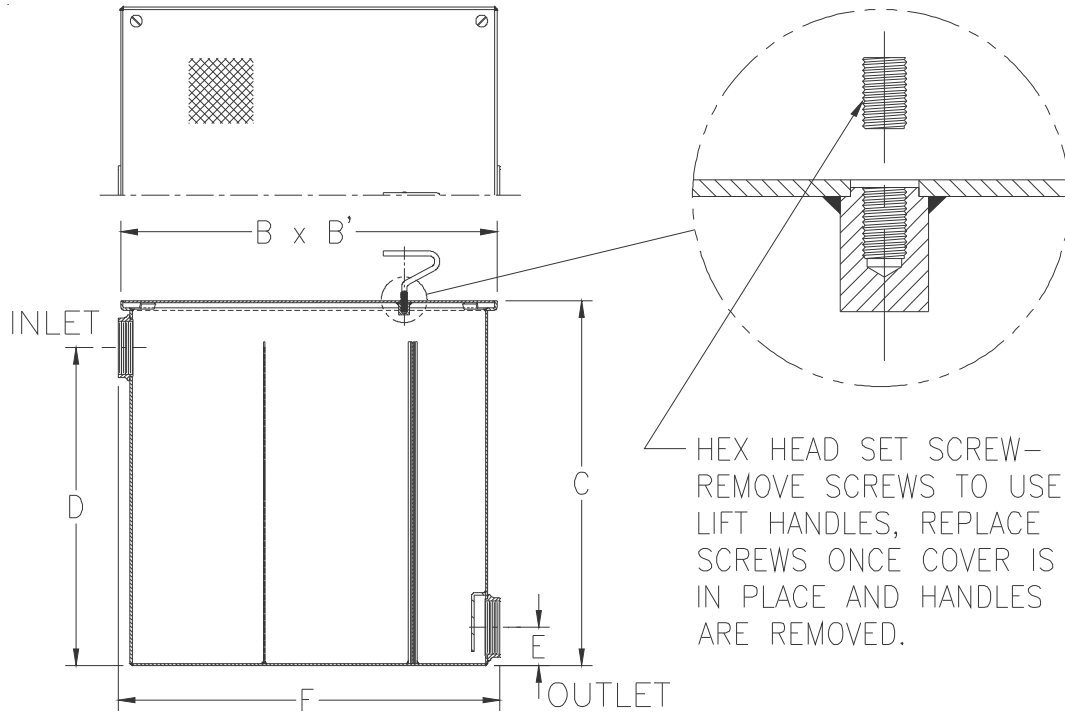


# Z1185 LINT INTERCEPTOR

SPECIFICATION SHEET

TAG \_\_\_\_\_

Dimensional Data (inches and [ mm ]) are Subject to Manufacturing Tolerances and Change Without Notice



Size No. of Machines	Inlet/Outlet Size in [mm]	Flow Rate G.P.M. [LPM]	Approx. Wt. Lbs. [kg]	Dimensions In Inches [mm]					
				B	B'	C	D	E	F
3	2 [51]	30 [113]	93 [42]	17 [432]	17 [432]	16-1/2 [419]	13-1/2 [343]	3-1/4 [82]	17-1/4 [438]
7	3 [76]	70 [265]	155 [70]	25 [635]	25 [635]	20 [508]	15-3/4 [400]	3-1/4 [82]	25-1/2 [648]
10	4 [102]	100 [378]	271 [123]	33 [838]	33 [838]	28 [711]	25 [635]	4 [102]	34 [864]
20	4 [102]	200 [756]	404 [183]	40 [1016]	40 [1016]	35 [889]	32 [813]	4 [102]	41 [1041]
30	6 [152]	300 [1134]	654 [297]	45 [1143]	45 [1143]	40 [1016]	36 [914]	5 [127]	46 [1168]
40	6 [152]	400 [1512]	723 [328]	48 [1219]	48 [1219]	43 [1092]	39 [991]	5 [127]	49 [1245]
50	6 [152]	500 [1890]	911 [414]	52 [1321]	52 [1321]	47 [1194]	43 [1092]	5 [127]	53 [1346]

**ENGINEERING SPECIFICATION: ZURN Z1185**

Acid Resistant Coated interior and exterior fabricated steel lint interceptor, non-skid secured cover with removable lift handle, aluminum lint intercepting secondary screen assembly, and permanent primary straining baffle with 3/8" [10 mm] diameter perforated holes. Regularly furnished with high inlet and low outlet. Note: size #3 and #7 covers are not furnished with a lift handle.

**OPTIONS** (Check/specify appropriate options)

**PREFIXES**

- \_\_\_\_\_ Z Acid Resistant Coated Fabricated Steel\*
- \_\_\_\_\_ ZS All Type 304 Fabricated Stainless Steel

**SUFFIXES**

- \_\_\_\_\_ -E Acid Resistant Coated interior and exterior fabricated steel extension section (Specify 'C' dimension required for recessed installation).
- \_\_\_\_\_ -RS Aluminum Screen Replacement Assembly

\* Regularly furnished unless otherwise specified.