



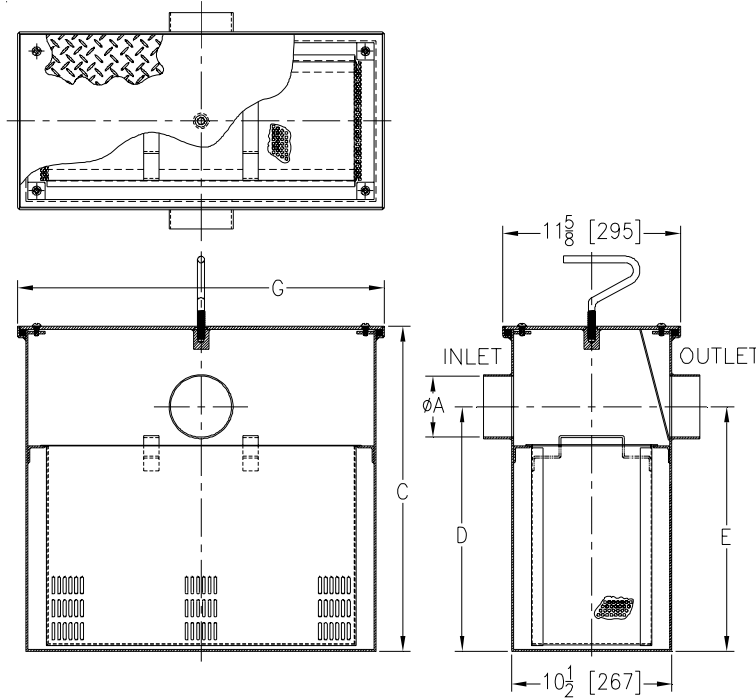
Z1183-FC

SOLIDS INTERCEPTOR W/ FLUSH COVER

SPECIFICATION SHEET

TAG _____

Dimensional Data (inches and [mm]) are Subject to Manufacturing Tolerances and Change Without Notice



Size	'A' Inlet/Outlet Size	Flow Rate G.P.M. [L]	Solids Cap. Cubic Ft. [m ³]	Dimensions In Inches		
				C	G	D/E
100	2 [51]	4 [15]	0.20 [.006]	10 [254]	11-3/4 [298]	7-1/4 [184]
200	2 [51]	7 [26]	0.29 [.008]	11-1/8 [283]	13-3/4 [349]	8-1/8 [206]
300	2 [51]	10 [38]	0.33 [.009]	11-3/4 [298]	15-7/8 [403]	8-1/4 [210]
400	3 [76]	15 [57]	0.38 [.011]	13-3/8 [340]	18-5/8 [473]	9-3/8 [238]
500	3 [76]	20 [76]	0.66 [.019]	15 [381]	19-1/8 [488]	11-3/4 [298]
600	3 [76]	25 [95]	0.79 [.022]	17 [432]	21-3/4 [552]	12-7/16 [316]
700	3 [76]	35 [132]	1.17 [.033]	18-3/4 [476]	24-3/8 [619]	14-3/16 [360]
800	3 [76]	50 [189]	1.35 [.038]	21-1/8 [546]	24-3/8 [619]	16 [406]
900	3 [76]	75 [284]	1.61 [.046]	22-3/4 [578]	24-3/8 [619]	18-1/2 [470]
1000	3 [76]	100 [379]	1.8 [.051]	27 [686]	24-3/8 [619]	23 [584]
1100	3 [76]	125 [473]	1.95 [.055]	30-1/8 [765]	24-3/8 [619]	24-1/2 [622]
1200	4 [102]	150 [568]	2.11 [.060]	30-3/4 [781]	24-3/8 [619]	25-1/4 [641]

ENGINEERING SPECIFICATION:
ZURN Z1183-FC

Large capacity acid resistant coated interior and exterior fabricated steel, or stainless steel solids interceptor, for recessed installation with screen attached to gasketed, non-skid secured cover with removable lift handle, and removable sediment basket. Size to be used with corresponding Z1170, Z1172 or Z1173 Grease Interceptors.

OPTIONS (Check/specify appropriate option)

PREFIXES

- ___ Z Acid Resistant Coated Fabricated Steel*
- ___ ZS Type 304 Fabricated Stainless Steel

SUFFIXES

- ___ -CS Custom Screens (Specify material and perforation size required)
- ___ -E Acid Resistant Coated Interior and Exterior Fabricated Steel Extension Section.
- ___ -YR Replacement Stainless Steel Bucket Assembly

*REGULARLY FURNISHED UNLESS OTHERWISE SPECIFIED

REV. D	DATE: 10/22/10	C.N. NO. 111954
DWG. NO. 83455	PRODUCT NO. Z1183-FC	