



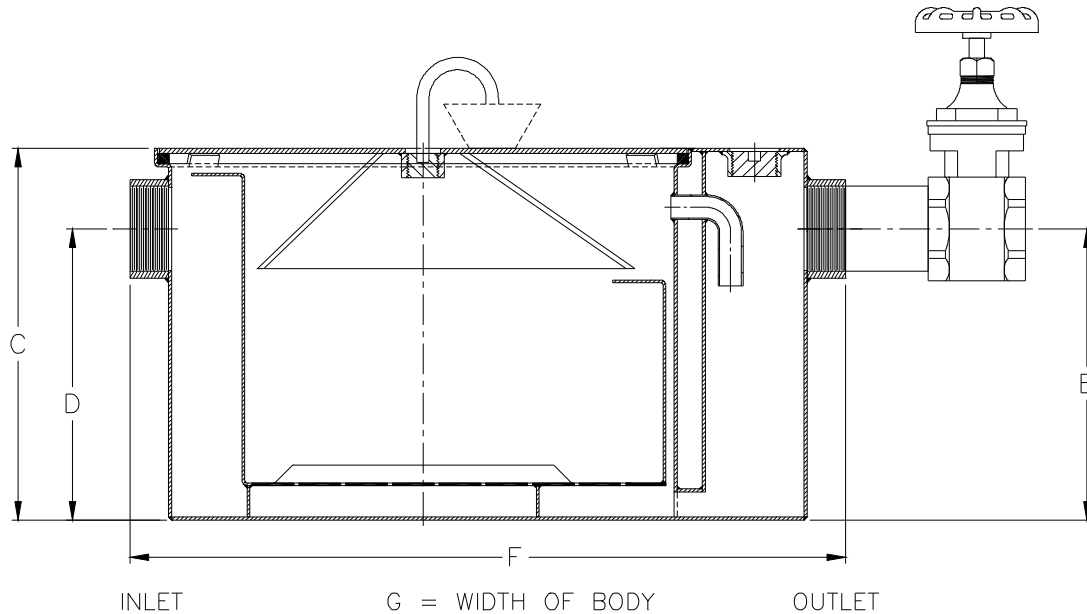
Z1173-TD

GREASE INTERCEPTOR W/ GREASE ACCUMULATING CONE & INLINE SHUTOFF VALVE

SPECIFICATION SHEET

TAG _____

Dimensional Data (inches and [mm]) are Subject to Manufacturing Tolerances and Change Without Notice



Size	Inlet/ Outlet Size*	Flow Rate G.P.M. [L]	Capacity		Approx. Wt. Lbs. [kg]	Dimensions in Inches			
			Water Gal. [L]	Grease Lbs. [kg]		C	D/E	F	G
200	2 [51]	7 [26]	5 [19]	14 [6]	56 [25]	11-1/4 [286]	8-1/8 [206]	21-3/4 [552]	11-7/8 [302]
300		10 [38]	6 [23]	20 [9]	70 [32]	11-3/4 [298]	8-1/4 [210]	25-1/8 [638]	14 [356]
400	3 [76]	15 [57]	10 [38]	30 [14]	87 [39]	13-3/8 [340]	9-3/8 [238]	27-1/8 [689]	16-3/4 [425]
500		20 [76]	16 [60]	40 [18]	104 [47]	15 [381]	11-3/4 [298]	30 [762]	17-1/4 [438]
600		25 [94]	21 [79]	50 [23]	129 [59]	17 [432]	12-1/2 [318]	32-1/4 [819]	19-7/8 [505]
700		35 [132]	30 [113]	70 [32]	156 [71]	18-3/4 [476]	14-1/4 [362]	34-1/8 [867]	22-1/2 [572]
800		50 [189]	40 [151]	100 [45]	186 [84]	21-1/2 [546]	16 [406]	36 [914]	24-1/2 [622]
900		75 [284]	65 [246]	150 [68]	316 [143]	22-3/4 [578]	18-1/2 [470]	36 [914]	28-5/8 [727]

ENGINEERING SPECIFICATION: ZURNZ1173-TD

Acid Resistant Coated interior and exterior fabricated steel grease interceptor, PDI rated at ____ GPM and ____ Lbs. grease capacity, with internal air relief by-pass, bronze cleanout plug and visible double wall trap seal with removable combination pressure equalizing/flow diffusing baffle and sediment tray. Gasketed non-skid secured cover with draw off port having bronze plug, grease accumulating cone, NPT to hose adaptor, 2' [610] flexible hose, hose clamp, and an in line closure valve, complete with Z1108 Flow Control Fitting. Regularly furnished inlet and outlet in high position. Note: Location of outlet from bottom of interceptor cannot be changed.

PREFIXES

____ Z Acid Resistant Coated Fabricated Steel*

SUFFIXES

- ____ -L Angle type (Z1108-L) flow control device with plunger (no additional charge).
- ____ -PW Plug wrench.
- ____ -R Acid Resistant Coated interior and exterior fabricated steel recessing receiver for recessed installation, is furnished with adjustable support brackets and gasketed non-skid secured cover with removable lift handle.
- ____ -RE Acid Resistant Coated interior and exterior fabricated steel recessing receiver, enclosed type, for recessed installation. Furnished with adjustable support brackets and gasketed non-skid secured cover with removable lift handles.

NOTE: 1. Sizes 200 thru 800 are PDI Certified.



REV. D	DATE: 12/09/11	C.N. NO. 122525
DWG. NO. 66446	PRODUCT NO. Z1173-TD	

*REGULARLY FURNISHED UNLESS OTHERWISE SPECIFIED