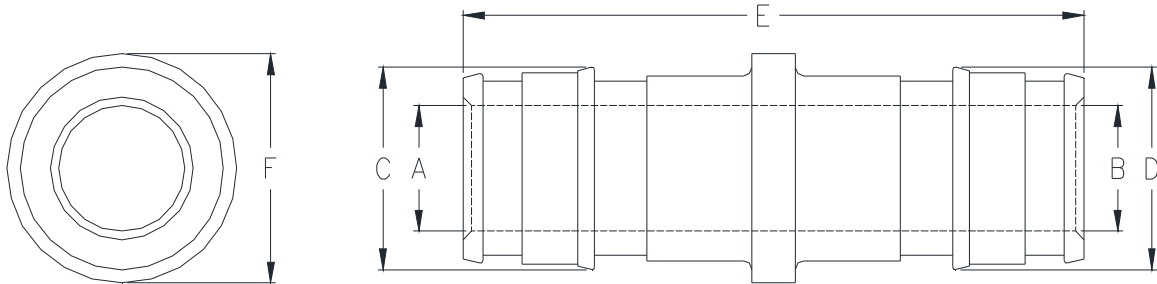


**QEC_GX****XL BRASS F1960 EXPANSION PEX COUPLING****SPECIFICATION SHEET**

TAG _____

Dimensional Data (inches and [mm]) are Subject to Manufacturing Tolerances and Change Without Notice



Part Number	XL Brass F1960 Expansion PEX Coupling Size	Dimensions in Inches [mm]					
		A	B	C	D	E	F
QEC22GX	3/8" EX PEX x 3/8" EX PEX	0.26 [7]	0.26 [7]	0.48 [12]	0.48 [12]	1.43 [36]	0.59 [15]
QEC32GX	1/2" EX PEX x 3/8" EX PEX	0.38 [10]	0.26 [7]	0.61 [16]	0.48 [12]	1.49 [38]	0.69 [18]
QEC33GX	1/2" EX PEX x 1/2" EX PEX	0.38 [10]	0.38 [10]	0.61 [16]	0.61 [16]	1.55 [39]	0.69 [18]
QEC43GX	3/4" EX PEX x 1/2" EX PEX	0.60 [15]	0.38 [10]	0.87 [22]	0.61 [16]	1.78 [45]	0.95 [24]
QEC44GX	3/4" EX PEX x 3/4" EX PEX	0.60 [15]	0.60 [15]	0.87 [22]	0.87 [22]	2.02 [51]	0.95 [24]
QEC54GX	1" EX PEX x 3/4" EX PEX	0.80 [20]	0.60 [15]	1.11 [28]	0.87 [22]	2.24 [57]	1.18 [30]
QEC55GX	1" EX PEX x 1" EX PEX	0.80 [20]	0.80 [20]	1.11 [28]	1.11 [28]	2.49 [63]	1.18 [30]
QEC64GX	1-1/4" EX PEX x 3/4" EX PEX	0.96 [24]	0.60 [15]	1.36 [34]	0.87 [22]	2.52 [64]	1.46 [37]
QEC65GX	1-1/4" EX PEX x 1" EX PEX	0.96 [24]	0.80 [20]	1.36 [34]	1.11 [28]	2.76 [70]	1.46 [37]
QEC66GX	1-1/4" EX PEX x 1-1/4" EX PEX	0.96 [24]	0.96 [24]	1.36 [34]	1.36 [34]	3.02 [77]	1.46 [37]
QEC74GX	1-1/2" EX PEX x 3/4" EX PEX	1.08 [28]	0.60 [15]	1.49 [38]	0.87 [22]	2.78 [71]	1.61 [41]
QEC75GX	1-1/2" EX PEX x 1" EX PEX	1.08 [28]	0.80 [20]	1.49 [38]	1.11 [28]	3.02 [77]	1.61 [41]
QEC76GX	1-1/2" EX PEX x 1-1/4" EX PEX	1.08 [28]	0.96 [24]	1.49 [38]	1.23 [31]	3.28 [83]	1.61 [41]
QEC77GX	1-1/2" EX PEX x 1-1/2" EX PEX	1.08 [28]	1.08 [28]	1.49 [38]	1.49 [38]	3.54 [90]	1.61 [41]
QEC85GX	2" EX PEX x 1" EX PEX	1.55 [39]	0.80 [20]	2.08 [53]	1.11 [28]	3.46 [88]	2.28 [58]
QEC86GX	2" EX PEX x 1-1/4" EX PEX	1.55 [39]	0.96 [24]	2.08 [53]	1.36 [34]	3.72 [94]	2.28 [58]
QEC87GX	2" EX PEX x 1-1/2" EX PEX	1.55 [39]	1.08 [28]	2.08 [53]	1.49 [38]	3.98 [101]	2.28 [58]
QEC88GX	2" EX PEX x 2" EX PEX	1.55 [39]	1.55 [39]	2.08 [53]	2.08 [53]	4.42 [112]	2.28 [58]

Engineering Specification: Zurn PEX® XL-Low Lead Brass F1960 Expansion PEX Coupling

The QEC_GX is used with Zurn Non-Barrier Pex tubing in potable water applications. Not for use in reverse osmosis systems or in areas with known localized aggressive water chemistries. Manufactured from EcoBrass®, C69300. These fittings, as a system with Zurn PEX® tube and Zurn PEX reinforcing rings are pressure rated at 160 PSI at 73°F, 100 PSI at 180°F, and 80 PSI at 200°F. These fittings are 3rd Party certified as complying with the following standards: NSF/ANSI Standard 61, NSF/ANSI Standard 372 (Low Lead), ASTM F1960, CSA B137.5

Accessories

___	QER3X	1/2" PEX Expansion Reinforcing Ring w/Stop
___	QER4X	3/4" PEX Expansion Reinforcing Ring w/Stop
___	QER5X	1" PEX Expansion Reinforcing Ring w/Stop
___	QER6X	1-1/4" PEX Expansion Reinforcing Ring w/Stop
___	QER7X	1-1/2" PEX Expansion Reinforcing Ring w/Stop
___	QER8X	2" PEX Expansion Reinforcing Ring w/Stop
___	QEMT345	F1960 Manual Expansion Tool Kit - 1/2" to 1"