



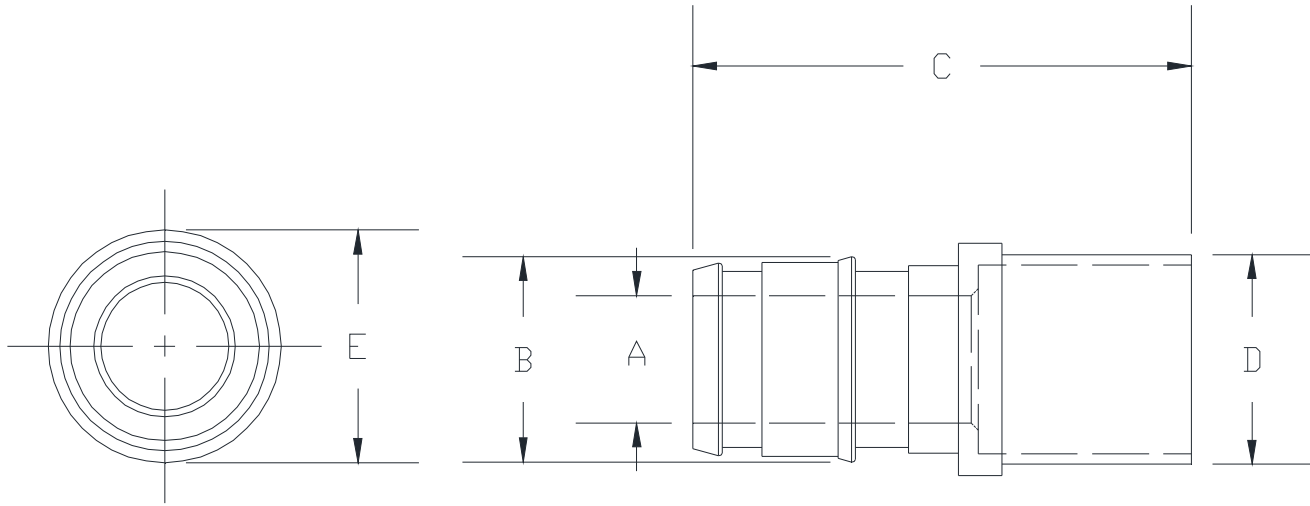
QE_GX

XL BRASS F1960 EXPANSION PEX x MALE SWEAT ADAPTER

SPECIFICATION SHEET

TAG _____

Dimensional Data (inches and [mm]) are Subject to Manufacturing Tolerances and Change Without Notice



Part Number	XL Brass F1960 Expansion PEXx Male Sweat Adapter Size	Dimensions in In [mm]				
		A	B	C	D*	E
QE650GX	1/2" EX PEXx 1/2" Male Sweat	0.38 [10]	0.61 [16]	1.38 [35]	1/2" CU MSWT	0.69 [18]
QE657GX	1/2" EX PEXx 3/4" Male Sweat	0.38 [10]	0.61 [16]	1.50 [38]	3/4" CU MSWT	0.87 [22]
QE670GX	3/4" EX PEXx 1/2" Male Sweat	0.60 [15]	0.87 [22]	1.62 [41]	1/2" CU MSWT	0.95 [24]
QE675GX	3/4" EX PEXx 3/4" Male Sweat	0.60 [15]	0.87 [22]	1.87 [48]	3/4" CU MSWT	0.95 [24]
QE677GX	3/4" EX PEXx 1" Male Sweat	0.60 [15]	0.87 [22]	1.90 [48]	1" CU MSWT	1.13 [29]
QE700GX	1" EX PEXx 1" Male Sweat	0.80 [20]	1.11 [28]	2.26 [57]	1" CU MSWT	1.18 [30]
QE712GX	1-1/4" EX PEXx 1-1/4" Male Sweat	0.96 [24]	1.36 [34]	2.57 [65]	1-1/4" CU MSWT	1.46 [37]
QE900GX	1-1/2" EX PEXx 1-1/2" Male Sweat	1.08 [28]	1.49 [38]	2.86 [73]	1-1/2" CU MSWT	1.62 [41]
QE975GX	2" EX PEXx 2" Male Sweat	1.55 [39]	2.08 [53]	3.67 [93]	2" CU MSWT	2.28 [58]

*Fittings are designed to accept Nominal copper fitting size

Engineering Specification: Zurn PEX® XL-Low Lead Brass F1960 Expansion PEX x Male Sweat Adapter

The QE__GX is used with Zurn Non-Barrier Pex tubing in potable water applications. Not for use in reverse osmosis systems or in areas with known localized aggressive water chemistries. Manufactured from EcoBrass®,C69300. These fittings, as a system with Zurn PEX® tube and Zurn PEX reinforcing rings are pressure rated at 160 PSI at 73°F, 100 PSI at 180°F, and 80 PSI at 200°F. These fittings are 3rd Party certified as complying with the following standards: NSF/ANSI Standard 61, NSF/ANSI Standard 372 (Low Lead), ASTM F1960, CSA B137.5

Accessories

- ___ QER3X 1/2" PEX Expansion Reinforcing Ring w/Stop
- ___ QER4X 3/4" PEX Expansion Reinforcing Ring w/Stop
- ___ QER5X 1" PEX Expansion Reinforcing Ring w/Stop
- ___ QER6X 1-1/4" PEX Expansion Reinforcing Ring w/Stop
- ___ QER7X 1-1/2" PEX Expansion Reinforcing Ring w/Stop
- ___ QER8X 2" PEX Expansion Reinforcing Ring w/Stop
- ___ QEMT345 F1960 Manual Expansion Tool Kit - 1/2" to 1"