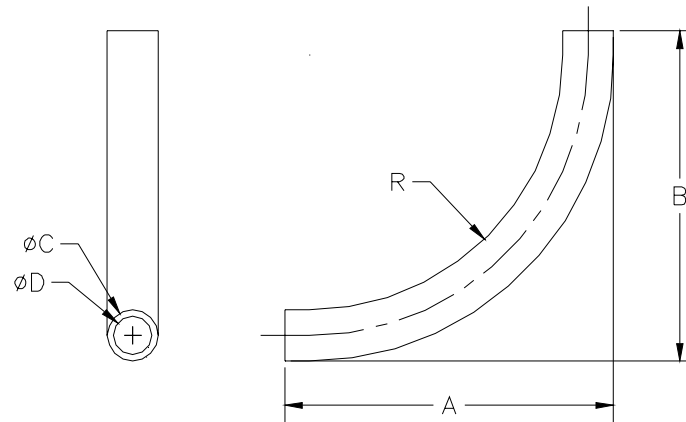




# Conduit Elbows – QHCE \_ Specification Sheet

Tag \_\_\_\_\_

Dimensional Data: Inches and [mm] are subject to manufacturing tolerances and change without notice.



Product No.	A	B	C	D	R (radius)
QHCE3	7.00 [178]	7.00 [178]	1.05 [27]	0.80 [20]	6.00 [152]
QHCE4	8.25 [210]	8.25 [210]	1.31 [33]	1.01 [26]	8.00 [203]
QHCE5	10.00 [254]	10.00 [254]	1.66 [42]	1.36 [35]	9.75 [248]

**Engineering Specification:** Zurn conduit elbows. Schedule 40 plastic elbow used to hold ZurnPEX® tubing at 90°. Protects the tubing from abrasion when transitioning out of a concrete slab.

### Accessories

— ZurnPEX® Barrier and Non-Barrier Tubing

Rev.	Date: 06/18/03	C.N. No. 91074
DWG. No. 67340		Prod. No. QHCE_