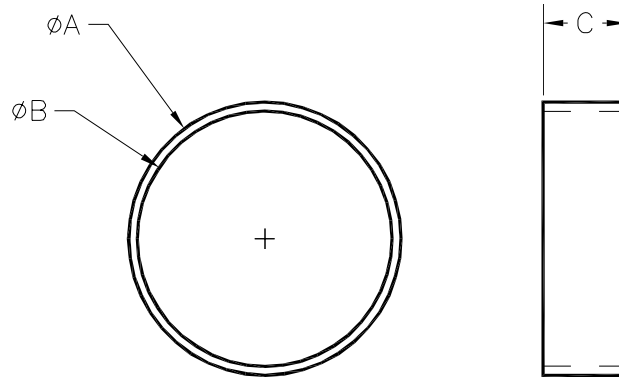




Annealed Copper Crimp Ring-QCR_X Specification Sheet Tag _____

Dimensional Data: Inches and [mm] are subject to manufacturing tolerances and change without notice.



Part Number	Description	Nom inal Size	'A'	'B'	'C'
QCR2X	3/8" Copper Crimp Ring	3/8"	0.63" [16]	0.51" [13]	0.33" [8]
QCR3X	1/2" Copper Crimp Ring	1/2"	0.75" [19]	0.64" [16]	0.33" [8]
QCRJX	5/8" Copper Crimp Ring	5/8"	0.88" [22]	0.77" [19]	0.33" [8]
QCR4X	3/4" Copper Crimp Ring	3/4"	1.00" [25]	0.89" [22]	0.33" [8]
QCR5X	1" Copper Crimp Ring	1"	1.25" [32]	1.15" [29]	0.37" [8]
QCR6X	1-1/4" Copper Crimp Ring	1-1/4"	1.50" [38]	1.39" [35]	0.55" [14]
QCR7X	1-1/2" Copper Crimp Ring	1-1/2"	1.78" [45]	1.71" [43]	0.65" [17]

Engineering Specification: ZurnPEX® annealed copper crimp ring. Used to secure ZurnPEX® tubing to Zurn® Qick/Sert 1® and QickSert CR™ fittings.

Accessories

- ___ **QCRT2CM** 3/8" Medium Crimp Tool
- ___ **QCRT3CM** 1/2" Medium Crimp Tool
- ___ **QCRT4CM** 3/4" Medium Crimp Tool
- ___ **QCRT2T** 3/8" Large Crimp Tool
- ___ **QCRT3T** 1/2" Large Crimp Tool
- ___ **QCRTJT** 5/8" Large Crimp Tool
- ___ **QCRT4T** 3/4" Large Crimp Tool
- ___ **QCRT5T** 1" Large Crimp Tool
- ___ **QCQT23N** 3/8" and 1/2" Close Quarters Crimp Tool
- ___ **QCQT34N** 1/2" and 3/4" Close Quarters Crimp Tool
- ___ **QGA234P** 3/8", 1/2", 3/4" Go/No Go Crimp Gauge
- ___ **QGA5N** 1" Go/No Go Crimp Gauge
- ___ **QGA6** 1-1/4" Go/No Go Crimp Gauge
- ___ **QGA7** 1-1/2" Go/No Go Crimp Gauge
- ___ **QGA8** 2" Go Crimp Gauge
- ___ **QCRBTKIT** 3/8", 1/2", 3/4", and 1" Battery Powered Crimp Tool Kit
- ___ **QCRBTKIT56** 1" and 1-1/4" Battery Powered Crimp Tool Kit
- ___ **QBJ6** 1-1/4" Crimp Head
- ___ **QBJ7** 1-1/2" Crimp Head
- ___ **QBJ8** 2" Crimp Head

Rev. A	Date: 6/20/08	C.N. No. 98668
Dwg. No. 67518		Prod. No. QCR_X