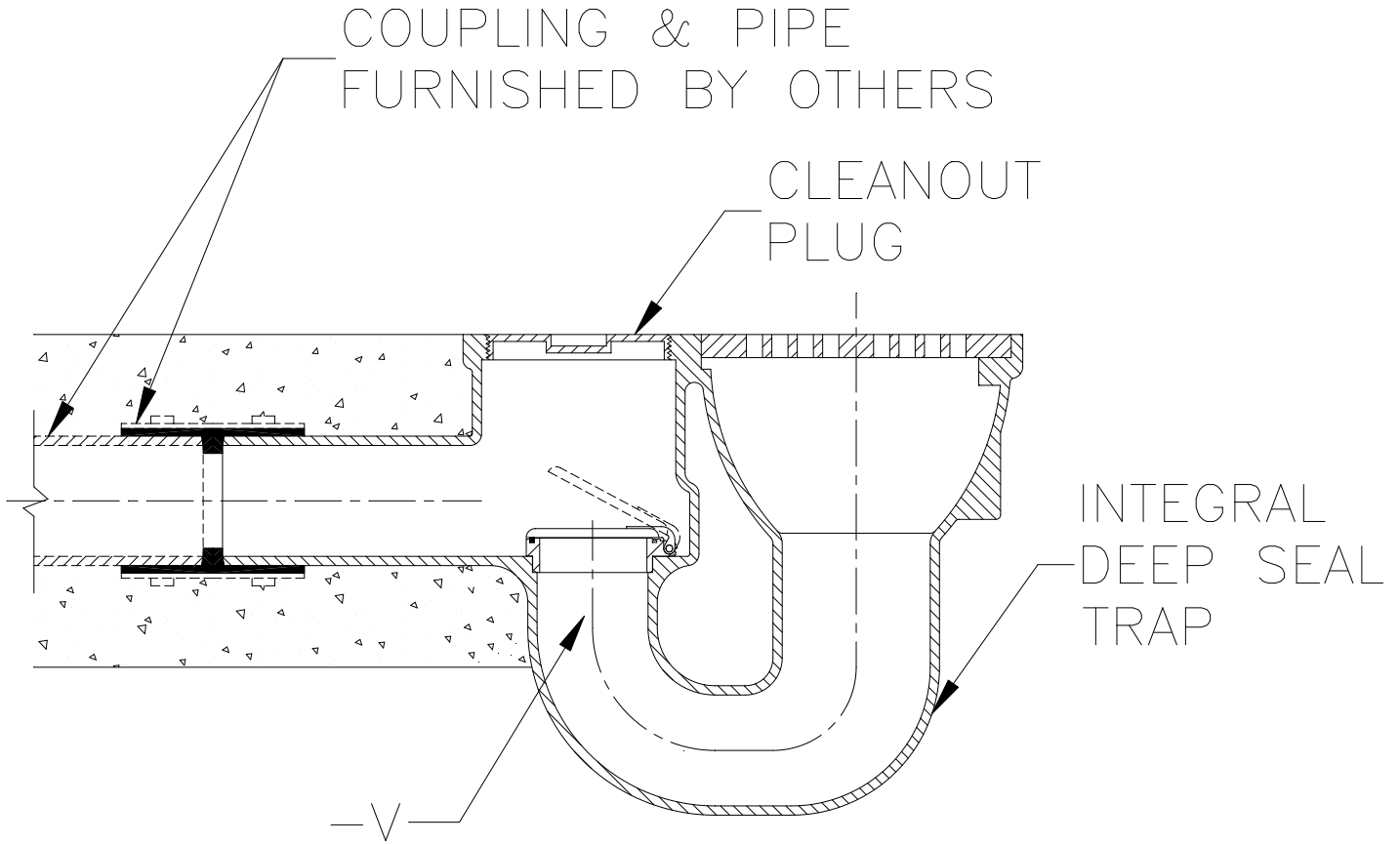




TYPICAL INSTALLATION Z730-V

9 [229] DIAMETER MEDIUM DUTY DRAIN W/ BACKWATER VALVE

Dimensional Data (inches and [mm]) are Subject to Manufacturing Tolerances and Change Without Notice



Z730-V

9 [229] DIAMETER TOP MEDIUM-DUTY DRAIN

9 [229] Diameter top drain regularly furnished with medium duty grate, double wall integral trap, side outlet and a floor level cleanout, installed in a concrete slab. Drain is illustrated with flapper type backwater valve (-V) to resist backflow.

⚠ **WARNING:** Cancer and Reproductive Harm - www.P65Warnings.ca.gov

⚠ **ADVERTENCIA:** Cáncer y daño reproductivo - www.P65Warnings.ca.gov

⚠ **AVERTISSEMENT:** Cancer et effets néfastes sur la reproduction - www.P65Warnings.ca.gov

Zurn Industries, LLC | Specification Drainage Operation
1801 Pittsburgh Avenue, Erie, PA U.S.A. 16502 · Ph. 855-663-9876, Fax 814-454-7929
In Canada | Zurn Industries Limited
3544 Nashua Drive, Mississauga, Ontario L4V 1L2 · Ph. 905-405-8272, Fax 905-405-1292
www.zurn.com

Rev. A
Date: 04/09/2018
C.N. No. 139857
Form No. FD23