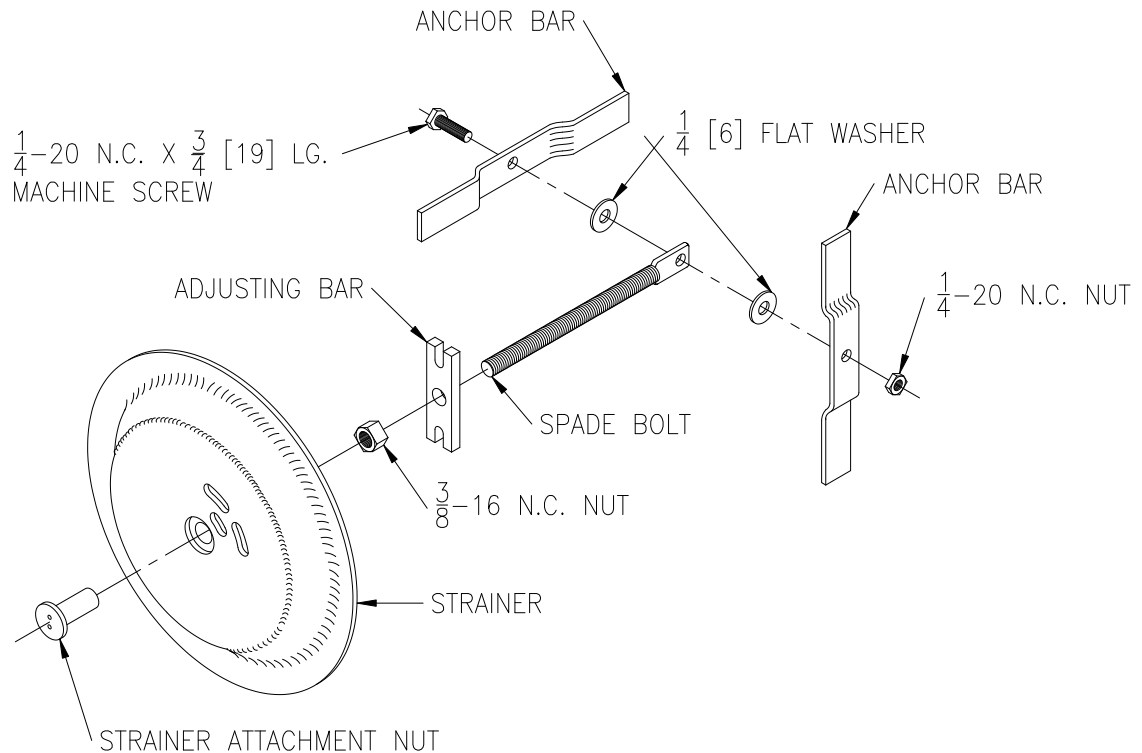




Z1471

ASSEMBLY INSTRUCTIONS FOR PIPE CLAMP HARDWARE

Dimensional data (inches and [mm]) are subject to manufacturing tolerances and change without notice.



Z1471 PIPE CLAMP HARDWARE

1. Assemble the two anchor bars (with formed offsets towards spade bolt) to spade bolt using:
 - (1) 1/4-20 NC x 3/4 [19] Long Machine Screw
 - (1) 1/4-20 NC Nut
 - (2) 1/4 [6] Flat Washers

Place a 1/4 [6] flat washer on each side of spade bolt, then place an anchor bar on each side of the 1/4 [6] flat washer (A 1/4 [6] flat washer goes between the spade bolt and anchor bar on each side). Place the 1/4-20 NC x 3/4 [19] long machine screw through the entire assembly and thread on the 1/4-20 NC nut.

Note that the 1/4-20 NC machine screw and nut holding the anchor bars (in an "x" configuration) to the spade bolt should not be tightened. The nut should be run onto the machine screw until 4 or 5 threads of the machine screw are past the nut.

2. Slide the adjusting bar onto the threaded end of the spade bolt.
3. Thread the 3/8-16 NC nut onto the threaded end of the spade bolt in front of the adjusting bar.
4. DO NOT attach the strainer and strainer attachment nut, these will be used at final installation (see page 2). The assembly is ready to be installed in pipe.

⚠ WARNING: Cancer and Reproductive Harm - www.P65Warnings.ca.gov

⚠ ADVERTENCIA: Cáncer y daño reproductivo - www.P65Warnings.ca.gov

⚠ AVERTISSEMENT: Cancer et effets néfastes sur la reproduction - www.P65Warnings.ca.gov

Zurn Industries, LLC | Specification Drainage Operation
1801 Pittsburgh Avenue, Erie, PA U.S.A. 16502 · Ph. 855-663-9876, Fax 814-454-7929
In Canada | Zurn Industries Limited
3544 Nashua Drive, Mississauga, Ontario L4V 1L2 · Ph. 905-405-8272, Fax 905-405-1292
www.zurn.com

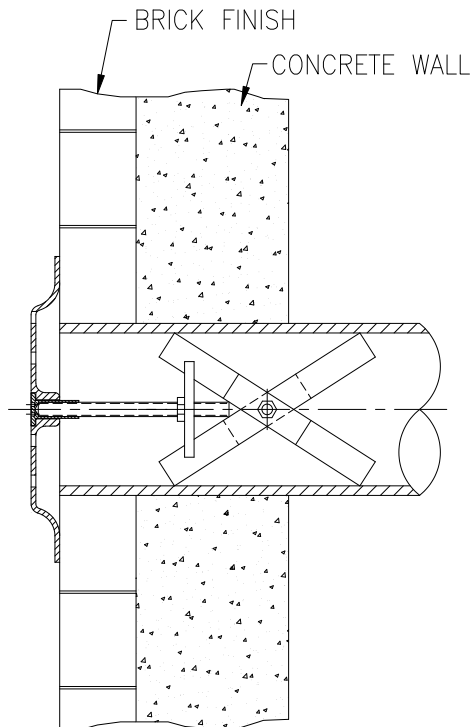
Rev. C
Date: 5/21/2018
C.N. No. 140053
Form No. CO1



Z1471

ASSEMBLY INSTRUCTIONS FOR PIPE CLAMP HARDWARE

Dimensional data (inches and [mm]) are subject to manufacturing tolerances and change without notice.



TYPICAL INSTALLATION USING
PIPE CLAMP HARDWARE

INSTALLATION INSTRUCTION FOR PIPE CLAMP TYPE AIR INLET STRAINER

1. With the exception of the strainer and the strainer attachment nut all pipe clamp hardware should be assembled as shown in the isometric assembly on page 1.

Note that the 1/4-20 NC machine screw and nut which hold the anchor bars (in an "x" configuration) to the spade bolt should not be tightened. The nut should be run onto the machine screw until 4 or 5 threads of the machine screw are past the nut.

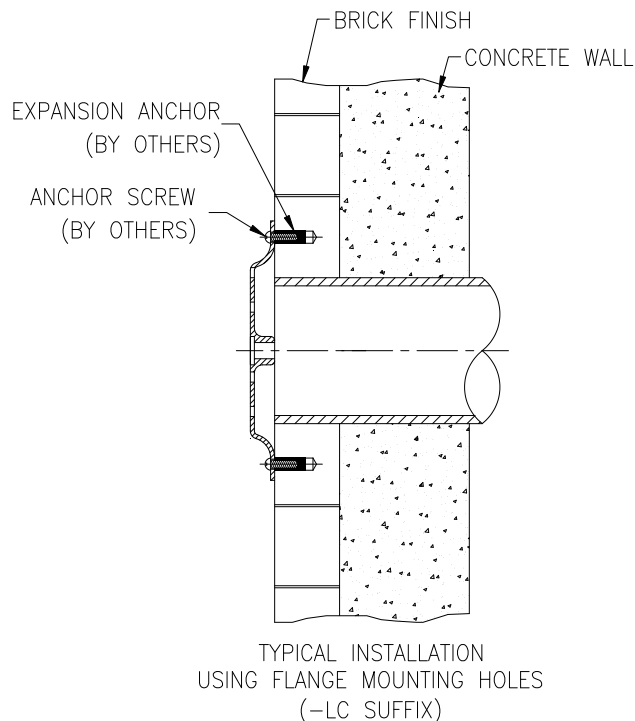
2. If necessary, back off the 3/8-16 NC nut on the spade bolt to allow the adjusting bar to move towards the end of the spade bolt, away from the anchor bars.
3. Push the legs of the anchor bars together, inward towards the spade bolt until the assembly can fit into the pipe I.D.
4. Push the assembly into the pipe until the spade bolt sticks out of the pipe (which should be flush with the finished wall) by about 1/4 [6]. Slide the adjusting bar inward between the legs of the anchor bars at the same time making sure that the anchor bars are in line with one another and as close as possible to being on the pipe centerline.
5. Run the 3/8-16 NC nut on the spade bolt up against the adjusting bar and tighten. This will force the tips of the anchor bars into the pipe I.D., tighten until well secured.
6. Slip the strainer over the end of the spade bolt and push against wall.
7. Tighten the strainer attachment nut to secure strainer in place.



Z1471

ASSEMBLY INSTRUCTIONS FOR PIPE CLAMP HARDWARE

Dimensional data (inches and [mm]) are subject to manufacturing tolerances and change without notice.



INSTALLATION INSTRUCTION FOR FLANGE MOUNTING HOLE TYPE AIR INLET STRAINER

1. Obtain appropriate expansion anchors and screws for the type of wall construction strainer will be attached to. Note that the mounting holes in the strainer are 5/16 [8] diameter.
2. Locate the strainer on the wall, over the pipe as follows:
 - 2a. Determine the O.D. of the strainer, which will be either:
8 [203] for 3 [76] and 4 [102] pipe
12 [305] for 5 [127] and 6 [152] pipe
15 [381] for 8 [203] and 10 [254] pipe
 - 2b. Determine the I.D. of the pipe, which will be either:
3 [76], 4 [102], 5 [127], 6 [152], 8 [203], or 10 [254]
 - 2c. Subtract the pipe I.D. from the strainer O.D.
Example: 12 [305] strainer O.D. - 5 [127] = 7 [178]
 - 2d. Then divide the difference by 2 [51]
Example: 7 [178] ÷ 2 [51] = 3 1/2 [89]
 - 2d. Measure from the inside wall of the pipe and place a mark on the wall at 3 1/2 [89]. Do this in 4 places approximately 90° apart from one another.
3. Measure from one of the marks across to the other and you should have the strainer O.D. dimension.
4. Position the strainer within the 4 marks which should line up with the edge of the strainer O.D.
5. Hold the strainer in position and mark the flange mounting hole locations (2 places).
6. Remove the strainer, drill holes and install expansion anchors (by others), following the anchor manufacturers instruction for hole diameter, depth and installation.
7. Reposition strainer, align mounting holes with expansion anchors and attach to wall with screws (by others).