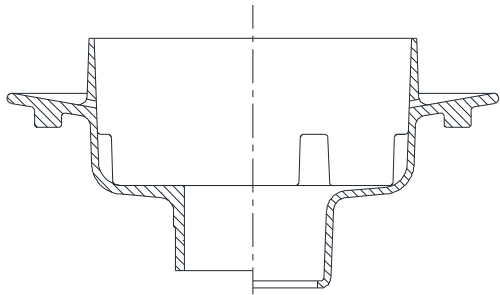




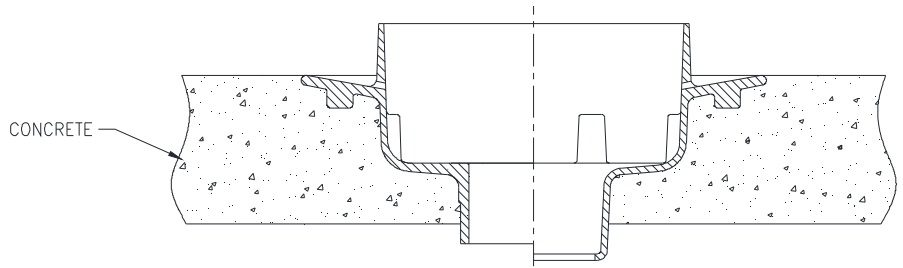
Z675

13 [330] EXTRA-HEAVY-DUTY DRAIN TYPICAL INSTALLATION

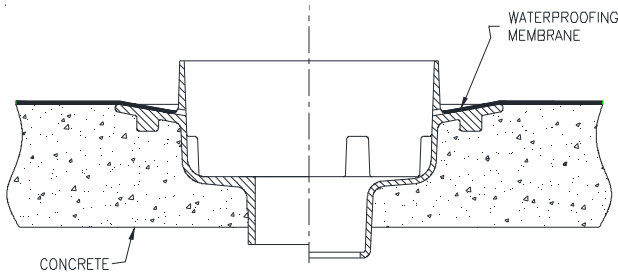
Dimensional data (inches and [mm]) are subject to manufacturing tolerances and change without notice.



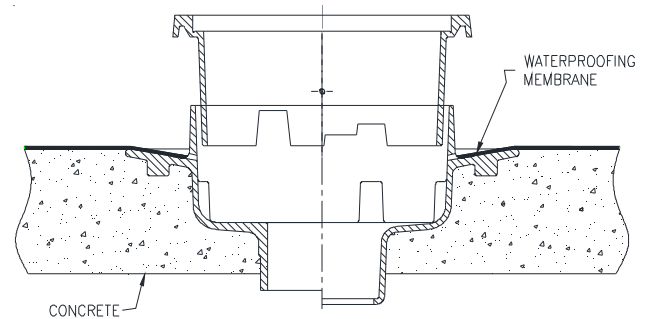
STEP 1
Make pipe connection.



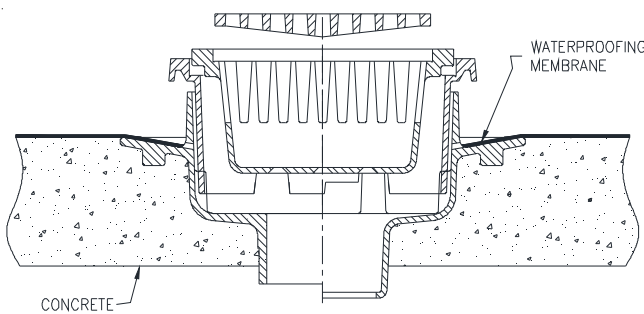
STEP 2
Pour concrete to the flange.



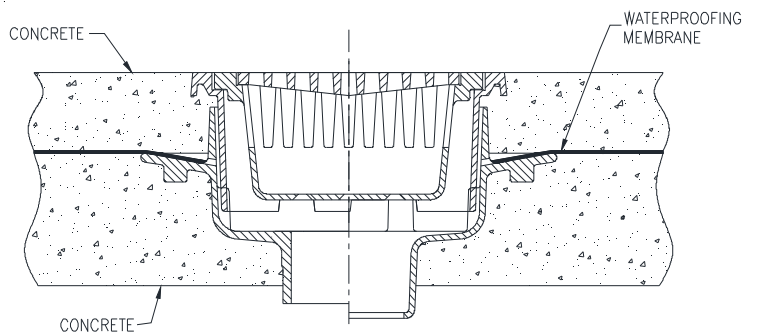
STEP 3
Install waterproof membrane & secure with clamping collar if required.



STEP 4
Adjust frame to desired position by rotating frame in 90 degree increments. Then secure frame with the set-screws.



STEP 5
Install bucket and grate.



STEP 6
Finish pour.

⚠ WARNING: Cancer and Reproductive Harm - www.P65Warnings.ca.gov
⚠ ADVERTENCIA: Cáncer y daño reproductivo - www.P65Warnings.ca.gov
⚠ AVERTISSEMENT: Cancer et effets néfastes sur la reproduction - www.P65Warnings.ca.gov

*Regularly furnished unless otherwise specified.

Zurn Industries, LLC | Specification Drainage Operation
1801 Pittsburgh Avenue, Erie, PA U.S.A. 16502 · Ph. 855-663-9876, Fax 814-454-7929
In Canada | Zurn Industries Limited
3544 Nashua Drive, Mississauga, Ontario L4V 1L2 · Ph. 905-405-8272, Fax 905-405-1292
www.zurn.com

Rev. A
Date: 6/22/2018
C.N. No. 140205
Form No. FD92