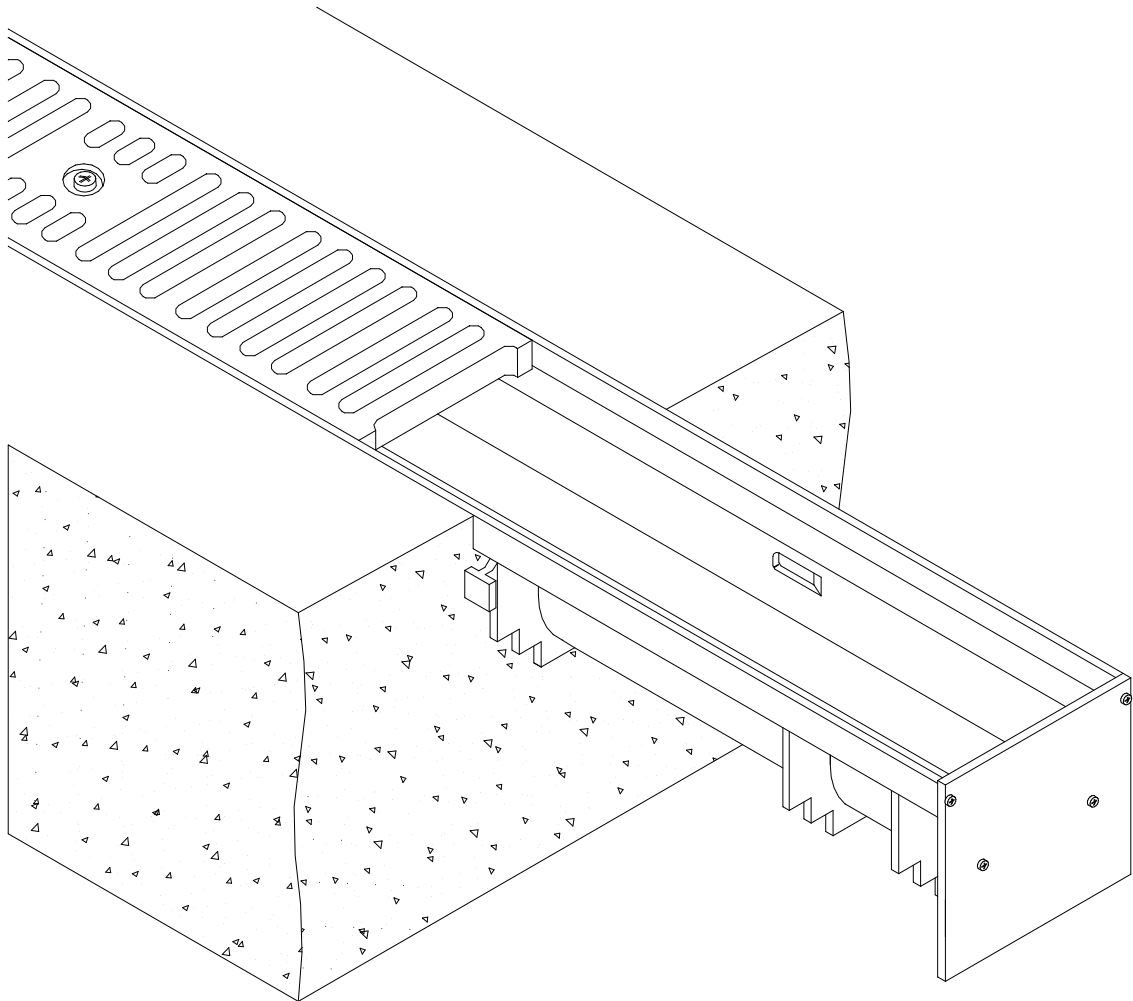




Z884

SHALLOW TRENCH DRAIN SYSTEM™ INSTALLATION INSTRUCTIONS

Dimensional Data (inches and [mm]) are Subject to Manufacturing Tolerances and Change Without Notice



- ⚠ **WARNING:** Cancer and Reproductive Harm - www.P65Warnings.ca.gov
- ⚠ **ADVERTENCIA:** Cáncer y daño reproductivo - www.P65Warnings.ca.gov
- ⚠ **AVERTISSEMENT:** Cancer et effets néfastes sur la reproduction - www.P65Warnings.ca.gov

Zurn Industries, LLC | Specification Drainage Operation
1801 Pittsburgh Avenue, Erie, PA U.S.A. 16502 · Ph. 855-663-9876, Fax 814-454-7929
In Canada | **Zurn Industries Limited**
3544 Nashua Drive, Mississauga, Ontario L4V 1L2 · Ph. 905-405-8272, Fax 905-405-1292
www.zurn.com

Rev. B
Date: 5/9/2018
C.N. No. 140014
Form No. FT628

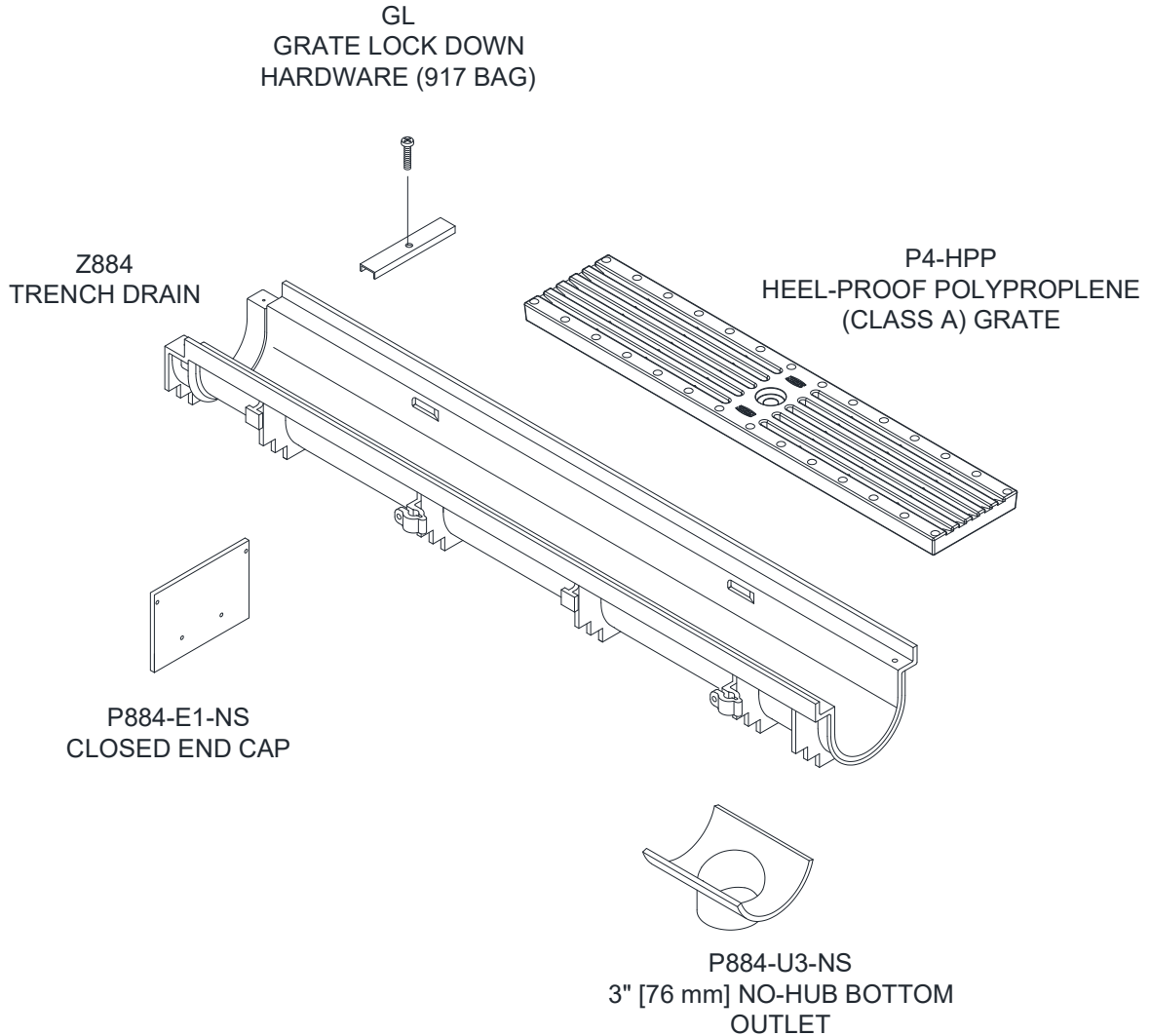


Z884

SHALLOW TRENCH DRAIN SYSTEM™ INSTALLATION INSTRUCTIONS

Dimensional Data (inches and [mm]) are Subject to Manufacturing Tolerances and Change Without Notice

ACCESSORIES



Above are some of the trench drain components typical to an installation. Double check your order to ensure that you have all components particular to your job before beginning your installation.

Contact Zurn Customer Service at 1-877-ZURN-NOW should additional material be required.

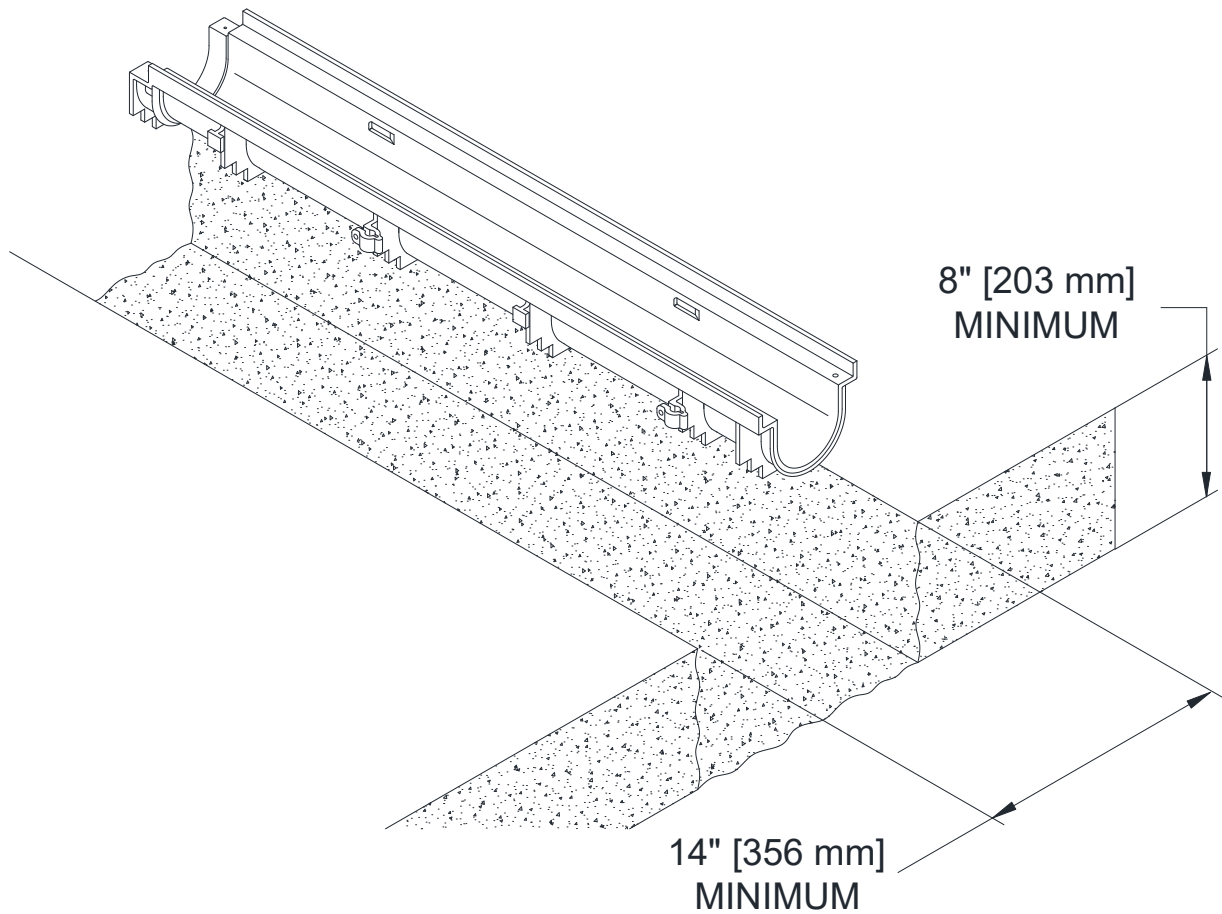


Z884

**SHALLOW TRENCH DRAIN SYSTEM™
INSTALLATION INSTRUCTIONS**

Dimensional Data (inches and [mm]) are Subject to Manufacturing Tolerances and Change Without Notice

EXCAVATION



Trench excavation must be 4" [102mm] greater than the trench depth and a minimum width of 14" [356mm]. Soft and/or shifting soil substrates may cause cracking of the concrete and consequent movement of the trench. It is critical that the concrete be poured on an adequate foundation.

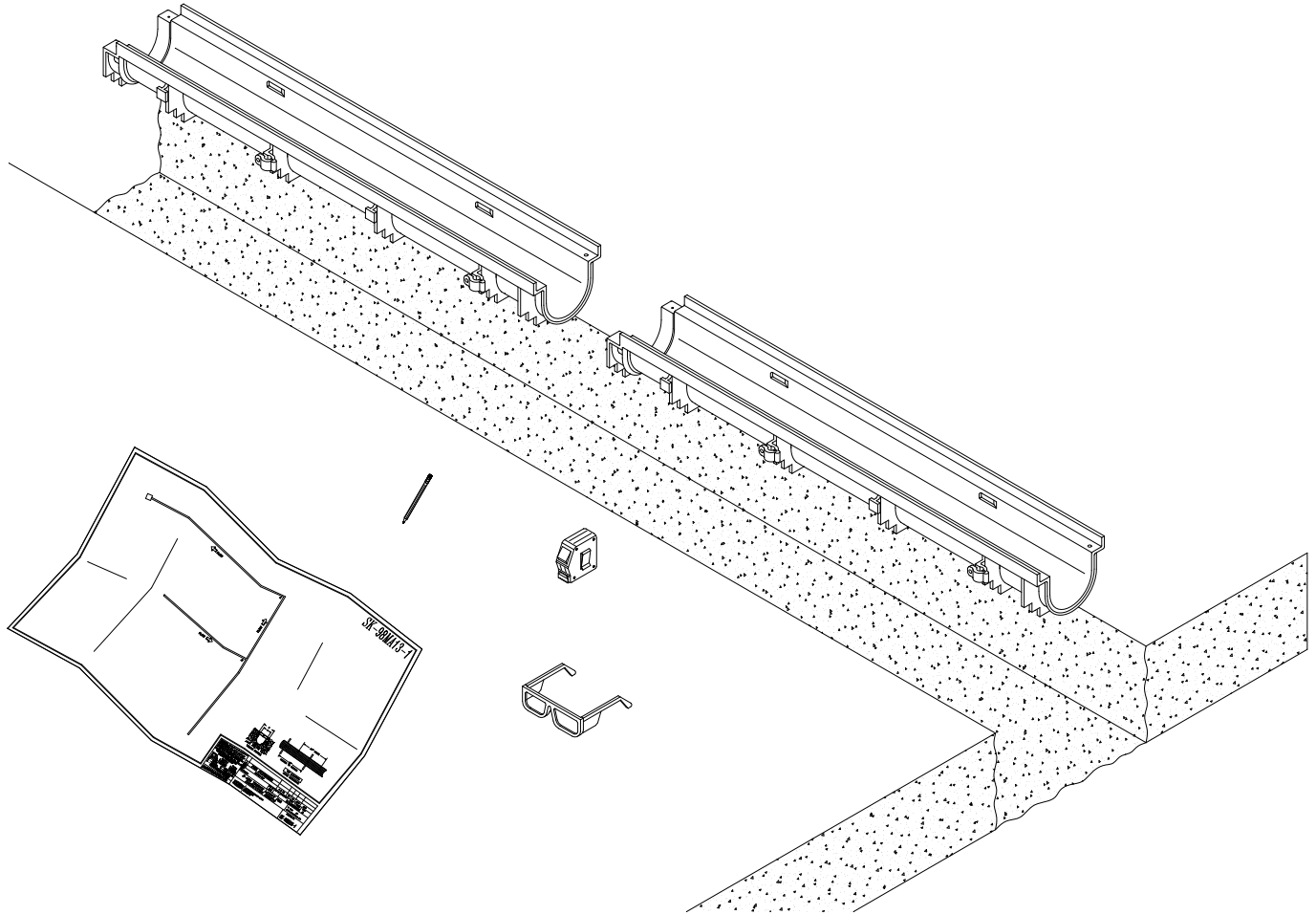


Z884

SHALLOW TRENCH DRAIN SYSTEM™ INSTALLATION INSTRUCTIONS

Dimensional Data (inches and [mm]) are Subject to Manufacturing Tolerances and Change Without Notice

OVERALL LAYOUT



Upon completion of the trench excavation, the channels should be placed in order alongside the excavation and according to the job layout. Grates are not installed at this time.

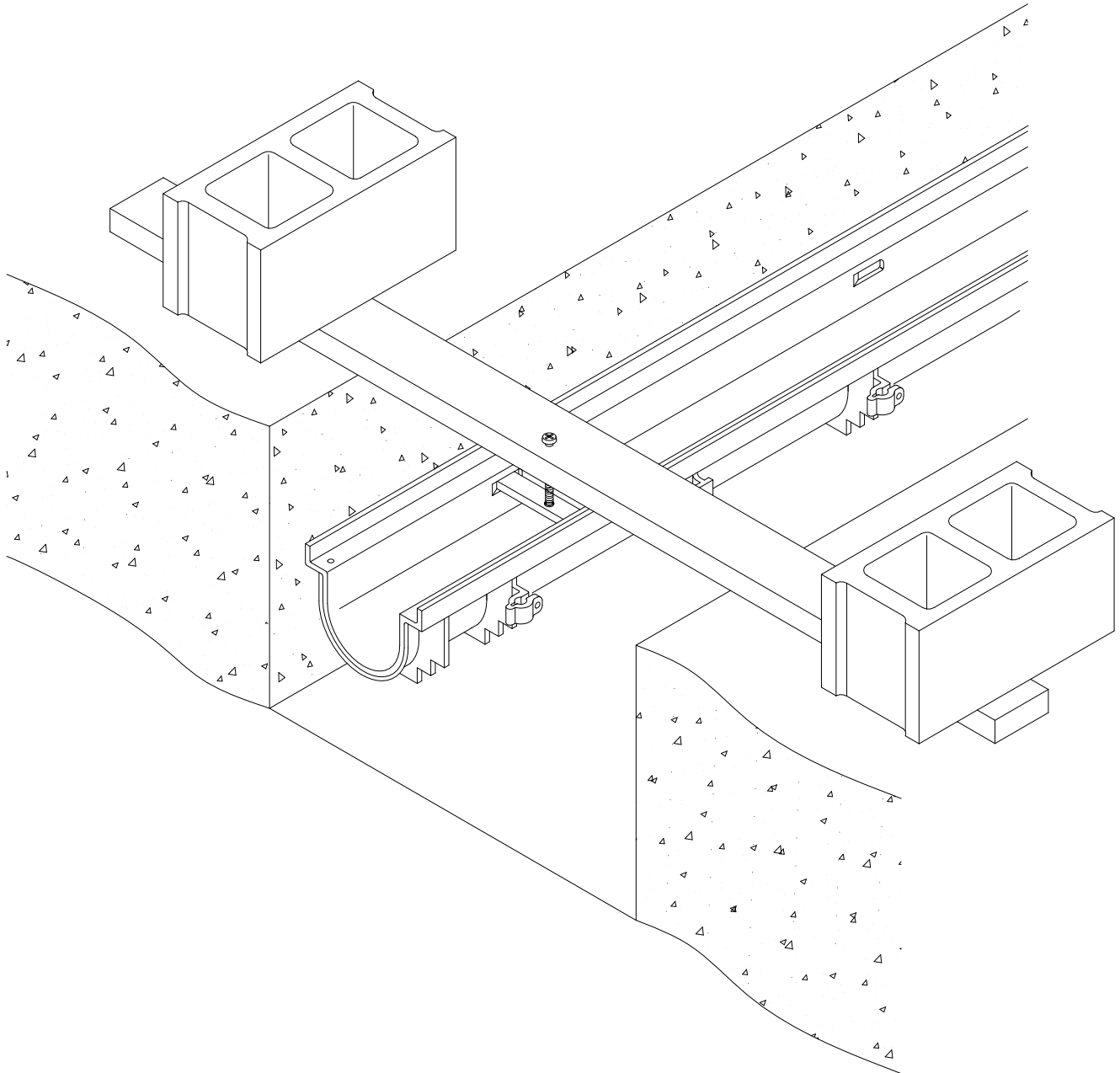


Z884

SHALLOW TRENCH DRAIN SYSTEM™ INSTALLATION INSTRUCTIONS

Dimensional Data (inches and [mm]) are Subject to Manufacturing Tolerances and Change Without Notice

SUSPENDED INSTALLATION



An alternative means of installation is to suspend the trench drain as shown. Wooden braces to hang the trench run can be attached to the drain body through the grate lock down bars as illustrated above.

Note: unless Grate Lockdown option is specified, the suspended installation method can not be utilized.

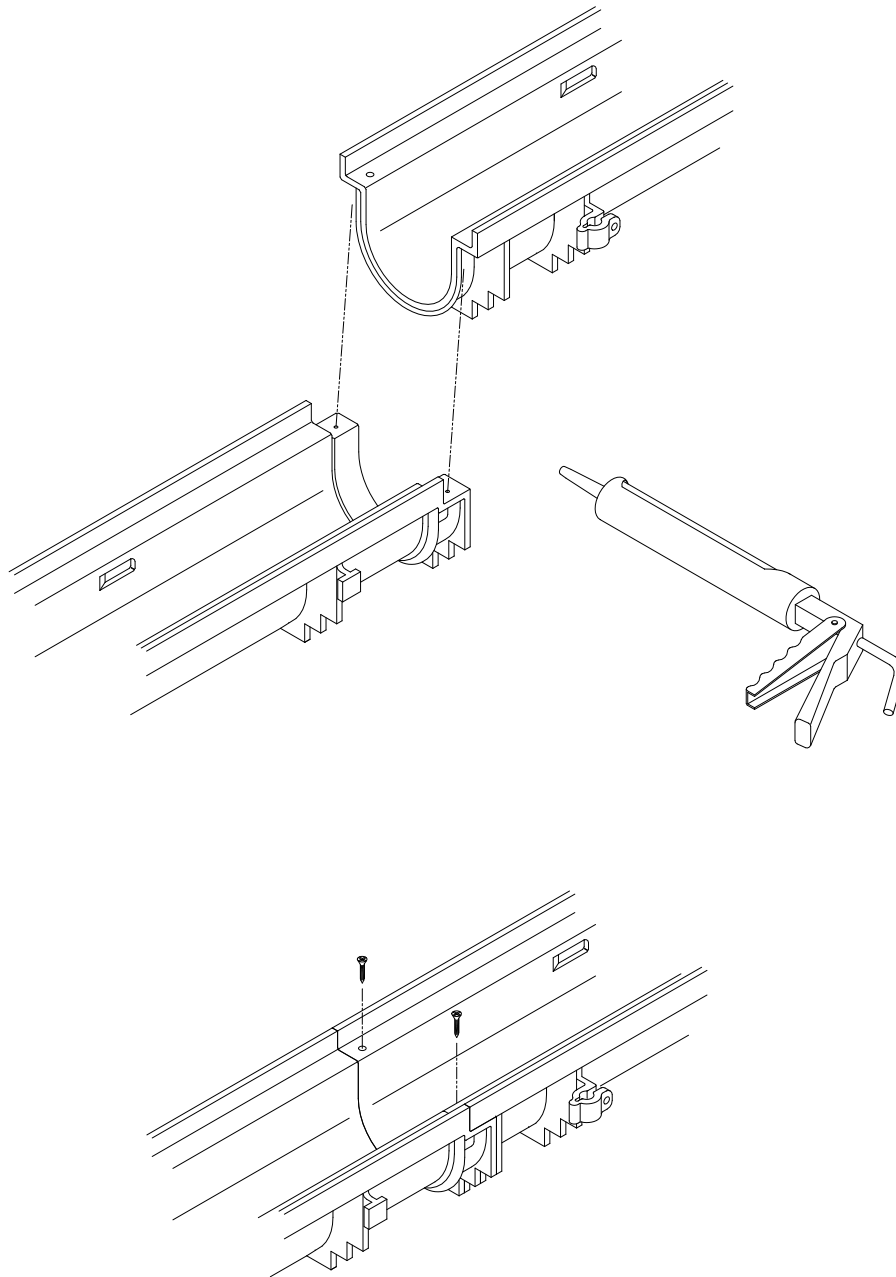


Z884

**SHALLOW TRENCH DRAIN SYSTEM™
INSTALLATION INSTRUCTIONS**

Dimensional Data (inches and [mm]) are Subject to Manufacturing Tolerances and Change Without Notice

JOINT CONNECTION



Assembling the trench run is easy using Flo-Thru's mechanical interlocking joints. Simply align the two mating ends of the trench sections and fasten with the hardware fasteners provided. A silicone caulk, or a construction adhesive, such as Liquid Nails, is recommended to be used at each joint as a sealer.



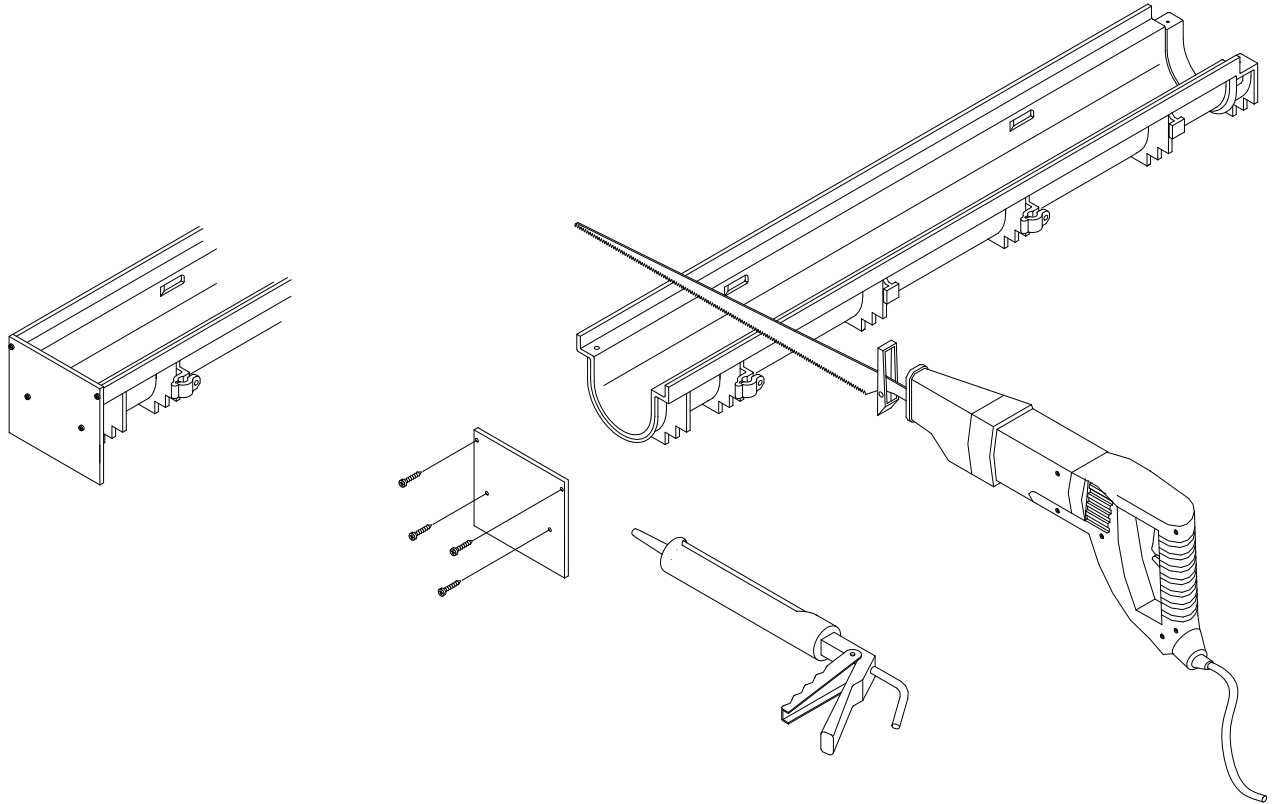
Z884

**SHALLOW TRENCH DRAIN SYSTEM™
INSTALLATION INSTRUCTIONS**

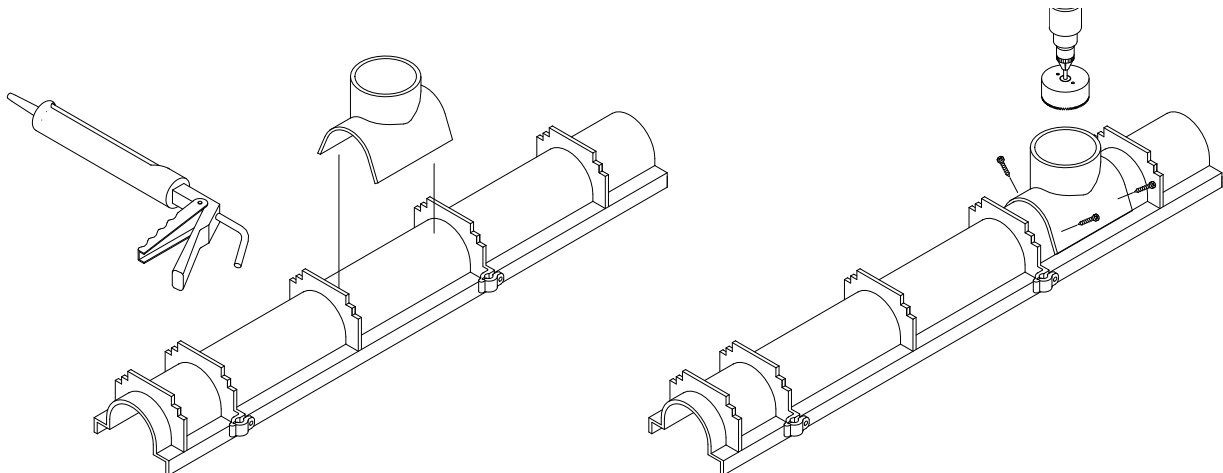
Dimensional Data (inches and [mm]) are Subject to Manufacturing Tolerances and Change Without Notice

OUTLETS & ACCESSORIES

To attach an end outlet or end cap, cut trench to desired length if necessary and attach with provided screws and a silicone caulk or a construction adhesive if desired.



A bottom outlet is attached to the bottom side of the trench drain with provided screws and a silicone caulk or a construction adhesive if desired as shown below. A hole saw can be used to cut the appropriate size hole through the bottom of the trench.



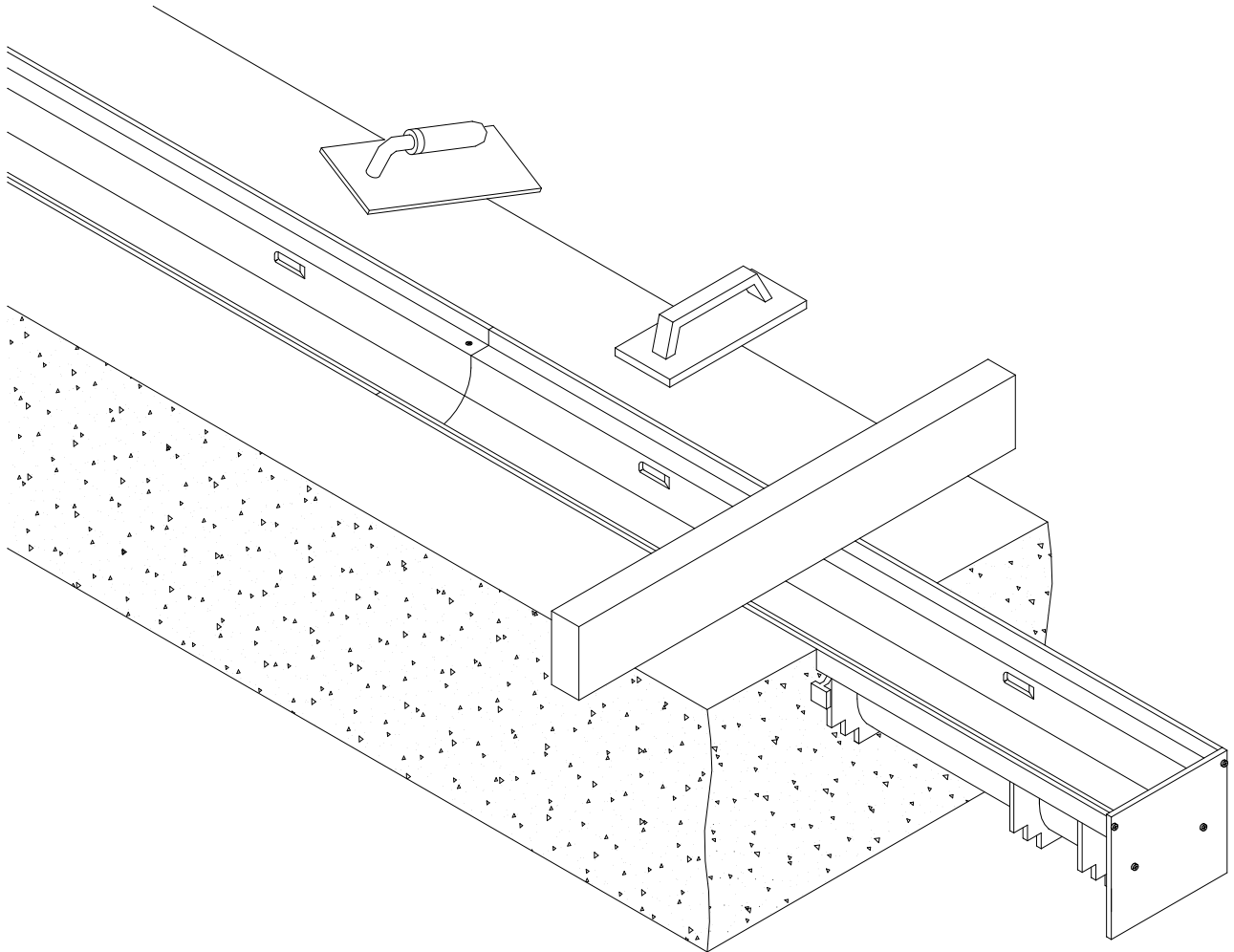


Z884

SHALLOW TRENCH DRAIN SYSTEM™ INSTALLATION INSTRUCTIONS

Dimensional Data (inches and [mm]) are Subject to Manufacturing Tolerances and Change Without Notice

POURING THE CONCRETE



It is necessary to install a 4-1/4" [108mm] wide spacer (supplied by others) in the grate section of the trench to maintain the width during the concrete pour.

Pour the concrete around the three sides of the trench drain. Be certain to adequately VIBRATE the concrete as it is being placed. Proper vibration will eliminate any unwanted voids within the concrete pour.

Finish troweling should be done to set the top edge of the trench drain about 1/16" [2mm] below the floor grade. Remember to compensate for concrete shrink that may occur during cure so that the edge of the trench drain does not protrude above the finished floor grade.



Z884

**SHALLOW TRENCH DRAIN SYSTEM™
INSTALLATION INSTRUCTIONS**

Dimensional Data (inches and [mm]) are Subject to Manufacturing Tolerances and Change Without Notice

AFTER THE POUR

After the concrete has been poured, vibrated, and given sufficient time to dry, both the grates and grate lock down bolts must be installed. The center of the grate should straddle the toggle-in lockdown bar. The exception is when the channel is cut. To place these grates, line up the lock down hole in the grate with the lock down hole in the bar. Grates with a length of under 12" [305] will not be able to be locked down. Lock down bolts can be installed using a 7/16" socket. Insert a thin screwdriver through the grate to support the right side of the lockdown bar to hold it in the slots while tightening the lockdown bolt.

