

AQUASPEC[®] FAUCETS

MODEL - Z85100-XL SERIES
SINGLE FOOT PEDAL VALVE



TECHNICAL INFORMATION

MAXIMUM PRESSURE: 125 PSI

MAXIMUM TEMPERATURE: 180°F

CARTRIDGE STYLE: ZURN SELF CLOSING FOOT PEDAL CARTRIDGE

⚠ WARNING: Cancer and Reproductive Harm - www.P65Warnings.ca.gov

⚠ ADVERTENCIA: Cáncer y daño reproductivo - www.P65Warnings.ca.gov

⚠ AVERTISSEMENT: Cancer et effets néfastes sur la reproduction - www.P65Warnings.ca.gov

INSTALLATION INSTRUCTIONS

1. BE SURE SUPPLY LINES ARE THOROUGHLY FLUSHED BEFORE INSTALLATION.
 2. REMOVE FOOT PEDAL VALVE FROM CARTON AND MOUNT TO WALL USING WOOD MOUNTING SCREWS.
 3. CONNECT OUTLET PIPING TO 3/8" NPT PORT ON VALVE.
 4. CONNECT SUPPLY PIPING TO 1/2" NPT STOPS. (ONLY WALL MOUNT UNIT PROVIDED WITH STOPS)
 5. TURN SUPPLY WATER ON AND OPERATE FOOT PEDAL CHECKING FOR LEAKS.
-

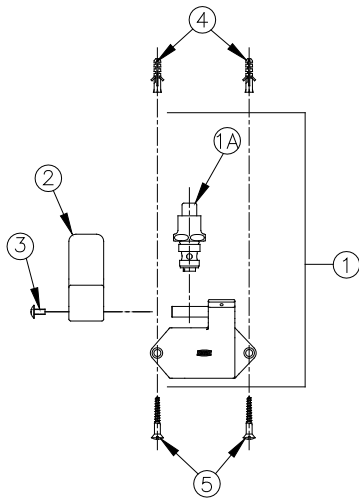
MAINTENANCE

1. YOUR ZURN AQUASPEC FOOT PEDAL VALVE HAS A HIGHLY POLISHED NICKEL CHROME PLATED FINISH. CLEAN WITH SOAP AND WATER OR A MILD CLEANER WHICH IS SAFE FOR CHROME PLATING. DO NOT USE ACIDS OR TOILET BOWL CLEANER AS THEY WILL DAMAGE THE FINISH.
 2. G67848 SELF-CLOSING VALVE ASSEMBLY (ITEM #1A OR #6A) MAINTENANCE
 - 2.1. REMOVE SELF-CLOSING VALVE ASSEMBLY (ITEM #1A OR #6A) USING ADJUSTABLE WRENCH. USE CARE TO AVOID DAMAGING THE POLISHED CHROME FINISH.
 - 2.2. RE-ASSEMBLE SELF-CLOSING VALVE TO FOOT PEDAL VALVE BODY ASSEMBLY
 - 2.3. TURN ON WATER SUPPLY AND TEST FOR FUNCTION AND LEAKS AROUND SELF-CLOSING VALVE ASSEMBLY.
-

REPLACEMENT PARTS

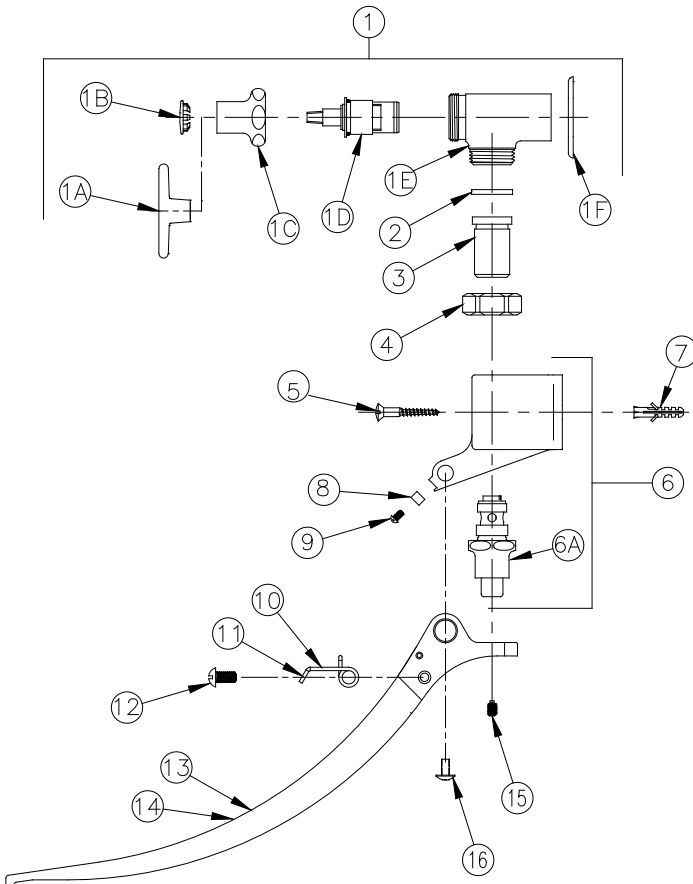
G67948 SELF CLOSING VALVE ASSEMBLY

Z85100-XL PICTURED



Item	Part Number	Description	Qty.
1	G67965	Body	1
1A	G67948	Self Closing Valve Assembly	1
2	80348001	Short Foot Pedal	1
3	92345001	10-32 Screw	1
4	62359001	Wall Anchor	2
5	61817001	#12 1-1/2" Wood Screw	2

Z85100-XL-WM PICTURED



Item	Part Number	Description	Qty.
1	G67988	Foot Pedal Stop Assembly	1
1A	61551001	Tee Handle	1
1B	59667001	Plug	1
1C	60807001	Nut	1
1D	59517006	Hot Cartridge	1
1E	300597001	Stop Body	1
1F	62334001	Escutcheon	1
2	59748001	Gasket	1
3	60751003	Adaptor	1
4	60752001	Nut	1
5	61817001	1-1/2" Flat Head Wood Screw	2
6	G67965	Body Assembly	1
6A	G67948	Self-Closing Valve Assembly	1
7	62359001	Wall Anchor	2
8	59744002	Plate	1
9	59742002	Screw	1
10	59738002	Spring (Right)	1
11	59742001	Screw	1
12	80428001	Pedal	1
13	60749001	Set Screw	1
14	92345001	10-32 Screw	1