

# Engineering Specification

Job Name \_\_\_\_\_

Contractor \_\_\_\_\_

Job Location \_\_\_\_\_

Approval \_\_\_\_\_

Engineer \_\_\_\_\_

Contractor's P.O. No. \_\_\_\_\_

Approval \_\_\_\_\_

Representative \_\_\_\_\_

Tag \_\_\_\_\_

## QT-101-L/R-TAS Pat. No. 10,895,070

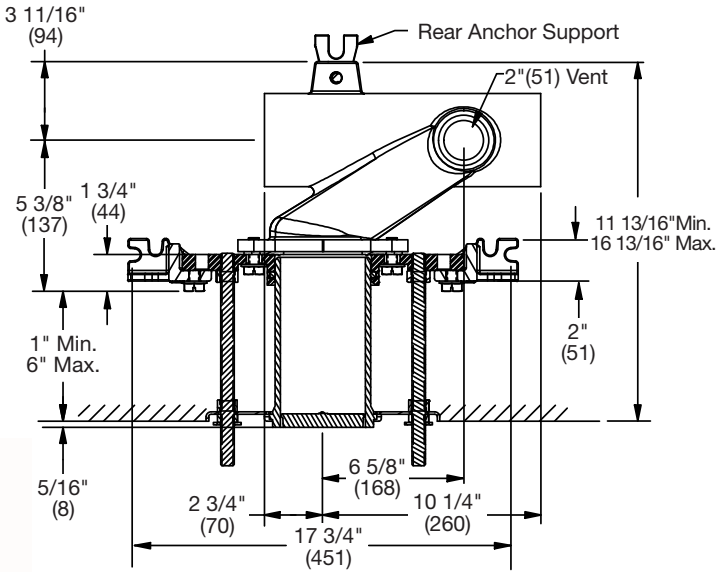
### QT QuickTurn™

### Single Horizontal Closet

### Carrier for 4" Rough-In

#### Specification

Watts QT-101-L/R-TAS single horizontal water closet carrier for 4"(102) bowl outlet rough-in with epoxy coated cast iron fitting, 4"(102) no hub waste and 2"(51) no hub vent connections, epoxy coated cast iron patented faceplate assembly, epoxy coated cast iron foot supports with incremental height markings, adjustable ABS nipple with integral test cap and neoprene bowl gasket, plated hardware and chrome cap nuts. Carrier complies with the requirements of ASME A112.6.1M up to a 500 lb. (227 kg) static load.



| Suffix     | Options Description                   |                          |
|------------|---------------------------------------|--------------------------|
| -3         | 3" No Hub Fitting                     | <input type="checkbox"/> |
| -36        | 36" Long Barrel Fitting               | <input type="checkbox"/> |
| QT-100-EXT | Aux. Support System w/Extended Nipple | <input type="checkbox"/> |
| -HS        | Hub & Spigot Connections              | <input type="checkbox"/> |
| -M1        | ABS 24" Extended Nipple               | <input type="checkbox"/> |



QT-101-L-TAS Shown

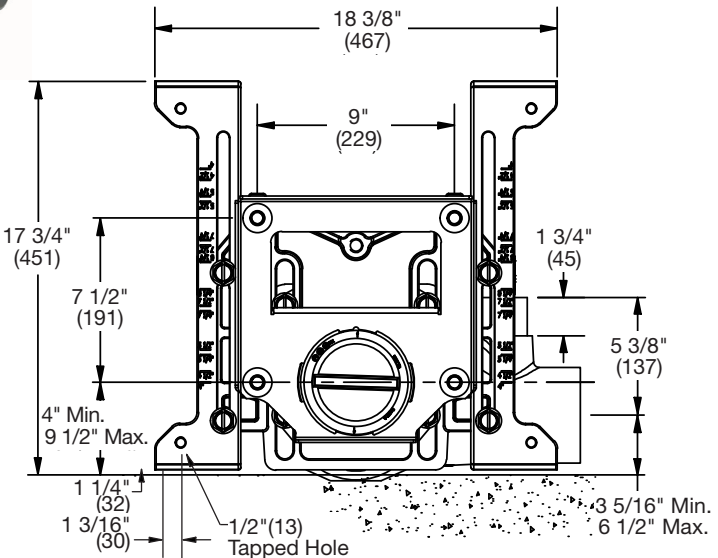
#### NOTICE

Anchor legs to concrete floor with minimum 1/2"(13) anchor bolts (by others).

Carrier feet require one 1/2"(13) anchor bolt per foot.

#### NOTICE

The information contained herein is not intended to replace the full product installation and safety information available or the experience of a trained product installer. You are required to thoroughly read all installation instructions and product safety information before beginning the installation of this product.



Watts product specifications in U.S. customary units and metric are approximate and are provided for reference only. For precise measurements, please contact Watts Technical Service. Watts reserves the right to change or modify product design, construction, specifications, or materials without prior notice and without incurring any obligation to make such changes and modifications on Watts products previously or subsequently sold.



USA: T: (800) 338-2581 • F: (828) 248-3929 • Watts.com  
Canada: T: (888) 208-8927 • F: (905) 481-2316 • Watts.ca  
Latin America: T: (52) 55-4122-0138 • Watts.com