

WATERWORKS

HIGHGATE

Highgate Pair of 3" Wall Unions

HGUN14



SHOWN IN HIGHGATE WALL MOUNTED EXPOSED TUB FILLER WITH HANDSHOWER AND METAL CROSS HANDLES| HGXT20

TECHNICAL DETAILS

Fittings Hole Diameter: 1 3/8"
Depth / Width: 3"
Height: 2 3/8"
Inlet Connection Size: 3/4"
Inlet Connection Type: Male NPT
Length: 2 3/8"
Outlet Connection Size: 3/4"
Outlet Connection Type: Male Straight Threads
Primary Material: Brass
Suggested Application: Bath

INSPIRATION

Our take on old English style: simple, functional shapes, detailed with white porcelain indices and hexagonal accents for a timeless feel.

CODES & STANDARDS

Code # HGTU14: ASME A112.18.1 / CSA B125.1, IAPMO, State of MA

PRODUCT FEATURES

Brass material is used for all trim and valve component parts.

The manufacturing process encompasses casting, turning, hand-fitting and hand polishing.

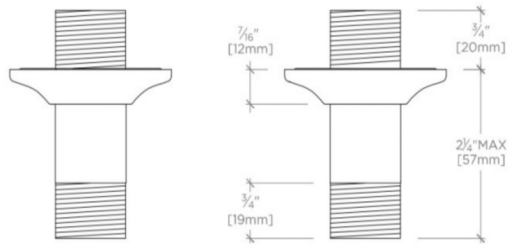
A comprehensive product line of fittings options for the lavatory, shower, and bathtub.



HIGHGATE

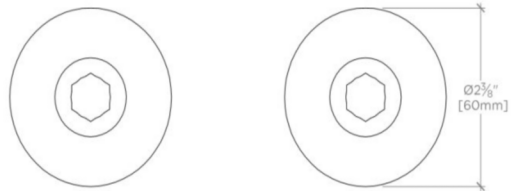
Highgate Pair of 3" Wall Unions

HGUN14



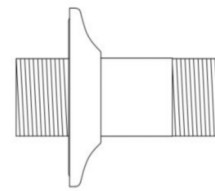
TOP VIEW

SCALE: 6"=1'-0"



FRONT VIEW

SCALE: 6"=1'-0"



SIDE VIEW

SCALE: 6"=1'-0"