



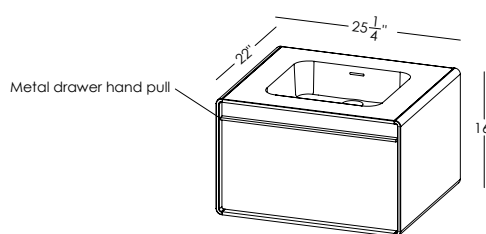
Déco

Vanity **DCO 24WM** – Wall-mount – 1 Drawer – 24" length

inch 22 depth x 25 1/4 length x 17 height mm 559 x 641 x 432

Features

- Hand pull in solid stainless steel
- All natural wood veneer
- AWI rated level 5 marine grade finish for moisture resistance and durability (industry's highest finishing class)
- Finished interior drawers
- Slow closing ball bearing glides
- Special wall preparation recommendations the distance between studs should not exceed 16". Each stud should be reinforced vertically by 2"x 3" wooden studs and horizontally with 2"x 6" wooden studs at a height of 30" all along the width of the vanity.



Finishes and colors

- oak - natural / wenge / white / black / stone harbour grey coffee bean / smoked
- walnut - natural no calico / chocolate
- matte lacquer - white / black / stone harbour grey
- premium - mozambique / torried eucalyptus
- stainless steel - brushed / satin brass / matte black

Drawer configuration



Horseshoe

Integrated countertop possibility sold separately



VDCOXS 24

WETSTYLE cannot be held responsible for any technical errors and reserves the right to make revisions without notice.

Approximate measurement. The manufacturer accept 1/4" (6.35mm) variance.

www.WETSTYLE.COM - Montreal - Canada
Tel. 1 888.536.9001 - service@wetstyle.com

WET
STYLE

Finish configurator for DCO 24WM vanity

DCO24WM-

How to build a code:

DCO24WM-	DRAWER FACADE		EXTERIOR		METAL FINISH
Déco 24* Wall-Mounted	W or L	Color code	W or L	Color code	Metal code

Use following tables to ensure your finish combination is possible

1 AVAILABLE CONFIGURATIONS (EX: DCO24WM-W11L21-MB)

CONFIGURATION	DRAWER FACADE	EXTERIOR	NEXT STEP
WL	Wood (W)	Lacquer (L)	Go to 2.1
WW	Wood (W)	Wood (W)	Go to 2.2
LL	Lacquer (L)	Lacquer (L)	Go to 2.3

2 BASE CODE (EX: DCO24WM-W11L21-MB)

2.1 WL CONFIGURATIONS

DRAWER FACADE	EXTERIOR	CODE FOR WL CONFIG
Oak Natural (1)	White matte (21)	DCO24WM-W1L21
Oak Wenge (2)	White matte (21)	DCO24WM-W2L21
Oak White (5)	White matte (21)	DCO24WM-W5L21
Oak Black (31)	White matte (21)	DCO24WM-W31L21
Oak St. Har. Grey (36)	White matte (21)	DCO24WM-W36L21
Oak Coffee bean (37)	White matte (21)	DCO24WM-W37L21
Oak Smoked (38)	White matte (21)	DCO24WM-W38L21
Walnut Natural (11)	White matte (21)	DCO24WM-W11L21
Walnut Nat. No Calico (12)	White matte (21)	DCO24WM-W12L21
Walnut Chocolate (16)	White matte (21)	DCO24WM-W16L21
Torrified Eucalyptus* (81)	White matte (21)	DCO24WM-W81L21
Mozambique* (82)	White matte (21)	DCO24WM-W82L21

2.2 WW CONFIGURATION

DRAWER FACADE + EXTERIOR	CODE FOR WW CONFIG
Oak Natural (1)	DCO24WM-W1W1
Oak Wenge (2)	DCO24WM-W2W2
Oak White (5)	DCO24WM-W5W5
Oak Black (31)	DCO24WM-W31W31
Oak St. Har. Grey (36)	DCO24WM-W36W36
Oak Coffee bean (37)	DCO24WM-W37W37
Oak Smoked (38)	DCO24WM-W38W38
Walnut Natural (11)	DCO24WM-W11W11
Walnut Natural No Calico (12)	DCO24WM-W12W12
Walnut Chocolate (16)	DCO24WM-W16W16
Torrified Eucalyptus* (81)	n/a
Mozambique* (82)	n/a

2.3 LL CONFIGURATION

DRAWER FACADE	EXTERIOR	CODE FOR LL CONFIG
White (21)	White (21)	DCO24WM-L21L21
White (21)	Black (29)	DCO24WM-L21L29
White (21)	St. Har. Grey (28)	DCO24WM-L21L28
Black (29)	Black (29)	DCO24WM-L29L29
Black (29)	White (21)	DCO24WM-L29L21
St. Har. Grey (28)	St. Har. Grey (28)	DCO24WM-L28L28
St. Har. Grey (28)	White (21)	DCO24WM-L28L21

3 SELECT METAL FINISH (EX: DCO24WM-W11L21-MB)

For legs and drawer hand pull. Made of stainless steel
Add metal code at the end of the base code

ADD TO CODE	FINISH
-MB	Matte black powder coated
-SB	Satin brass PVD
-BR	Brushed steel

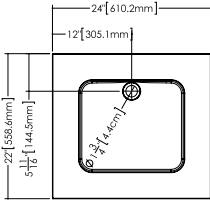


Déco

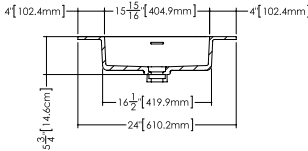
Compatible integrated countertop for **DCO 24WM** vanity

Lavatory **VDCOXS 24**

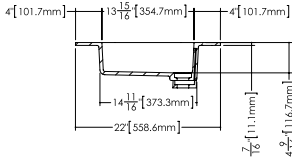
inch 24 1/8 x 22 1/16 x 7/16 mm 612 x 561 x 11



Top view



Front view



Profile view

WETSTYLE cannot be held responsible for any technical errors and reserves the right to make revisions without notice.
 Approximate measurement. The manufacturer accept 1/4" (6.35mm) variance.



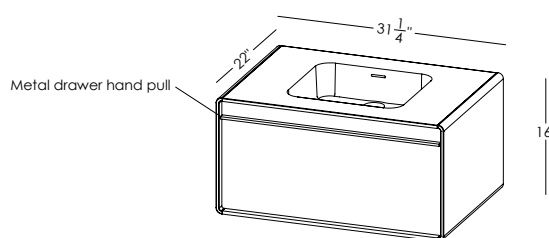
Déco

Vanity DCO 30WM – Wall-mount – 1 Drawer – 30" length

inch 22 depth x 31 1/4 length x 17 height mm 559 x 805 x 432

Features

- Hand pull in solid stainless steel
- All natural wood veneer
- AWI rated level 5 marine grade finish for moisture resistance and durability (industry's highest finishing class)
- Finished interior drawers
- Slow closing ball bearing glides
- Special wall preparation recommendations
the distance between studs should not exceed 16". Each stud should be reinforced vertically by 2"x 3" wooden studs and horizontally with 2"x 6" wooden studs at a height of 30" all along the width of the vanity.



Finishes and colors

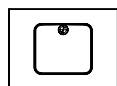
- oak - natural/wenge/white/black/stone harbour grey coffee bean/smoked
- walnut - natural no calico/chocolate
- matte lacquer - white/black/stone harbour grey
- premium - mozambique/torrified eucalyptus
- stainless steel - brushed/satin brass/matte black

Drawer configuration



Horseshoe

Integrated countertop possibility sold separately



VDCOXS 30

WETSTYLE cannot be held responsible for any technical errors and reserves the right to make revisions without notice.

Approximate measurement. The manufacturer accept 1/4" (6.35mm) variance.

www.WETSTYLE.COM - Montreal - Canada
Tel. 1 888.536.9001 - service@wetstyle.com

WET
STYLE

Finish configurator for DCO 30WM vanity

DCO30WM-

How to build a code:

DCO30WM-	DRAWER FACADE		EXTERIOR		METAL FINISH
Déco 30* Wall-Mounted	W or L	Color code	W or L	Color code	Metal code

Use following tables to ensure your finish combination is possible

1 AVAILABLE CONFIGURATIONS (EX: DCO30WM-W11L21-MB)

CONFIGURATION	DRAWER FACADE	EXTERIOR	NEXT STEP
WL	Wood (W)	Lacquer (L)	Go to 2.1
WW	Wood (W)	Wood (W)	Go to 2.2
LL	Lacquer (L)	Lacquer (L)	Go to 2.3

2 BASE CODE (EX: DCO30WM-W11L21-MB)

2.1 WL CONFIGURATIONS

DRAWER FACADE	EXTERIOR	CODE FOR WL CONFIG
Oak Natural (1)	White matte (21)	DCO30WM-W1L21
Oak Wenge (2)	White matte (21)	DCO30WM-W2L21
Oak White (5)	White matte (21)	DCO30WM-W5L21
Oak Black (31)	White matte (21)	DCO30WM-W31L21
Oak St. Har. Grey (36)	White matte (21)	DCO30WM-W36L21
Oak Coffee bean (37)	White matte (21)	DCO30WM-W37L21
Oak Smoked (38)	White matte (21)	DCO30WM-W38L21
Walnut Natural (11)	White matte (21)	DCO30WM-W11L21
Walnut Nat. No Calico (12)	White matte (21)	DCO30WM-W12L21
Walnut Chocolate (16)	White matte (21)	DCO30WM-W16L21
Torrified Eucalyptus* (81)	White matte (21)	DCO30WM-W81L21
Mozambique* (82)	White matte (21)	DCO30WM-W82L21

2.2 WW CONFIGURATION

DRAWER FACADE + EXTERIOR	CODE FOR WW CONFIG
Oak Natural (1)	DCO30WM-W1W1
Oak Wenge (2)	DCO30WM-W2W2
Oak White (5)	DCO30WM-W5W5
Oak Black (31)	DCO30WM-W31W31
Oak St. Har. Grey (36)	DCO30WM-W36W36
Oak Coffee bean (37)	DCO30WM-W37W37
Oak Smoked (38)	DCO30WM-W38W38
Walnut Natural (11)	DCO30WM-W11W11
Walnut Natural No Calico (12)	DCO30WM-W12W12
Walnut Chocolate (16)	DCO30WM-W16W16
Torrified Eucalyptus* (81)	n/a
Mozambique* (82)	n/a

2.3 LL CONFIGURATION

DRAWER FACADE	EXTERIOR	CODE FOR LL CONFIG
White (21)	White (21)	DCO30WM-L21L21
White (21)	Black (29)	DCO30WM-L21L29
White (21)	St. Har. Grey (28)	DCO30WM-L21L28
Black (29)	Black (29)	DCO30WM-L29L29
Black (29)	White (21)	DCO30WM-L29L21
St. Har. Grey (28)	St. Har. Grey (28)	DCO30WM-L28L28
St. Har. Grey (28)	White (21)	DCO30WM-L28L21

3 SELECT METAL FINISH (EX: DCO30WM-W11L21-MB)

For legs and drawer hand pull. Made of stainless steel
Add metal code at the end of the base code

ADD TO CODE	FINISH
-MB	Matte black powder coated
-SB	Satin brass PVD
-BR	Brushed steel

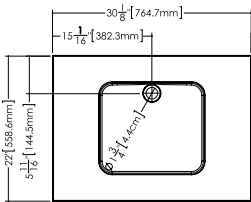


Déco

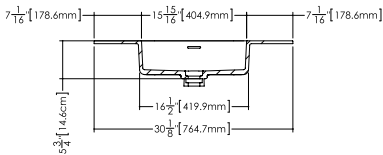
Compatible integrated countertop for **DCO 30WM** vanity

Lavatory **VDCOXS 30**

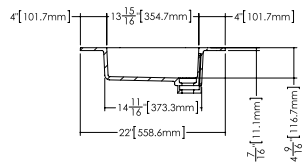
inch 30 1/8 x 22 1/16 x 7/16 mm 765 x 561 x 11



Top view



Front view



Profile view

WETSTYLE cannot be held responsible for any technical errors and reserves the right to make revisions without notice.
Approximate measurement. The manufacturer accept 1/4" (6.35mm) variance.

www.WETSTYLE.COM - Montreal - Canada
Tel. 1 888.536.9001 - service@wetstyle.com





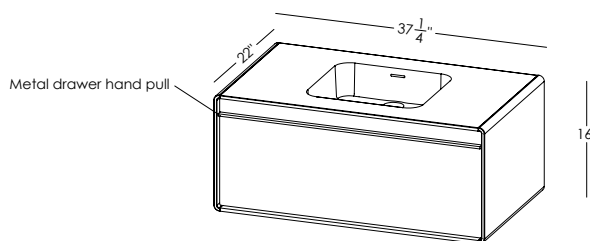
Déco

Vanity DCO 36WM – Wall-mount – 1 Drawer – 36" length

inch 22 depth x 37 1/4 length x 17 height mm 559 x 957 x 432

Features

- Hand pull in solid stainless steel
- All natural wood veneer
- AWI rated level 5 marine grade finish for moisture resistance and durability (industry's highest finishing class)
- Finished interior drawers
- Slow closing ball bearing glides
- Special wall preparation recommendations
the distance between studs should not exceed 16". Each stud should be reinforced vertically by 2"x 3" wooden studs and horizontally with 2"x 6" wooden studs at a height of 30" all along the width of the vanity.



Finishes and colors

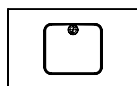
- oak - natural/wenge/white/black/stone harbour grey coffee bean/smoked
- walnut - natural no calico/chocolate
- matte lacquer - white/black/stone harbour grey
- premium - mozambique/torried eucalyptus
- stainless steel - brushed/satin brass/matte black

Drawer configuration



Horseshoe

Integrated countertop possibility sold separately



VDCOXS 36

WETSTYLE cannot be held responsible for any technical errors and reserves the right to make revisions without notice.

Approximate measurement. The manufacturer accept 1/4" (6.35mm) variance.

www.WETSTYLE.COM - Montreal - Canada
Tel. 1 888.536.9001 - service@wetstyle.com

WET
STYLE

Finish configurator for DCO 36WM vanity

DCO36WM-

How to build a code:

DCO36WM-	DRAWER FACADE		EXTERIOR		METAL FINISH
	Déco 36* Wall-Mounted	W or L	W or L	Color code	Metal code

Use following tables to ensure your finish combination is possible

1 AVAILABLE CONFIGURATIONS (EX: DCO36WM-W11L21-MB)

CONFIGURATION	DRAWER FACADE	EXTERIOR	NEXT STEP
WL	Wood (W)	Lacquer (L)	Go to 2.1
WW	Wood (W)	Wood (W)	Go to 2.2
LL	Lacquer (L)	Lacquer (L)	Go to 2.3

2 BASE CODE (EX: DCO36WM-W11L21-MB)

2.1 WL CONFIGURATIONS

DRAWER FACADE	EXTERIOR	CODE FOR WL CONFIG
Oak Natural (1)	White matte (21)	DCO36WM-W1L21
Oak Wenge (2)	White matte (21)	DCO36WM-W2L21
Oak White (5)	White matte (21)	DCO36WM-W5L21
Oak Black (31)	White matte (21)	DCO36WM-W31L21
Oak St. Har. Grey (36)	White matte (21)	DCO36WM-W36L21
Oak Coffee bean (37)	White matte (21)	DCO36WM-W37L21
Oak Smoked (38)	White matte (21)	DCO36WM-W38L21
Walnut Natural (11)	White matte (21)	DCO36WM-W11L21
Walnut Nat. No Calico (12)	White matte (21)	DCO36WM-W12L21
Walnut Chocolate (16)	White matte (21)	DCO36WM-W16L21
Torrified Eucalyptus* (81)	White matte (21)	DCO36WM-W81L21
Mozambique* (82)	White matte (21)	DCO36WM-W82L21

2.2 WW CONFIGURATION

DRAWER FACADE + EXTERIOR	CODE FOR WW CONFIG
Oak Natural (1)	DCO36WM-W1W1
Oak Wenge (2)	DCO36WM-W2W2
Oak White (5)	DCO36WM-W5W5
Oak Black (31)	DCO36WM-W31W31
Oak St. Har. Grey (36)	DCO36WM-W36W36
Oak Coffee bean (37)	DCO36WM-W37W37
Oak Smoked (38)	DCO36WM-W38W38
Walnut Natural (11)	DCO36WM-W11W11
Walnut Natural No Calico (12)	DCO36WM-W12W12
Walnut Chocolate (16)	DCO36WM-W16W16
Torrified Eucalyptus* (81)	n/a
Mozambique* (82)	n/a

2.3 LL CONFIGURATION

DRAWER FACADE	EXTERIOR	CODE FOR LL CONFIG
White (21)	White (21)	DCO36WM-L21L21
White (21)	Black (29)	DCO36WM-L21L29
White (21)	St. Har. Grey (28)	DCO36WM-L21L28
Black (29)	Black (29)	DCO36WM-L29L29
Black (29)	White (21)	DCO36WM-L29L21
St. Har. Grey (28)	St. Har. Grey (28)	DCO36WM-L28L28
St. Har. Grey (28)	White (21)	DCO36WM-L28L21

3 SELECT METAL FINISH (EX: DCO36WM-W11L21-MB)

For legs and drawer hand pull. Made of stainless steel
Add metal code at the end of the base code

ADD TO CODE	FINISH
-MB	Matte black powder coated
-SB	Satin brass PVD
-BR	Brushed steel

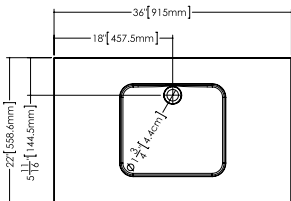


Déco

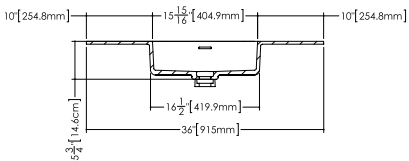
Compatible integrated countertop for **DCO 36WM** vanity

Lavatory **VDCOXS 36**

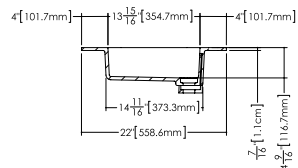
inch 36 1/8 x 22 1/16 x 7/16 mm 917 x 561 x 11



Top view



Front view



Profile view

WETSTYLE cannot be held responsible for any technical errors and reserves the right to make revisions without notice.
 Approximate measurement. The manufacturer accept 1/4" (6.35mm) variance.

www.WETSTYLE.COM - Montreal - Canada
 Tel. 1 888.536.9001 - service@wetstyle.com





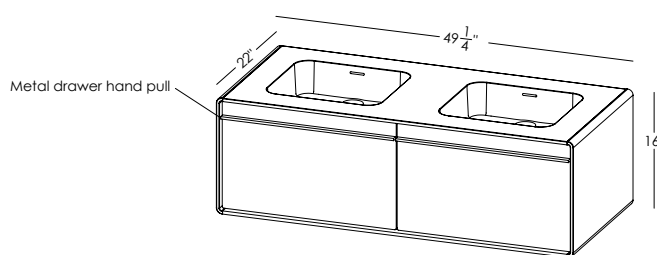
Déco

Vanity DCO 48WM – Wall-mount – 2 Drawers – 48" length

inch 22 depth x 49 1/4 length x 17 height mm 559 x 1262 x 432

Features

- Hand pull in solid stainless steel
- All natural wood veneer
- AWI rated level 5 marine grade finish for moisture resistance and durability (industry's highest finishing class)
- Finished interior drawers
- Slow closing ball bearing glides
- Special wall preparation recommendations
the distance between studs should not exceed 16". Each stud should be reinforced vertically by 2"x 3" wooden studs and horizontally with 2"x 6" wooden studs at a height of 30" all along the width of the vanity.



Finishes and colors

- oak - natural / wenge / white / black / stone harbour grey coffee bean / smoked
- walnut - natural no calico / chocolate
- matte lacquer - white / black / stone harbour grey
- premium - mozambique / torrifed eucalyptus
- stainless steel - brushed / satin brass / matte black

Drawers configuration

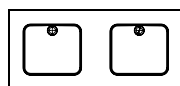


LEFT
Horseshoe



RIGHT
Horseshoe

Integrated countertop possibility sold separately



VDCOXS 48

WETSTYLE cannot be held responsible for any technical errors and reserves the right to make revisions without notice.

Approximate measurement. The manufacturer accept 1/4" (6.35mm) variance.

www.WETSTYLE.COM - Montreal - Canada
Tel. 1 888.536.9001 - service@wetstyle.com

WET
STYLE

Finish configurator for DCO 48WM vanity

How to build a code:

DCO48WM-

Déco 48*
Wall-Mounted

DRAWER FACADE
W
or
L

Color
code

EXTERIOR
W
or
L

Color
code

METAL FINISH
Metal
code

Use following tables to ensure your finish combination is possible

1 AVAILABLE CONFIGURATIONS (EX: DCO48WM-W11L21-MB)

CONFIGURATION	DRAWER FACADE	EXTERIOR	NEXT STEP
WL	Wood (W)	Lacquer (L)	Go to 2.1
WW	Wood (W)	Wood (W)	Go to 2.2
LL	Lacquer (L)	Lacquer (L)	Go to 2.3

2 BASE CODE (EX: DCO48WM-W11L21-MB)

2.1 WL CONFIGURATIONS

DRAWER FACADE	EXTERIOR	CODE FOR WL CONFIG
Oak Natural (1)	White matte (21)	DCO48WM-W1L21
Oak Wenge (2)	White matte (21)	DCO48WM-W2L21
Oak White (5)	White matte (21)	DCO48WM-W5L21
Oak Black (31)	White matte (21)	DCO48WM-W31L21
Oak St. Har. Grey (36)	White matte (21)	DCO48WM-W36L21
Oak Coffee bean (37)	White matte (21)	DCO48WM-W37L21
Oak Smoked (38)	White matte (21)	DCO48WM-W38L21
Walnut Natural (11)	White matte (21)	DCO48WM-W11L21
Walnut Nat. No Calico (12)	White matte (21)	DCO48WM-W12L21
Walnut Chocolate (16)	White matte (21)	DCO48WM-W16L21
Torrified Eucalyptus* (81)	White matte (21)	DCO48WM-W81L21
Mozambique* (82)	White matte (21)	DCO48WM-W82L21

2.2 WW CONFIGURATION

DRAWER FACADE + EXTERIOR	CODE FOR WW CONFIG
Oak Natural (1)	DCO48WM-W1W1
Oak Wenge (2)	DCO48WM-W2W2
Oak White (5)	DCO48WM-W5W5
Oak Black (31)	DCO48WM-W31W31
Oak St. Har. Grey (36)	DCO48WM-W36W36
Oak Coffee bean (37)	DCO48WM-W37W37
Oak Smoked (38)	DCO48WM-W38W38
Walnut Natural (11)	DCO48WM-W11W11
Walnut Natural No Calico (12)	DCO48WM-W12W12
Walnut Chocolate (16)	DCO48WM-W16W16
Torrified Eucalyptus* (81)	n/a
Mozambique* (82)	n/a

2.3 LL CONFIGURATION

DRAWER FACADE	EXTERIOR	CODE FOR LL CONFIG
White (21)	White (21)	DCO48WM-L21L21
White (21)	Black (29)	DCO48WM-L21L29
White (21)	St. Har. Grey (28)	DCO48WM-L21L28
Black (29)	Black (29)	DCO48WM-L29L29
Black (29)	White (21)	DCO48WM-L29L21
St. Har. Grey (28)	St. Har. Grey (28)	DCO48WM-L28L28
St. Har. Grey (28)	White (21)	DCO48WM-L28L21

3 SELECT METAL FINISH (EX: DCO48WM-W11L21-MB)

For legs and drawer hand pull. Made of stainless steel
Add metal code at the end of the base code

ADD TO CODE	FINISH
-MB	Matte black powder coated
-SB	Satin brass PVD
-BR	Brushed steel

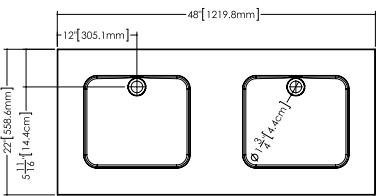


Déco

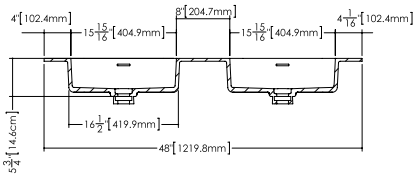
Compatible integrated countertop for **DCO 48WM** vanity

Lavatory **VDCOXS 48**

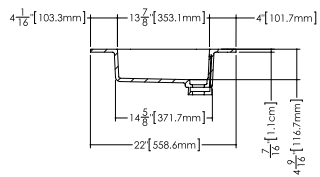
inch 48 1/8 x 22 1/16 x 7/16 mm 1222 x 561 x 11



Top view



Front view



Profile view

WETSTYLE cannot be held responsible for any technical errors and reserves the right to make revisions without notice.
Approximate measurement. The manufacturer accept 1/4" (6.35mm) variance.



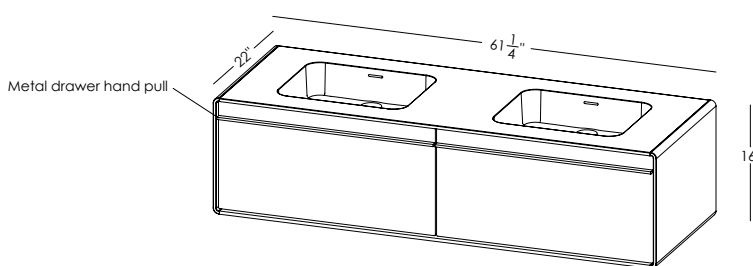
Déco

Vanity **DCO 60WM** – Wall-mount – 2 Drawers – 60" length

inch 22 depth x 61 1/4 length x 17 height mm 559 x 1567 x 432

Features

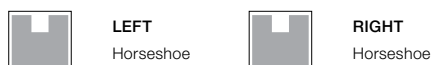
- Hand pull in solid stainless steel
- All natural wood veneer
- AWI rated level 5 marine grade finish for moisture resistance and durability (industry's highest finishing class)
- Finished interior drawers
- Slow closing ball bearing glides
- Special wall preparation recommendations
the distance between studs should not exceed 16". Each stud should be reinforced vertically by 2"x 3" wooden studs and horizontally with 2"x 6" wooden studs at a height of 30" all along the width of the vanity.



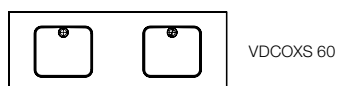
Finishes and colors

- oak - natural / wenge / white / black / stone harbour grey coffee bean / smoked
- walnut - natural no calico / chocolate
- matte lacquer - white / black / stone harbour grey
- premium - mozambique / torrifed eucalyptus
- stainless steel - brushed / satin brass / matte black

Drawers configuration



**Integrated countertop possibility
sold separately**



WETSTYLE cannot be held responsible for any technical errors and reserves the right to make revisions without notice.
Approximate measurement. The manufacturer accept 1/4" (6.35mm) variance.

www.WETSTYLE.COM - Montreal - Canada
Tel. 1 888.536.9001 - service@wetstyle.com



Finish configurator for DCO 60WM vanity

DCO60WM-

How to build a code:

DCO60WM-	DRAWER FACADE		EXTERIOR		METAL FINISH
	Déco 60* Wall-Mounted	W or L	W or L	Color code	Metal code

Use following tables to ensure your finish combination is possible

1 AVAILABLE CONFIGURATIONS (EX: DCO60WM-W11L21-MB)

CONFIGURATION	DRAWER FACADE	EXTERIOR	NEXT STEP
WL	Wood (W)	Lacquer (L)	Go to 2.1
WW	Wood (W)	Wood (W)	Go to 2.2
LL	Lacquer (L)	Lacquer (L)	Go to 2.3

2 BASE CODE (EX: DCO60WM-W11L21-MB)

2.1 WL CONFIGURATIONS

DRAWER FACADE	EXTERIOR	CODE FOR WL CONFIG
Oak Natural (1)	White matte (21)	DCO60WM-W1L21
Oak Wenge (2)	White matte (21)	DCO60WM-W2L21
Oak White (5)	White matte (21)	DCO60WM-W5L21
Oak Black (31)	White matte (21)	DCO60WM-W31L21
Oak St. Har. Grey (36)	White matte (21)	DCO60WM-W36L21
Oak Coffee bean (37)	White matte (21)	DCO60WM-W37L21
Oak Smoked (38)	White matte (21)	DCO60WM-W38L21
Walnut Natural (11)	White matte (21)	DCO60WM-W11L21
Walnut Nat. No Calico (12)	White matte (21)	DCO60WM-W12L21
Walnut Chocolate (16)	White matte (21)	DCO60WM-W16L21
Torrified Eucalyptus* (81)	White matte (21)	DCO60WM-W81L21
Mozambique* (82)	White matte (21)	DCO60WM-W82L21

2.2 WW CONFIGURATION

DRAWER FACADE + EXTERIOR	CODE FOR WW CONFIG
Oak Natural (1)	DCO60WM-W1W1
Oak Wenge (2)	DCO60WM-W2W2
Oak White (5)	DCO60WM-W5W5
Oak Black (31)	DCO60WM-W31W31
Oak St. Har. Grey (36)	DCO60WM-W36W36
Oak Coffee bean (37)	DCO60WM-W37W37
Oak Smoked (38)	DCO60WM-W38W38
Walnut Natural (11)	DCO60WM-W11W11
Walnut Natural No Calico (12)	DCO60WM-W12W12
Walnut Chocolate (16)	DCO60WM-W16W16
Torrified Eucalyptus* (81)	n/a
Mozambique* (82)	n/a

2.3 LL CONFIGURATION

DRAWER FACADE	EXTERIOR	CODE FOR LL CONFIG
White (21)	White (21)	DCO60WM-L21L21
White (21)	Black (29)	DCO60WM-L21L29
White (21)	St. Har. Grey (28)	DCO60WM-L21L28
Black (29)	Black (29)	DCO60WM-L29L29
Black (29)	White (21)	DCO60WM-L29L21
St. Har. Grey (28)	St. Har. Grey (28)	DCO60WM-L28L28
St. Har. Grey (28)	White (21)	DCO60WM-L28L21

3 SELECT METAL FINISH (EX: DCO60WM-W11L21-MB)

For legs and drawer hand pull. Made of stainless steel
Add metal code at the end of the base code

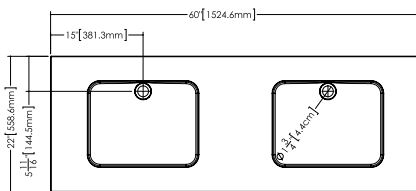
ADD TO CODE	FINISH
-MB	Matte black powder coated
-SB	Satin brass PVD
-BR	Brushed steel



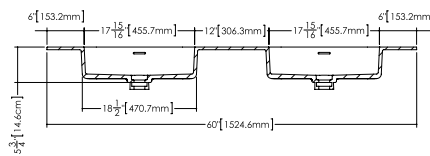
Compatible integrated countertop for **DCO 60WM** vanity

Lavatory **VDCOXS 60**

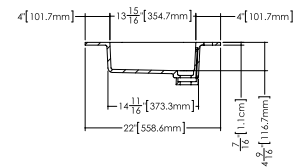
inch 60 ¹/₈ x 22 ¹/₁₆ x ⁷/₁₆ mm 1527 x 561 x 11



Top view



Front view



Profile view

WETSTYLE cannot be held responsible for any technical errors and reserves the right to make revisions without notice.

Approximate measurement. The manufacturer accept 1/4" (6.35mm) variance.

www.WETSTYLE.COM - Montreal - Canada
Tel. 1 888.536.9001 - service@wetstyle.com

