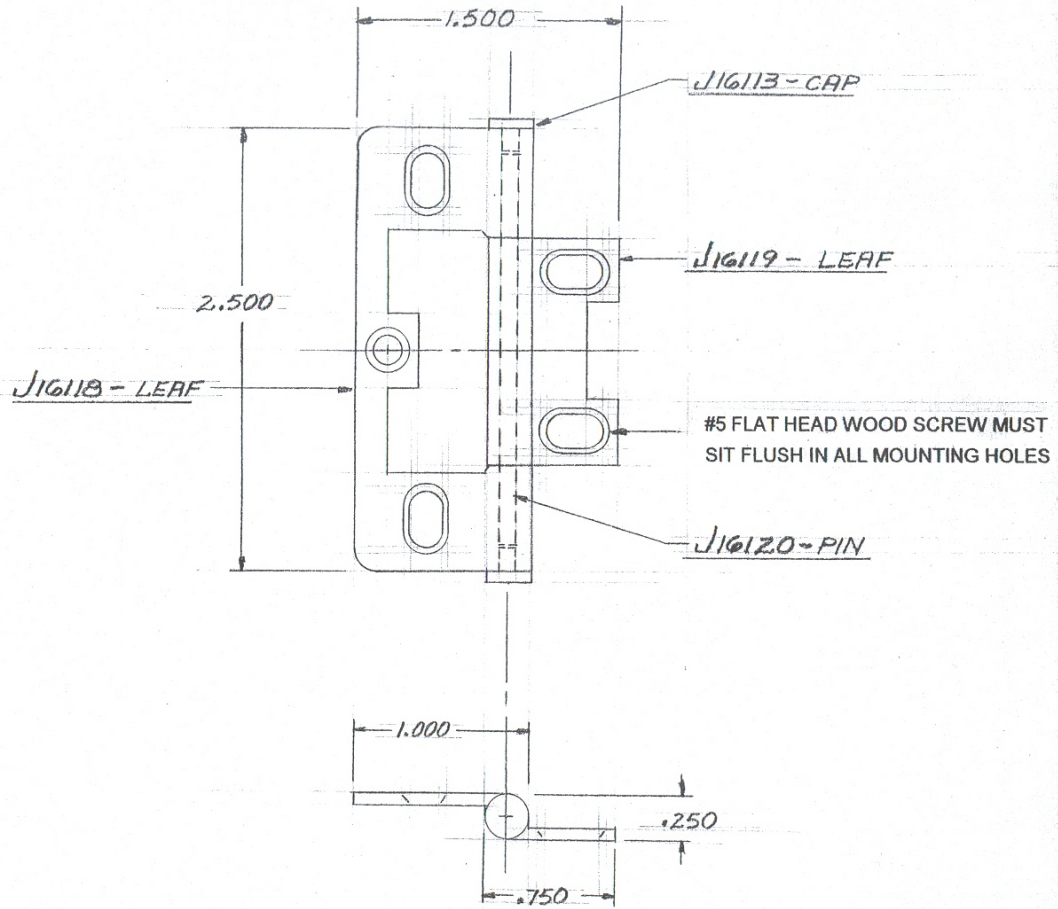


X-Number

Print No: *J16117*



J16042 - SIMILAR (STAMPED)

NOTICE: Jamestown Furniture Hardware Corp. claims proprietary rights in the information disclosed on this drawing. It is issued in confidence for engineering only and may not be reproduced or used to manufacture anything shown herein without direct written permission from Jamestown Furniture Hardware Corp.

Revisions

Tolerance Unless Otherwise Specified		Jamestown FURNITURE HARDWARE CORP.	
Cast Brass: ±1/32	Zinc/Brass Die Cast: .XX±.010 .XXX±.005	137 Water St., Jamestown, N.Y. 14701 Phone: 716-664-4321 · Fax: 716-664-4309	
Sheet Metal/Turnings/Extrusions FRACTIONS ±1/64 .XX±.010 .XXX±.005		Description	<i>HINGE ASSEMBLY</i>
Forging: FRACTIONS ±1/64 .XX±.010 .XXX±.005		CAD Print No.	<i>J16117</i>
Drawn By	Scale	Date Drawn	
<i>WH</i>		<i>1-26-09</i>	
Material	Alloy	Customer	