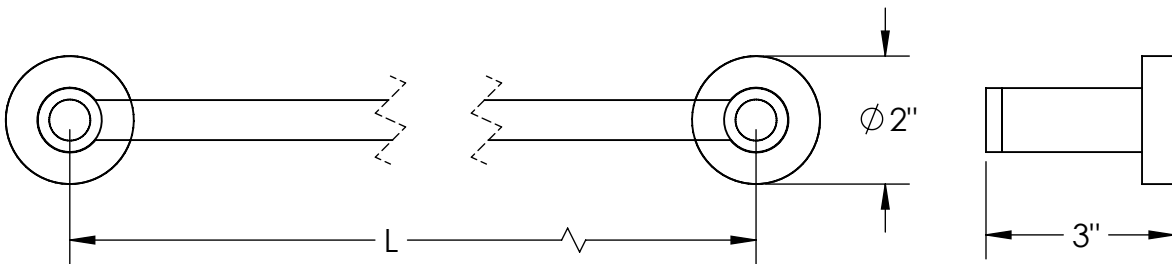


**70-0.1_-_
Towel Bar**



| Model No. | Center to Center Distance |
|-----------|---------------------------|
| 70-0.1 | 18" |
| 70-0.1A | 24" |
| 70-0.1B | 30" |



Meets the applicable requirements of ASME A112.18.1-2005/CSA B125.1-05, entitled "Plumbing Supply Fittings"