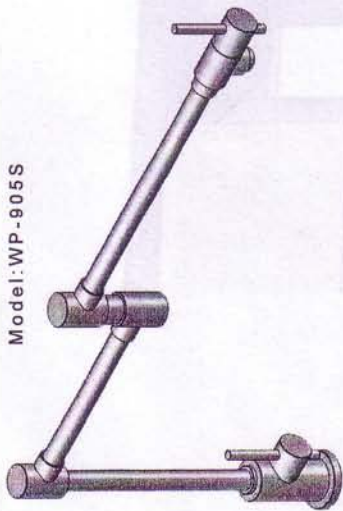


Model: WP-905S



DESCRIPTION

- DOUBLE JOINTED SWING SPOUT
- VICTORIAN LEVER HANDLE
- 1/4" TURN, SHUT-OFF VALVE LOCATED AT DECK

Maintenance

Cleaning Materials for Pot Filler

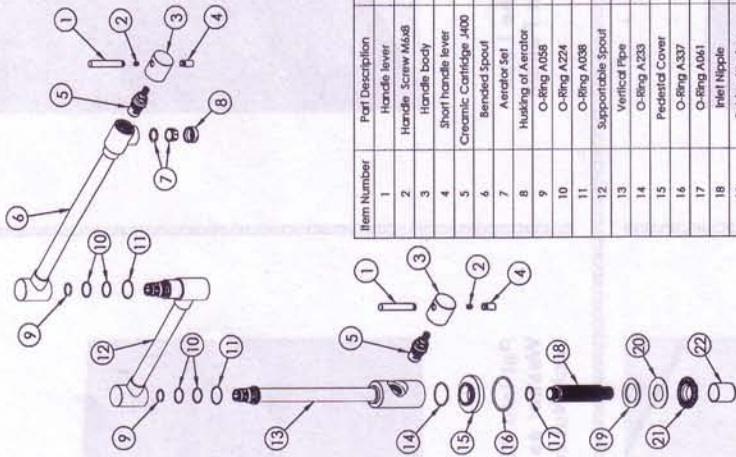
Do not use cleansers that contain hydrochloric, formic, acetic, or phosphoric acids, as these will cause considerable damage to finishes and to some components.
 Never mix cleaning materials.
 Never use cleaners containing abrasives. Do not use abrasive cleaning cloths, pads, or sponges.

Cleaning Procedures

Clean your Pot Filler when required. Regular cleaning will prevent scale buildup and water spotting.
 Follow the label instructions. Do not allow any cleaner to remain on the product for longer than necessary.
 When using spray cleaners, spray first onto a sponge or cloth – DO NOT spray directly onto the product.
 After cleaning, rinse thoroughly with clear water to remove any cleaner residue.

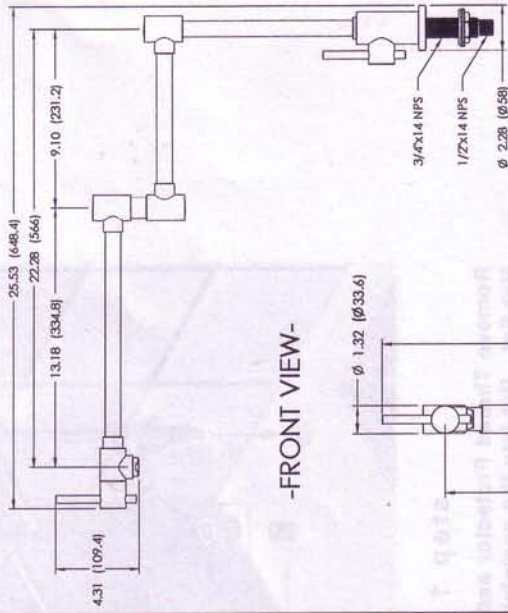
Important

• Soap and shampoo residue can also cause damage to the product. Rinse well with clean water after use.
 • If the surface is already damaged, harsh cleaning materials will cause further damage.

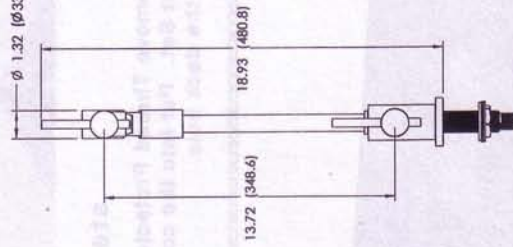


Item Number	Part Description	Quantity
1	Handle lever	2
2	Handle Screw M6x8	2
3	Handle body	2
4	Short handle lever	2
5	Ceramic Cartridge J400	2
6	Bentead Spout	1
7	Aerator Set	1
8	Hubling of Aerator	1
9	O-Ring A058	2
10	O-Ring A224	4
11	O-Ring A058	2
12	Supportable Spout	1
13	Vertical Pipe	1
14	O-Ring A233	1
15	Pedestal Cover	1
16	O-Ring A337	1
17	O-Ring A061	1
18	Inlet Nipple	1
19	Rubber Washer	1
20	Plastic Washer	1
21	Locknut	1
22	Thread Protector	1

-SIDE VIEW-



-FRONT VIEW-

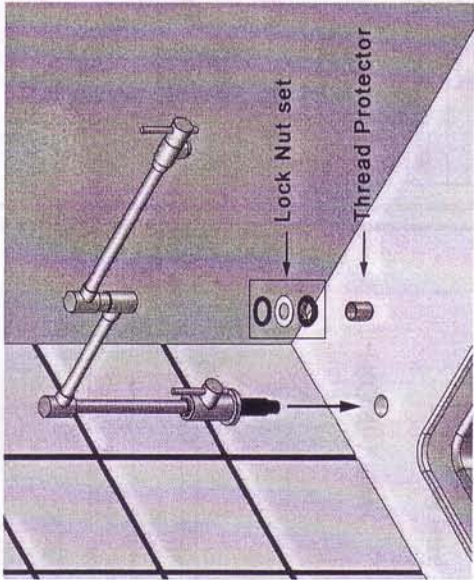


*** You may need**

HACKSAW	PIPE WRENCH	PHILLIPS SCREWDRIVER	STANDARD SCREWDRIVER	ALLEN KEY
HAMMER	ADJUSTABLE WRENCH	SLIP PIERS	WATER-PUMP PIERS	TELEON TAPE

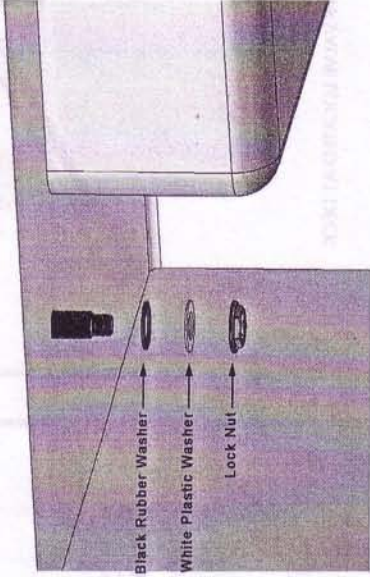
- Refer to EXPLODED DRAWING to familiarize yourself with the various parts of the Pot Filler.
 Make sure you have all the illustrated parts before you begin installation.
- * Observe all local plumbing codes.
 - * Carefully inspect the faucet for any damage.
 - * Flush all piping thoroughly before installing.
 - * Shut off the water supply.

*** Installation Instructions ***



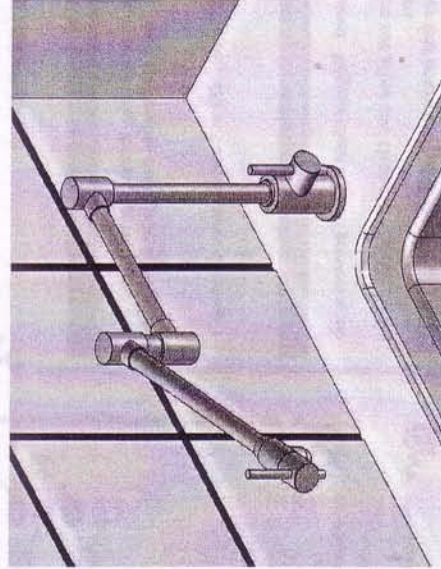
step 1

Remove Thread Protector and take off the Lock Nut Set. Put into the complete Pot Filler Faucet to the deck hole.



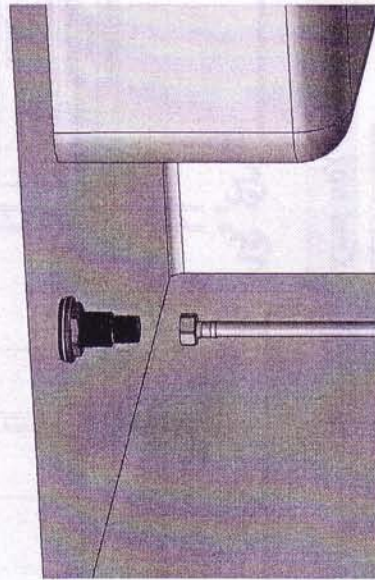
step 2

Put into Black Rubber Washer and White Plastic Washer as shown as figure. Screw and tight the Lock Nut for fixed the complete faucet.



step 4

Swivel the spout for make sure all operate motions are smooth and well.



step 3

Connect the water supply to inlet pipe/hose. To flush the water supply pipe/hose before installation is necessary. And screw the hexagon nut of supply hose by Opened/Adjustable wrench.