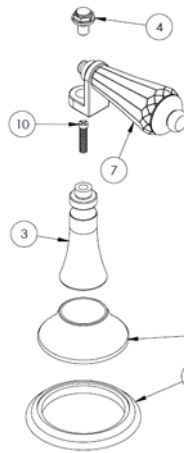
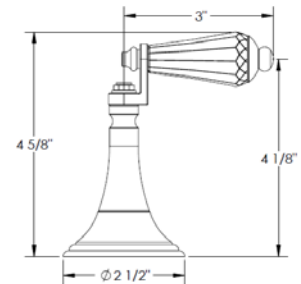


## HANDLE TRIMS

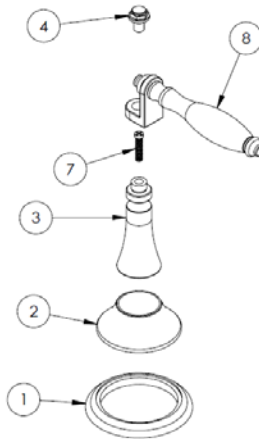
### Diamond (Code: U3)



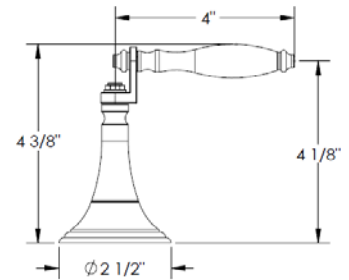
| ITEM NO. | PART NUMBER        | QTY. |
|----------|--------------------|------|
| 1        | U5-ESC-RING        | 1    |
| 2        | U5-ESC             | 1    |
| 3        | U5-POST            | 1    |
| 4        | U5-POST-CAP        | 1    |
| 7        | SW-CRSTL-LVR-INSRT | 1    |
| 10       | F-POST-SCRW        | 1    |



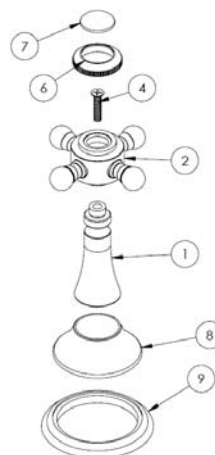
### Emporium (Code: U5)



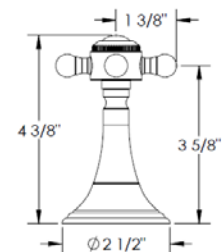
| ITEM NO. | PART NUMBER  | QTY. |
|----------|--------------|------|
| 1        | U5-ESC-RING  | 1    |
| 2        | U5-ESC       | 1    |
| 3        | U5-POST      | 1    |
| 4        | U5-POST-CAP  | 1    |
| 7        | F-POST-SCRW  | 1    |
| 8        | U5-LVR-INSRT | 1    |



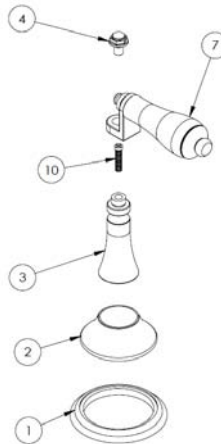
### Povincial (Code: U6)



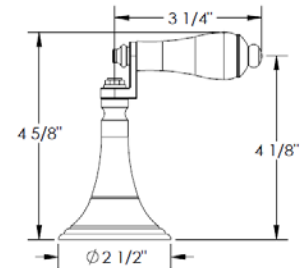
| ITEM NO. | PART NUMBER                  | QTY. |
|----------|------------------------------|------|
| 1        | U5-POST                      | 1    |
| 2        | V-POST                       | 1    |
| 4        | CR-FHM1 0.164-32x0.75x0.75-S | 1    |
| 6        | X-CAP-RING                   | 1    |
| 7        | X-PRCLN-INSRT-PLN            | 1    |
| 8        | U5-ESC                       | 1    |
| 9        | U5-ESC-RING                  | 1    |



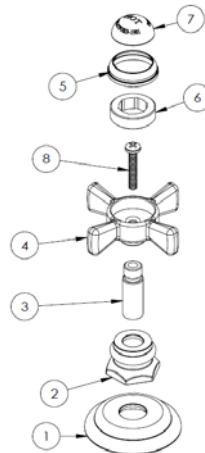
### Regal (Code: U7)



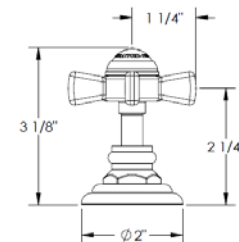
| ITEM NO. | PART NUMBER        | QTY. |
|----------|--------------------|------|
| 1        | U5-ESC-RING        | 1    |
| 2        | U5-ESC             | 1    |
| 3        | U5-POST            | 1    |
| 4        | U5-POST-CAP        | 1    |
| 7        | S3-PRCLN-LVR-INSRT | 1    |
| 10       | F-POST-SCRW        | 1    |



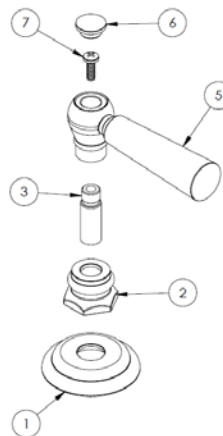
### Preston (Code: S1)



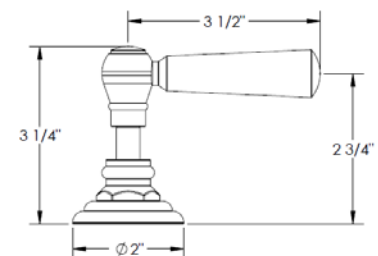
| ITEM NO. | PART NUMBER                   | QTY. |
|----------|-------------------------------|------|
| 1        | S1-ESC                        | 1    |
| 2        | S1-ESC-NUT                    | 1    |
| 3        | S1-STEM                       | 1    |
| 4        | S1-HNDL-(COLD/HOT)            | 1    |
| 5        | S1-CAP-RING                   | 1    |
| 6        | S1-CAP-ADAP                   | 1    |
| 7        | S1-PRCLN-INSRT-(PLN/COLD/HOT) | 1    |
| 8        | CR-PHMS 0.164-32x1x1-S        | 1    |



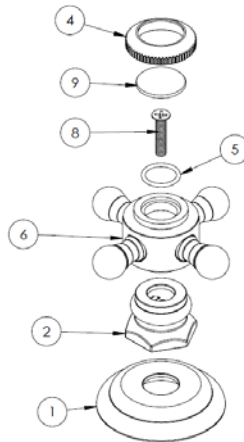
### Nottingham (Code: S1A)



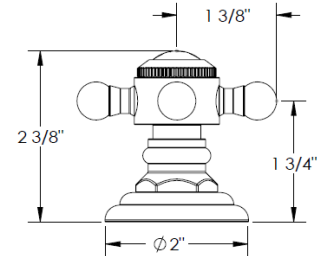
| ITEM NO. | PART NUMBER                | QTY. |
|----------|----------------------------|------|
| 1        | S1-ESC                     | 1    |
| 2        | S1-ESC-NUT                 | 1    |
| 3        | S1-STEM                    | 1    |
| 5        | S1A-LVR                    | 1    |
| 6        | A-POST-CAP                 | 1    |
| 7        | CR-PHMS 0.164-32x0.5x0.5-S | 1    |



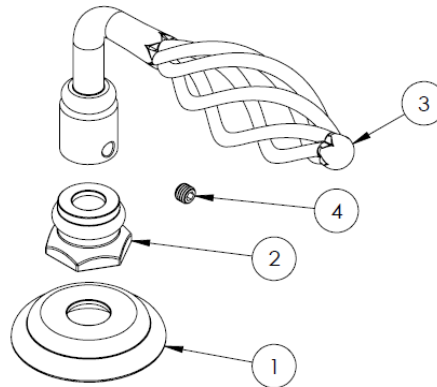
### Wales (Code: V)



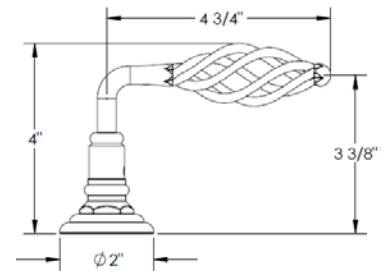
| ITEM NO. | PART NUMBER                  | QTY. |
|----------|------------------------------|------|
| 1        | S1-ESC                       | 1    |
| 2        | S1-ESC-NUT                   | 1    |
| 4        | X-CAP-RING                   | 1    |
| 5        | AS568 - 014                  | 1    |
| 6        | V-POST                       | 1    |
| 8        | CR-FHM1 0.164-32x0.75x0.75-S | 1    |
| 9        | X-PRCLN-INSRT-PLN            | 1    |



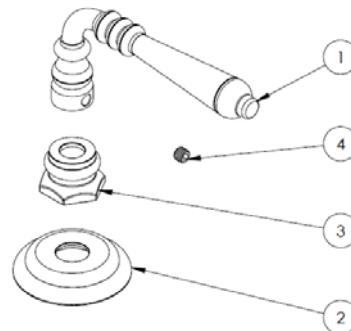
### Le Château (Code: BV05)



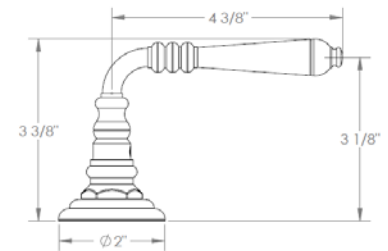
| ITEM NO. | DESCRIPTION   | QTY. |
|----------|---|------|
| 1        | S1-ESC  | 1    |
| 2        | S1-ESC-NUT  | 1    |
| 3        | BV05-LVR  | 1    |
| 4        | B18.3.6M - M6 x 1 x 5 Hex Socket Type I Cup Pt. SS -S | 1    |



### Le Château (Code: BV13)



| ITEM NO. | PART NUMBER   | QTY. |
|----------|---|------|
| 1        | BV13-LVR  | 1    |
| 2        | S1-ESC  | 1    |
| 3        | S1-ESC-NUT  | 1    |
| 4        | B18.3.6M - M6 x 1 x 5 Hex Socket Type I Cup Pt. SS -S | 1    |



## Specification from Finished Wall to Tip of Broach Stem

| HANDLE TRIM #  | MEASUREMENT (IN.) |
|----------------|-------------------|
| U3/ U5/ U6/ U7 | 3 1/4             |
| S1/ S1A        | 2 1/4             |
| V              | 2 1/4             |
| BV05           | 2                 |
| BV13           | 2 1/2             |

Note: When fitting handle it may be necessary to shorten broach stem and/or threaded nipple to eliminate gap between handle and escutcheon

### **IMPORTANT INSTALLATION INFORMATION**

- USE TEFLON TAPE OR PIPE SEALANT FOR THREADED CONNECTIONS
- DO NOT USE PLUMBER'S PUTTY ON ANY OF THE BRASS COMPONENTS  
This will cause the finish to tarnish and void the warranty. A non-corrosive Alkoxy Silicone is recommended.
- DURING SWEATING OF LINES DO NOT OVERHEAT CASTING  
Overheating may cause damage to internal mechanism
- COPPER ADAPTORS MAY BE REQUIRED TO COMPLETE YOUR INSTALLATION

**For technical support, please call 718-257-2800**