

BOND

BKM47A

Bond Tandem Series One Hole Gooseneck Bar Faucet with
Guilloche Lines Lever Handle



SHOWN IN BOND TANDEM SERIES ONE HOLE GOOSENECK BAR FAUCET WITH GUILLOCHE LINES LEVER HANDLE | BKM47A

TECHNICAL DETAILS

ADA Compliance: Yes
 Deck Thickness Maximum: 1 1/2"
 Deck Thickness Minimum: 1/4"
 Fittings Hole Diameter: 1 3/8"
 Handle Turn Angle: Quarter Turn
 Inlet Connection Size: 3/8"
 Inlet Connection Type: Compression Connection Hoses
 Restricted Maximum Flow Rate: 1.75 gpm
 Spout Swivel: Y
 Valve Material: Ceramic
 Water Pressure Maximum: 85.0 psi
 Water Pressure Minimum: 25.0 psi
 Water Pressure Recommended: 45.0 psi

INSPIRATION

Modern designs infused with rare soul and artistry. Explore our wide range of Bond bath and kitchen elements, from fittings to fixtures to hardware.

CODES & STANDARDS

NSF/ANSI/CAN 61:Q < 1, ASME A112.18.1/CSA B125.1,
 CEC, State of MA

PRODUCT FEATURES

Lever Handle

Handle rotates toward the front to prevent contact with backsplash

Features Linear Guilloche Etching Handle

Stocked in Nickel and Brass

Available in 1.2gpm (4.5L/min) flow rate

CERTIFICATIONS

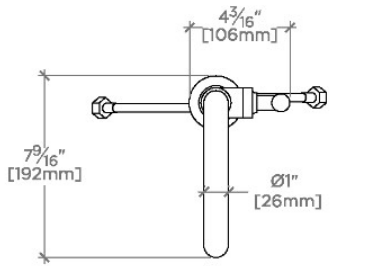


PRODUCT (NOTES)

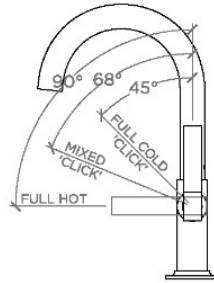
BOND

BKM47A

Bond Tandem Series One Hole Gooseneck Bar Faucet with
Guilloche Lines Lever Handle

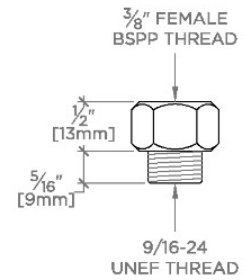
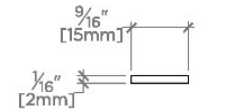


TOP VIEW SCALE: 1 1/2"=1'-0"

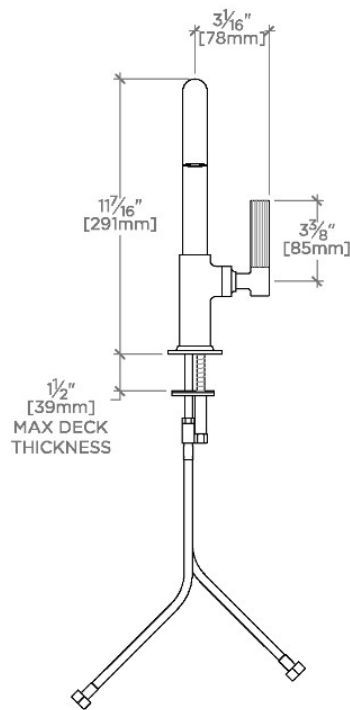


HANDLE OPERATION SCALE: 1 1/2"=1'-0"

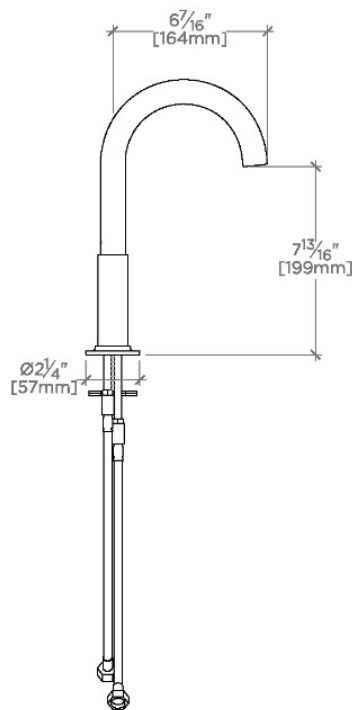
NOTE:
ADAPTER AND GASKET (x2)
INCLUDED - INTERNATIONAL
USE ONLY



NOT TO SCALE



FRONT VIEW SCALE: 1 1/2"=1'-0"



SIDE VIEW SCALE: 1 1/2"=1'-0"