

HENRY

Henry Volume Control Valve Trim with Metal Lever Handle

HNVC50



SHOWN IN HENRY VOLUME CONTROL VALVE TRIM WITH METAL LEVER HANDLE| HNVC50

TECHNICAL DETAILS

ADA Compliance: Yes
Control Valve Rough-in Depth Maximum: 3 3/4"
Control Valve Rough-in Depth Minimum: 2 1/2"
Escutcheon Primary Material: Brass
Fittings Hole Diameter: 1 3/8"
Depth / Width: 2 15/16"
Height: 4 9/16"
Integrated Diverter: N
Integrated Spray: N
Length: 2 3/8"
Number of Handles: One
Pivot: N
Primary Material: Brass
Spout Swivel: N
Spray Included in Unit: N
Suggested Application: Bath

INSPIRATION

Influenced by the connection of industry and art Henry easily transitions between modern, traditional, utilitarian and classic settings.

CODES & STANDARDS

Code # HNVC50X: Complies with ASME A112.18.1/CSA B125.1, cUPC, and ADA. Certified with IAPMO, State of MA.

PRODUCT FEATURES

The manufacturing process encompasses casting, turning, forging, hand-fitting and hand polishing. Brass material is used for components

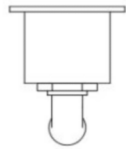
CERTIFICATIONS



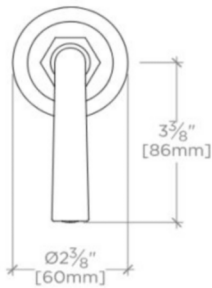
HENRY

HNVC50

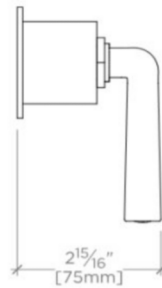
Henry Volume Control Valve Trim with Metal Lever Handle



TOP VIEW SCALE: 3"=1'-0"



FRONT VIEW SCALE: 3"=1'-0"



SIDE VIEW SCALE: 3"=1'-0"