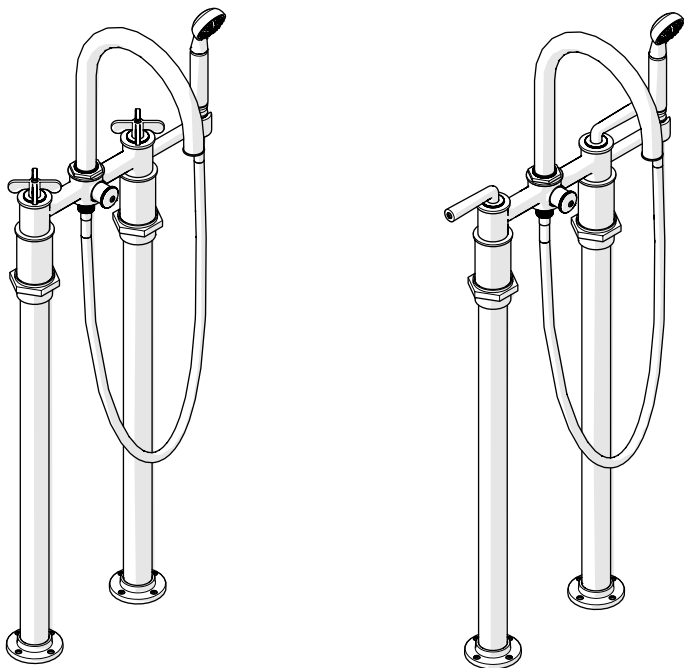


# INSTALLATION GUIDELINES

## FLOOR MOUNTED EXPOSED TUB FILLER

### HENRY AND HENRY CHRONOS FLOOR MOUNTED EXPOSED TUB FILLER WITH HANDSHOWER AND HANDLES



STYLES			
HXT301 [SHOWN]	HXT302	HXT311 [SHOWN]	HXT312
CXT301	CXT311	CXT314	CXT315

#### IMPORTANT:

- To ensure this product is installed properly, you must read and follow these guidelines.
- The owner/user of this product must keep this information for future reference.
- This product must be installed by a professional licensed contractor and must be on-site prior to rough-in. This allows the installer to visualize the installation and verify the 8" [203mm] on-center inlet supply spread. The inlet supply spread on this product is **NOT** adjustable.
- Check TUB measurements to ensure the SPOUT projects far enough into the TUB.
- Run 3/4" supply lines for **MAXIMUM** flow and install **ACCESSIBLE** hot and cold service stop valves to facilitate servicing.

- Be sure your installation conforms to all federal, state, and local codes.
  - Anti-scald protection is the responsibility of the installer and according to applicable codes.
  - A water temperature limiting device is the responsibility of the installer and must be in accordance with ASSE 1070.
  - In the State of Massachusetts, all installations must comply with the rules and regulations set forth within 248 CMR.
- Inspect this product to ensure you have all the parts required for proper installation. Product is sold partially assembled but shown fully disassembled for illustrative and service purposes only.
- Use only a strap wrench or protected/smooth-jaw wrench on any finished surface.
- The use of certain plumber's putty may stain stone or tile surfaces.
- If further assistance is required, please contact Product Support at 1-800-927-2120 Monday through Friday, 8am - 6pm EST.
- Refer to the separate Service Parts Documents for available replacement parts.

#### TECHNICAL DETAILS:

DETAIL	SPECIFICATION
DIAMETER OF HANDSHOWER HEAD	1-15/16" [49mm]
HANDLE TURN ANGLE	QUARTER TURN
HANDSHOWER HOSE LENGTH	60" [1.5m]
INLET CONNECTION	3/4" FEMALE NPT †
	3/4" COPPER SWEAT
INLET SUPPLY SPREAD [NOT ADJUSTABLE]	8" [203mm]
INTEGRATED DIVERTER	YES [PUSH STYLE]
PIVOT	YES [HANDSHOWER HOOK ONLY]
SPOUT REACH	8-1/2" [216mm]
WATER PRESSURE RANGE	20psi [1.5 bar] <b>MIN</b> 85psi [6.0 bar] <b>MAX</b>
WATER PRESSURE RECOMMENDED	45psi [3.0 bar]

#### † For INTERNATIONAL USE ONLY,

- 3/4" Male NPT x 1/2" Female BSPP ADAPTERS and RUBBER WASHERS are provided.

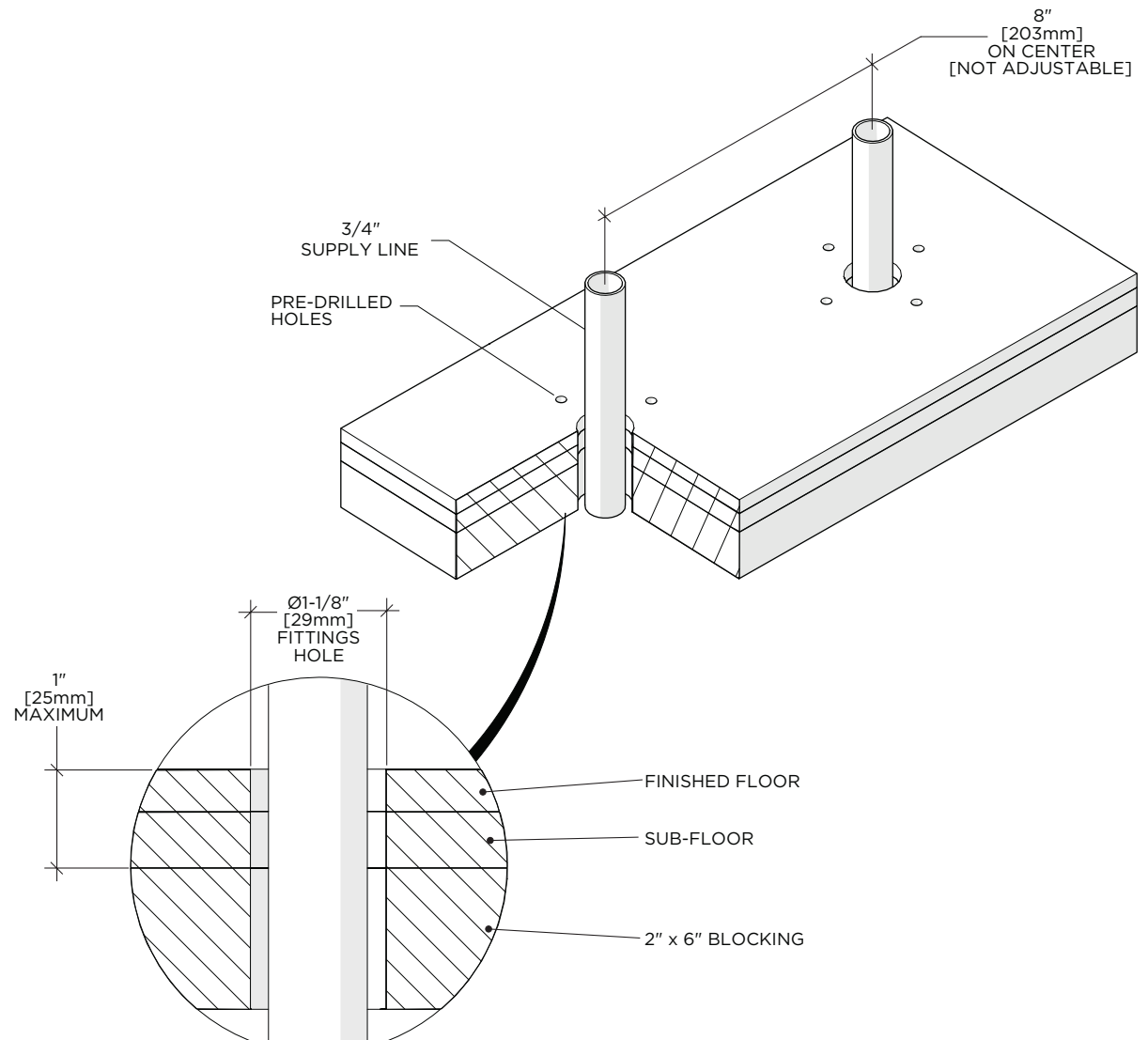
# INSTALLATION GUIDELINES

## FLOOR MOUNTED EXPOSED TUB FILLER

WATERWORKS

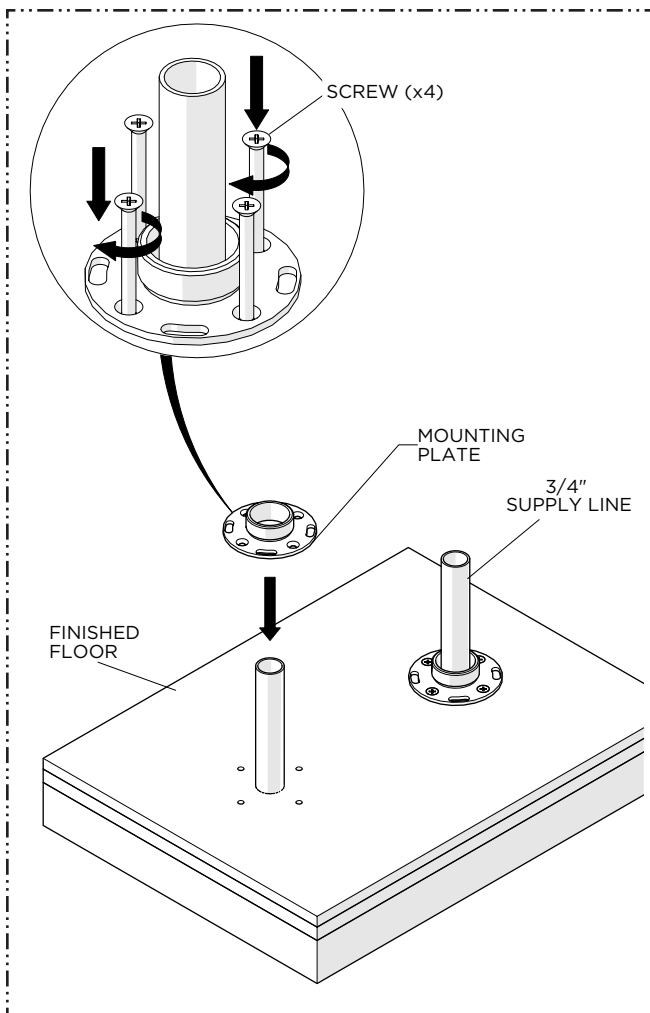
### ROUGH-IN:

- **WARNING:** The inlet supply spread on this product is **NOT** adjustable. If the rough-in is **NOT** accurate, it will make the installation difficult or impossible.
- Run well supported 3/4" hot and cold supply lines for **MAXIMUM** water flow. The 3/4" supply lines must be:
  - Securely anchored/strapped
  - Level
  - Perpendicular to the finished floor
  - Parallel to each other
  - At the proper spread
  - At the appropriate and equal depths
- Wood blocking is **REQUIRED** and should be no further than 1" from the finished floor for the MOUNTING SCREWS to create adequate support for the TUB FILLER.



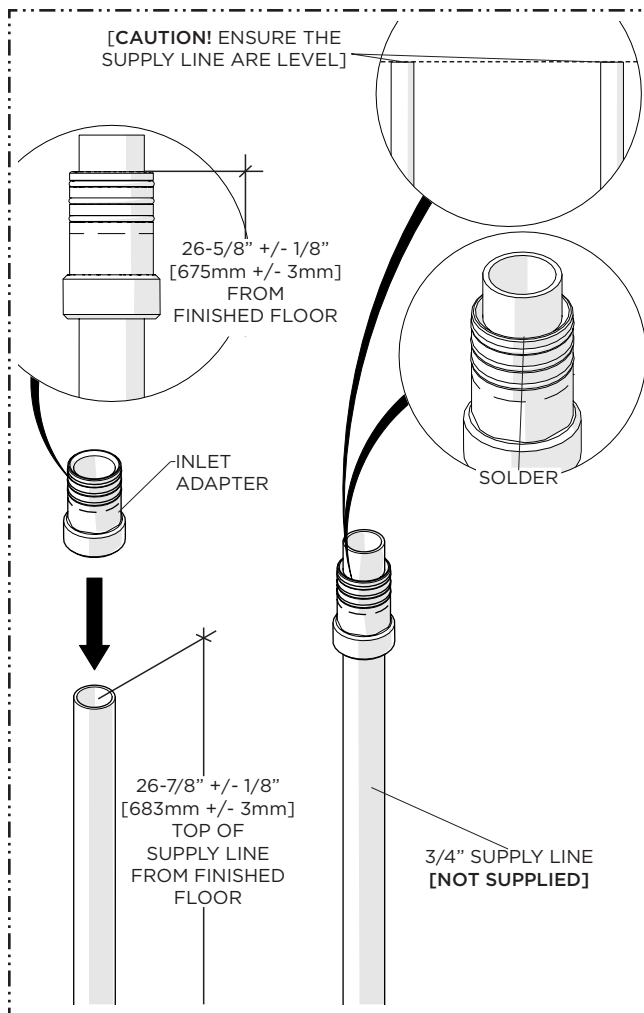
# INSTALLATION GUIDELINES

## FLOOR MOUNTED EXPOSED TUB FILLER



1. Slide the MOUNTING PLATES over the SUPPLY LINES in the correct orientation then:
  - a. Secure each MOUNTING PLATE using the SCREWS provided.

**NOTE:** Make sure to use the countersunk holes on the MOUNTING PLATE.

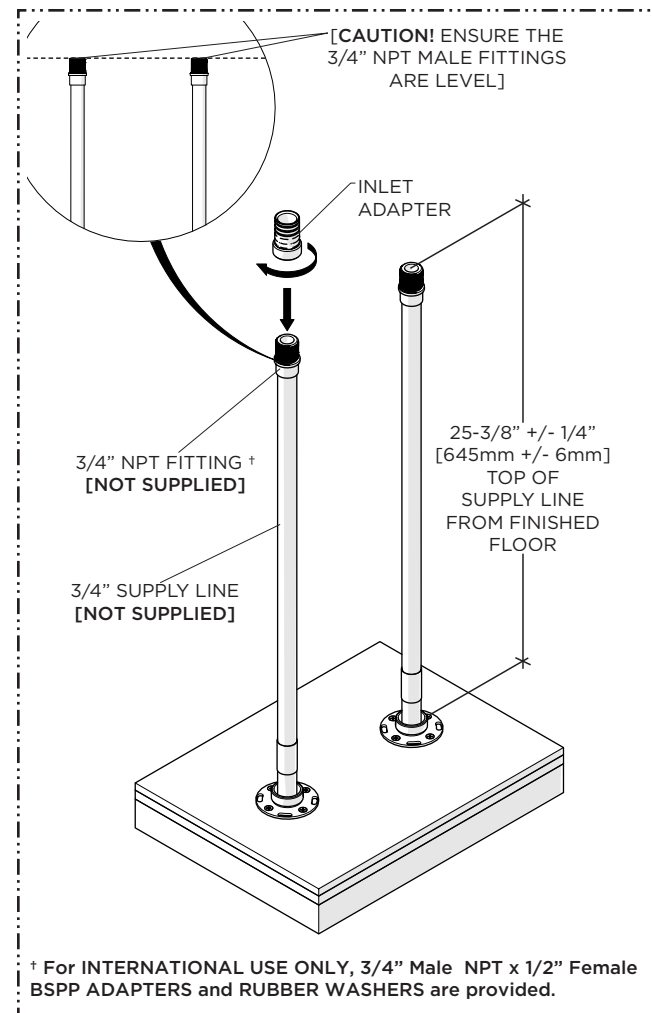


### SWEAT INSTALLATION:

2. Using 3/4" COUPLERS [NOT SUPPLIED], extend the SUPPLY LINES to a height of 26-7/8" [683mm] +/- 1/8" [3mm] above the finished floor.

Slide the INLET ADAPTERS over the COPPER SUPPLIES to a height of 26-5/8" [675mm] +/- 1/8" [3mm] from the finished floor then solder the inner diameter of each ADAPTER to the SUPPLIES.

**IMPORTANT:** Ensure the SUPPLY LINES are level and free of any burrs.



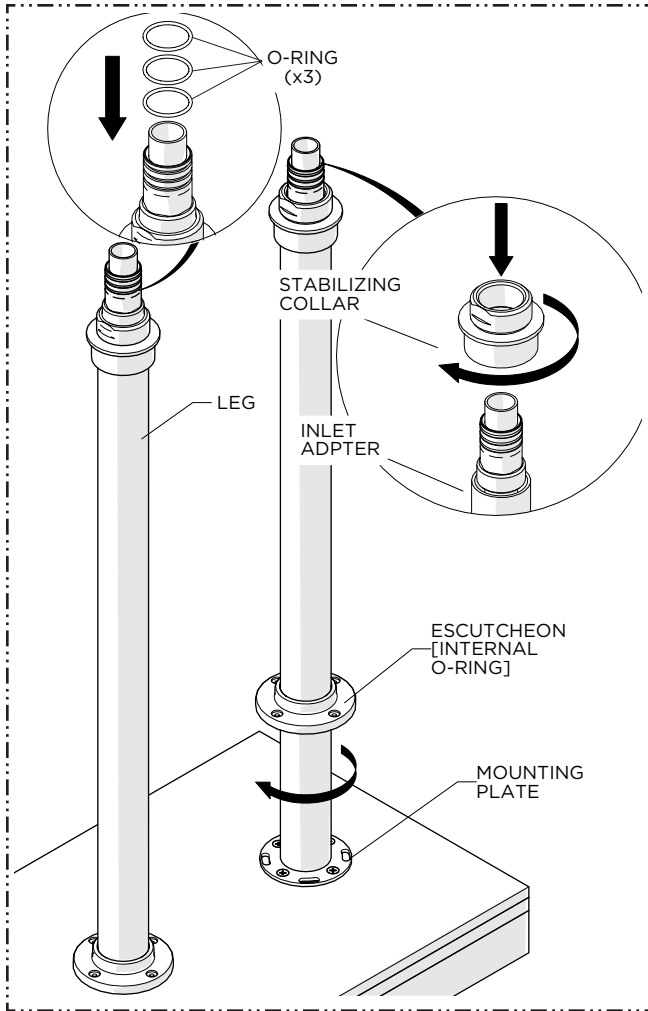
### NPT INSTALLATION:

3. Extend the SUPPLY LINES and install a 3/4" male NPT fitting† (not supplied) to a height of 25-3/8" [645mm] +/- 1/4" [6mm].
  - a. Ensure the SUPPLY LINES are level then thread and securely tighten the INLET ADAPTERS onto the NPT fittings.

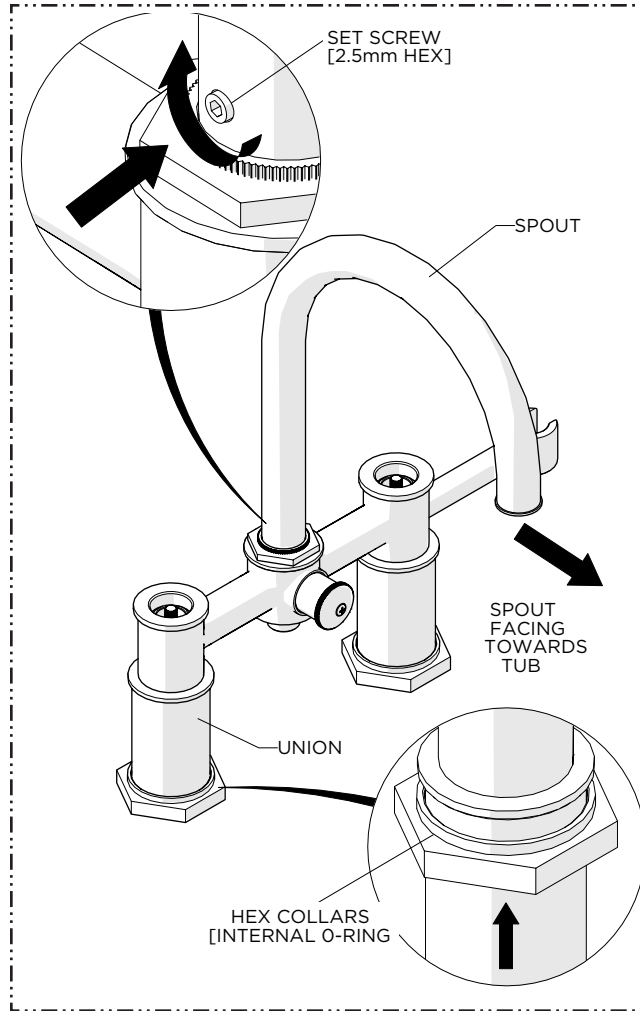
† For INTERNATIONAL USE ONLY, 3/4" Male NPT x 1/2" Female BSSP ADAPTERS and RUBBER WASHERS are provided.

# INSTALLATION GUIDELINES

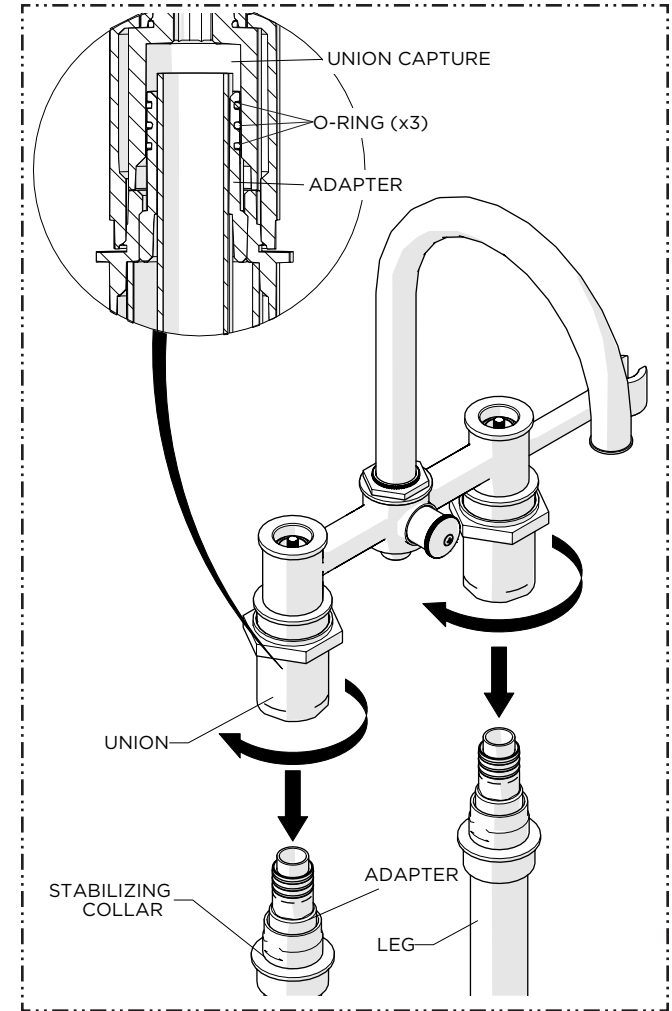
## FLOOR MOUNTED EXPOSED TUB FILLER



4. Slide the ESCUTCHEON up each LEG then:
- Slide the LEGS over the SUPPLY LINES.
  - Thread the LEGS to the MOUNTING PLATES.
  - Thread and securely tighten the STABILIZING COLLAR onto the INLET ADAPTERS.
  - Install the O-RINGS provided and apply grease using the package provided.



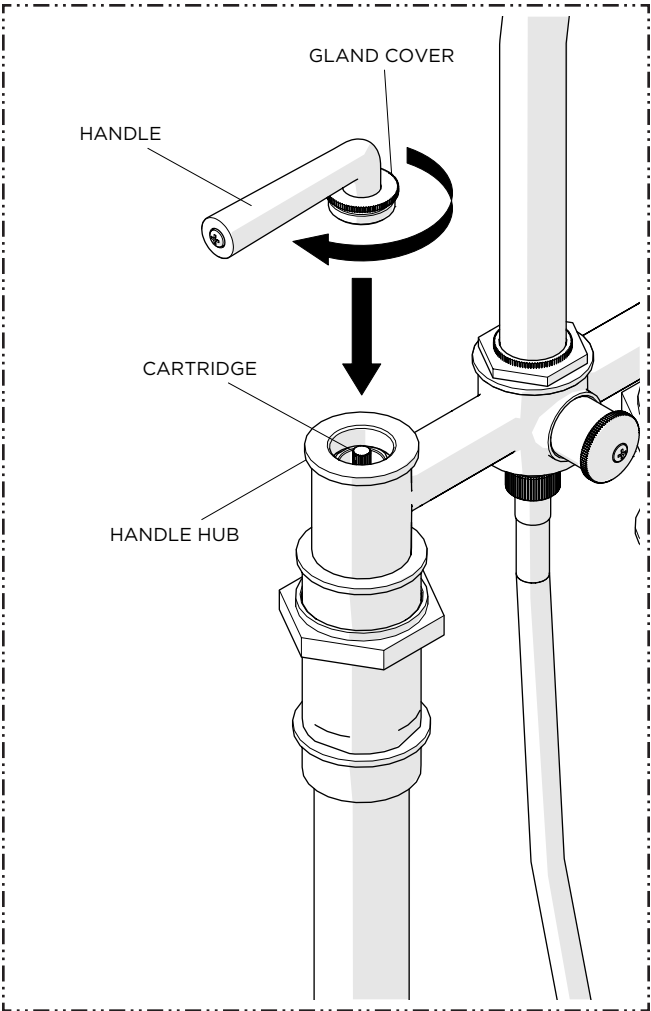
5. Align the SPOUT properly and securely tighten the SET SCREW at the base of the SPOUT then slide the HEX COLLARS up the UNIONS.
- NOTE:** The SPOUT is NOT intended to swivel. Ensure the SET SCREW is securely tighten.



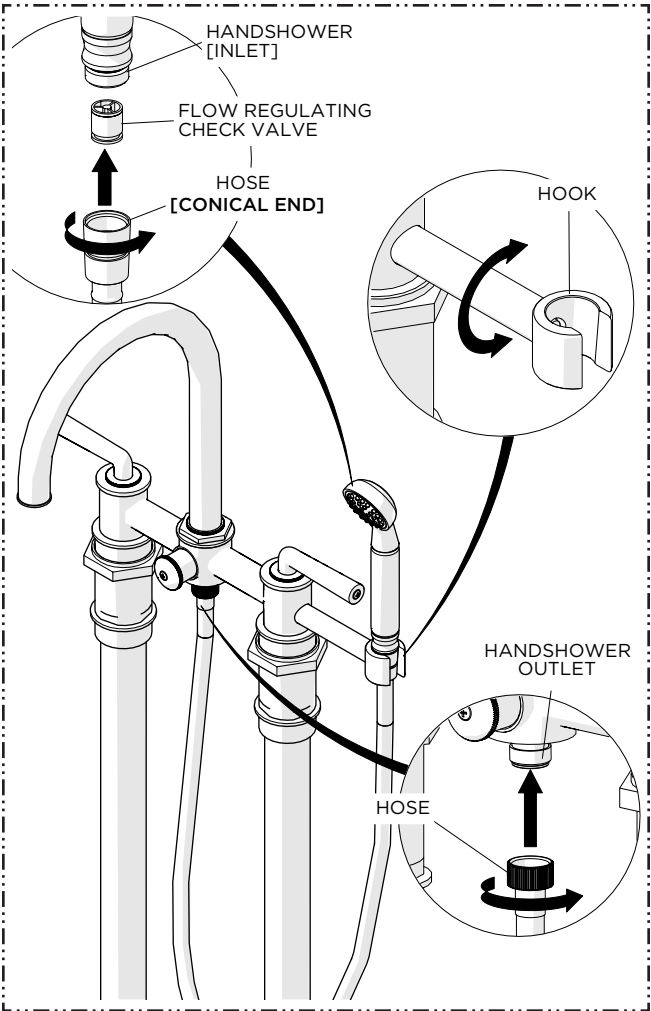
6. Slide the UNIONS over the INLET ADAPTERS then evenly thread the UNIONS onto the STABILIZING COLLARS until snug.

# INSTALLATION GUIDELINES

## FLOOR MOUNTED EXPOSED TUB FILLER



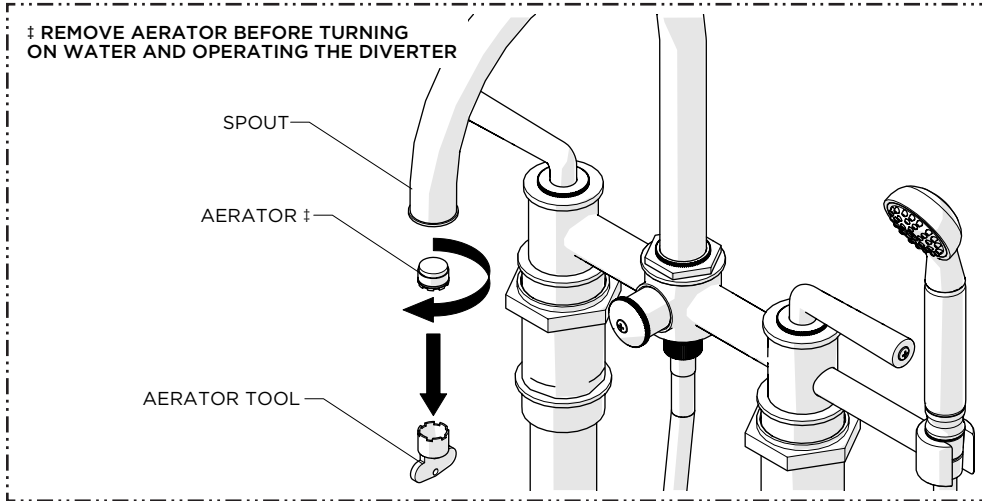
7. With the HANDLE held in the desired orientation, thread the GLAND COVER into the HANDLE HUB until snug.  
**NOTE:** LEVER HANDLES should be installed horizontally in the OFF position.



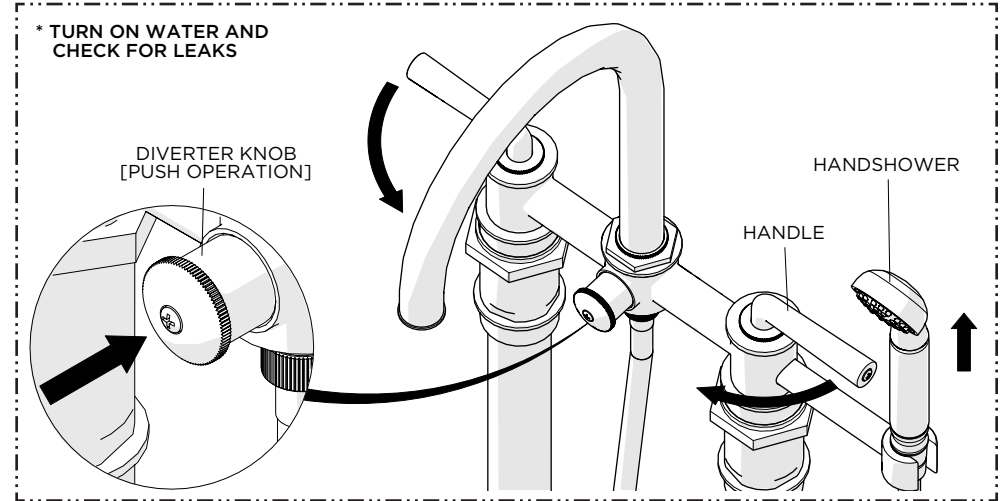
8. Thread and securely tighten the conical end of the HOSE to the HANDSHOWER and the knurled end of the HOSE to the HANDSHOWER OUTLET at the base of the SPOUT then place the HANDSHOWER into the HOOK.  
**NOTE:** A FLOW REGULATING CHECK VALVE is located inside the inlet of HANDSHOWER.

# INSTALLATION GUIDELINES

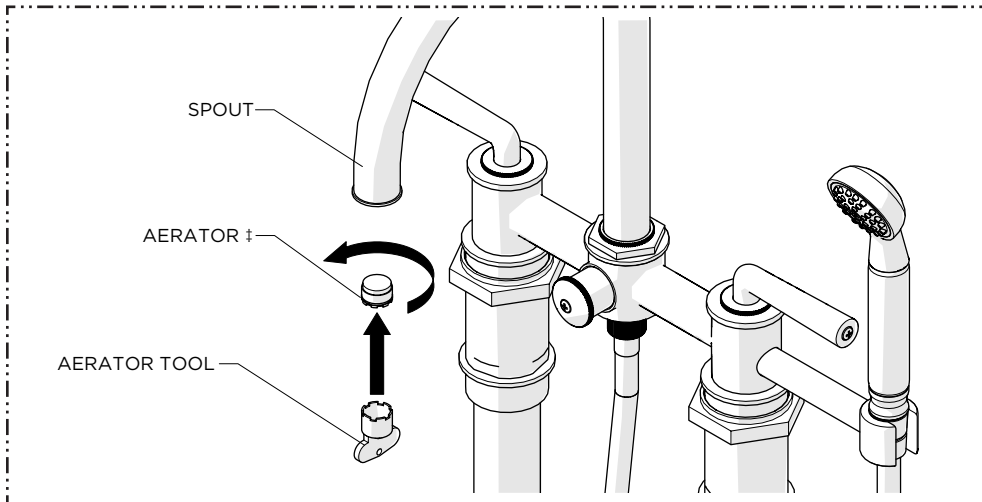
## FLOOR MOUNTED EXPOSED TUB FILLER



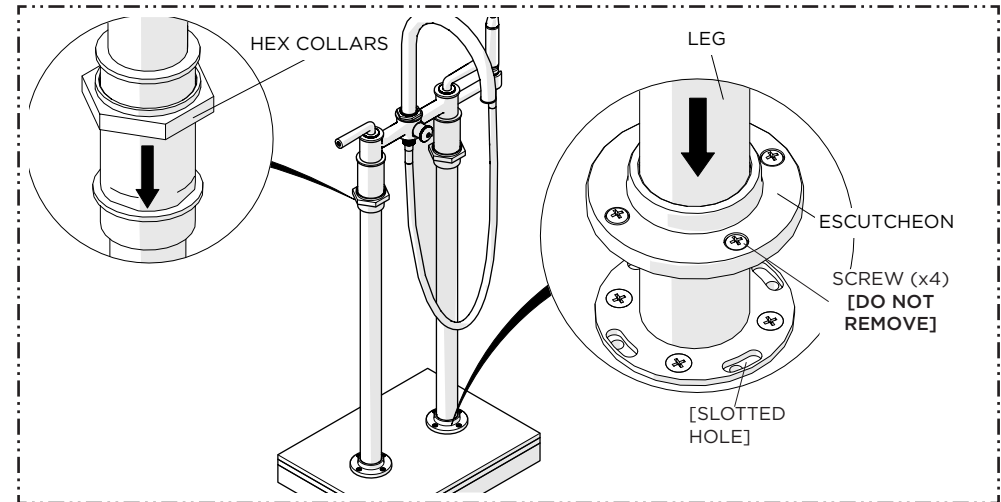
9. Remove the AERATOR using the AERATOR TOOL provided BEFORE turning on the water and diverting water to the HANDSHOWER.



10. Turn on the water to flush out the supply lines, operate the HANDLES and DIVERTER KNOB to ensure they function properly, and carefully inspect all connections for leaks then turn off the water.



11. Re-install the AERATOR.

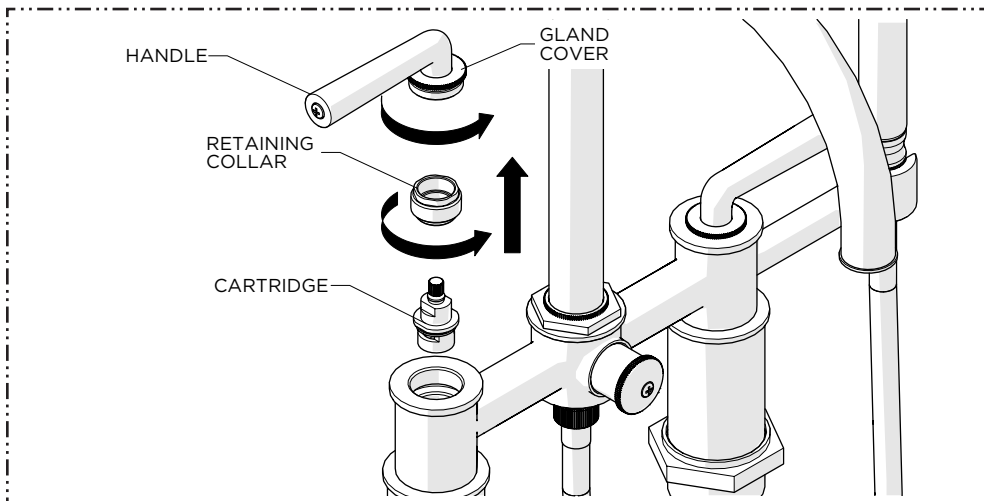


12. Slide the HEX COLLARS down the UNIONS then slide the ESCUTCHEONS down the LEGS until they contact the finished floor,

**NOTE:** The SCREWS on the ESCUTCHEONS are decorative and must align with the slotted holes on the MOUNTING FLANGE to fit properly.

# SERVICE GUIDELINES

## FLOOR MOUNTED EXPOSED TUB FILLER



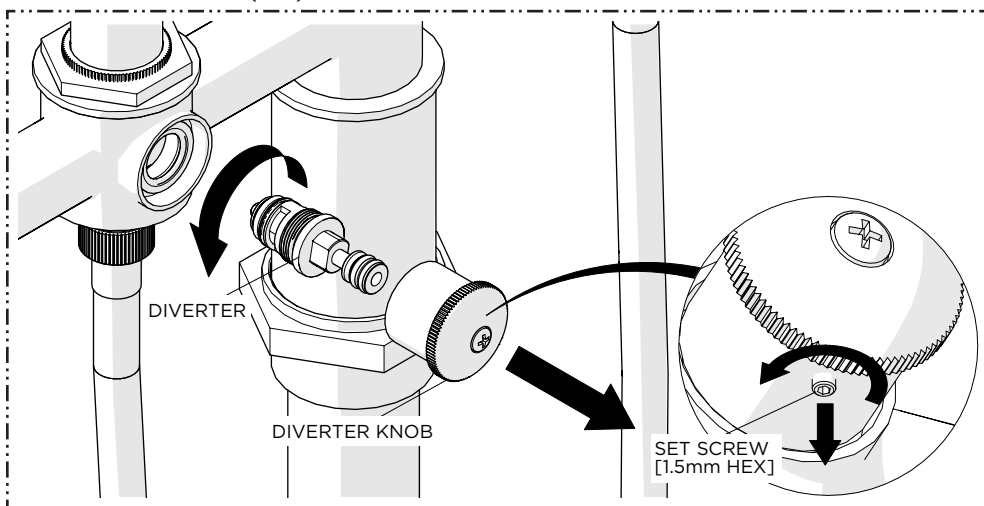
### SERVICING THE CARTRIDGE:

1. Unthread the GLAND COVER to remove the HANDLE, unthread and remove the RETAINING COLLAR, then remove the CARTRIDGE.

**NOTE:** Replacement CARTRIDGES can be ordered separately.

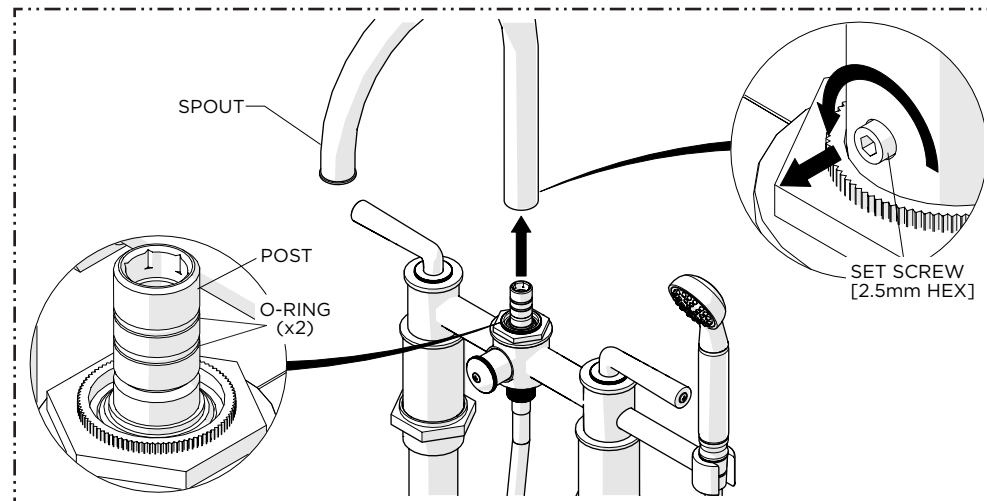
STYLE No. 100605 (Cold)

STYLE No. 100604 (Hot)



### SERVICING THE DIVERTER:

1. Loosen the SET SCREW (1.5mm HEX) then remove the KNOB to expose the DIVERTER. Unthread and remove the DIVERTER using a wrench.



### SERVICING THE SPOUT:

1. Loosen, but do **NOT** remove, the SET SCREW (2.5mm HEX) at the base of the SPOUT then remove the SPOUT to expose the POST and external O-RINGS.