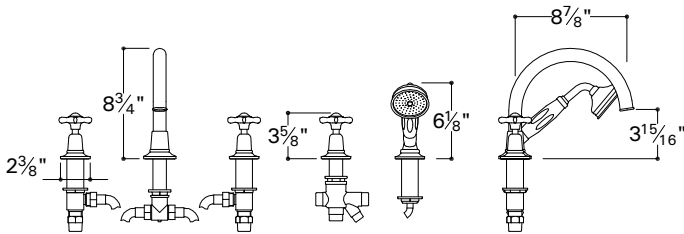


**CLASSIC CONCEALED GOOSENECK TUB FILLER WITH HANDSHOWER AND DIVERTER**

- EATU51** (cross handles)
- EATU52** (metal lever handles)
- EATU53** (white porcelain lever handles)
- EATU54** (black porcelain lever handles)
- EATU55** (oak lever handles)



EATU52	EATU53 ,54, 55

- An access panel is required for future servicing.
- Refer to the specification and assembly drawings attached. Faucet is sold partially assembled but shown fully disassembled for illustrative and service purposes only.
- Inspect this product to assure you have all parts required for proper installation.
- Use only a strap wrench or protected/smooth-jaw wrench on any finished surface.
- Install accessible hot and cold service stop valves to facilitate servicing.

**IMPORTANT:**

Run 3/4" hot and cold supply lines for maximum flow. The hot and cold supplies must be routed to the diverter. Water mixes in the 2-way diverter and can be directed to either the handshower hose or the single flexible hose to the tub spout.

These instructions include information for installing the optional handshower and diverter. If the handshower and diverter are not being used, some of the information included below and in the exploded view drawing is not applicable.

**SIDE VALVE INSTALLATION**

1. With the lock nut (4b) and lower sealing gasket (4a) installed on the side valve (5-5b), insert the side valve into the hole in the mounting surface so at least 1" of threads are exposed above the deck surface.
2. Place the upper sealing gasket (3a) onto the side valve then thread the base escutcheon (3) onto the side valve.
3. Thread the handle assembly (1-1h) onto the side valve until it stops. Hand tight is adequate; if this assembly is too tight, the handle will bind.
4. Unthread the base escutcheon (3) until it contacts the gland nut (1e) which will assure proper side valve height.
5. Tighten the lock nut (4b) up against the underside of the mounting surface to secure the side valve.

**IMPORTANT**

- To ensure this product is installed properly, you must read and follow these guidelines.
- The owner/user of the tub filler must keep this information for future reference.
- Be sure your installation conforms to local codes. Antiscald protection is the responsibility of the installer and according to applicable codes.
- This tub filler should be on-site prior to rough in and allows the installer to visualize the installation and verify the center spread.
- Check tub deck and tub measurements to assure the spout projects far enough into the tub.

These guidelines have been prepared for the professional contractor to aid in the installation of: **EASTON CLASSIC CONCEALED GOOSENECK TUB FILLER WITH CROSS HANDLES (EATU51) & LEVER HANDLES (EATU52, 53, 54, 55) WITH HANDSHOWER AND DIVERTER.**

All dimensions are based on original specification and are subject to change and variation. Please consult your Design Associate for current specifications.

W A T E R W O R K S

6. Repeat these steps to install the second side valve.

**SPOUT INSTALLATION**

- 7. Unthread the locking nut (9f) and lower washer (9e) from the spout.
- 8. Insert the spout assembly (9-9d) through the hole in the mounting surface with the upper washer (9d) positioned under the spout base.
- 9. Reinstall the lower washer (9e) and tighten the locking nut (9f) to secure the spout to the mounting surface.

**2-WAY DIVERTER INSTALLATION (OPTIONAL)**

Note: Water mixes in the 2-way diverter and can be directed to the handshower hose (13,14) or the single flexible hose (11c) to the tub spout by turning the diverter knob.

- 10. With the lock nut (10c) and lower sealing gasket (10b) installed on the diverter insert the diverter into the hole in the mounting surface so at least 1" of threads are exposed above the deck surface .
- 11. Place the upper sealing gasket (10a) onto the diverter then thread the base escutcheon (10) onto the diverter.
- 12. Thread the handle assembly onto the diverter until it stops. Hand tight is adequate; if this assembly is too tight, the handle will bind.
- 13. Unthread the base escutcheon (10) until it contacts the gland nut which will assure proper side valve height.
- 14. Tighten the lock nut (10c) up against the underside of the mounting surface to secure the diverter.

**HANDSHOWER INSTALLATION (OPTIONAL)**

- 15. Unscrew the locking nut (16) from the all-thread (15a) and remove the lower washer (16a).
- 16. Unscrew the cover ring (15c) from the all-thread and pull out the plastic guide sleeve (15b).
- 17. Insert the all thread through the mounting surface, leaving the escutcheon (16c), and upper washer (16b) in place.

18. Re-attach the lower washer and locking nut to the all-thread. Fully tighten the locking nut to secure the assembly.

19. Slide the cover ring (15c) over the conical end of the hose and insert the hose into the plastic guide sleeve (15b). Now pass the knurled end of the hose through the all thread until the plastic guide is fully seated inside of the all-thread. Thread the cover ring back on to the all-thread.

20. Connect the conical end of the hose to the hand shower. Note: the combination flow restrictor/non-return valve (17) is located in the end of the handshower.

**FINAL CONNECTIONS AND INSPECTION (PORTIONS OPTIONAL)**

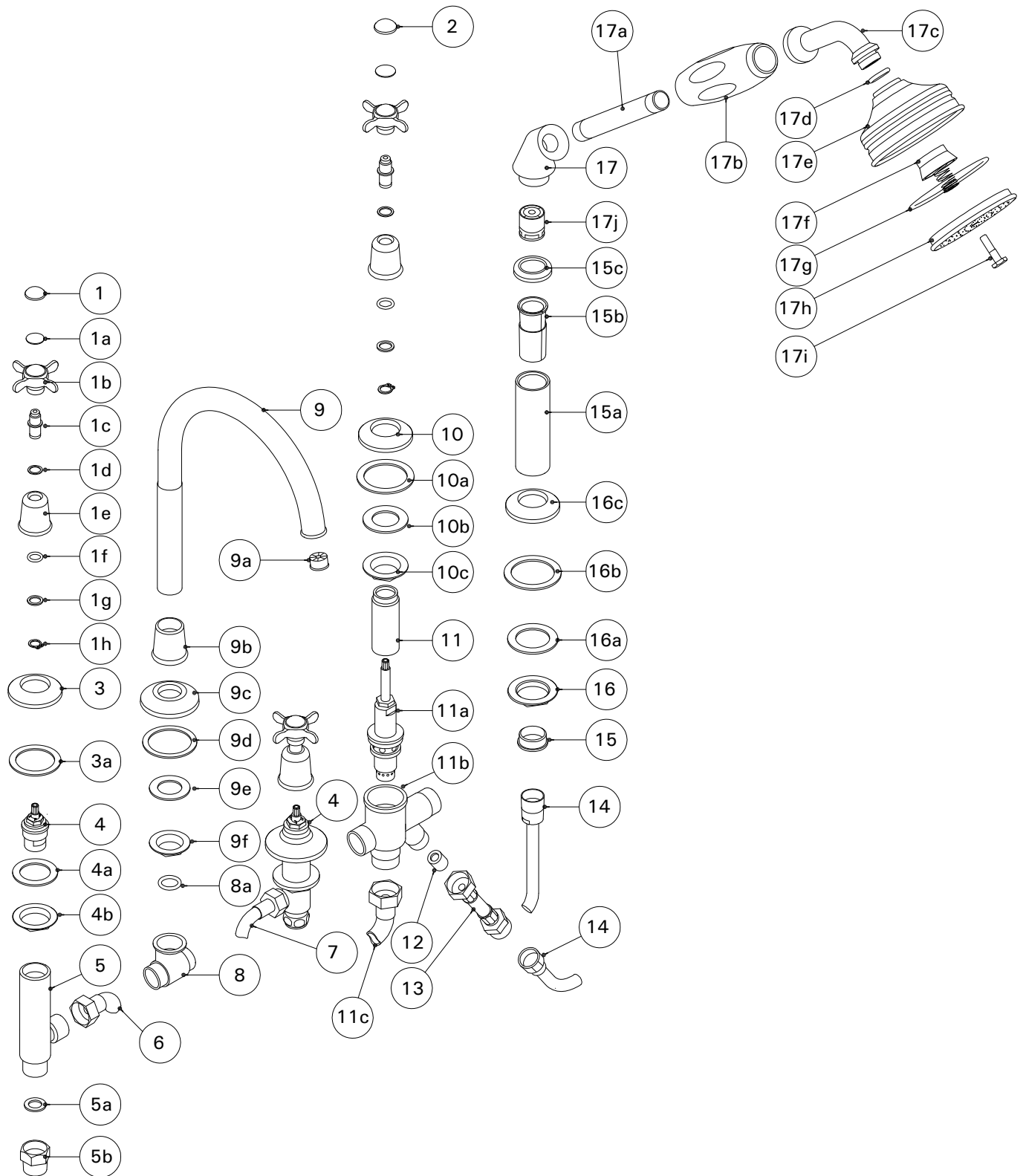
- 21. Connect each of the supply hoses to the proper inlet marked on the 2-way diverter making sure the hoses are not kinked.
- 22. Connect the spout to the 3/4" outlet on the diverter using the hose (11c) provided. You must remove the spout tee (8) and connect directly on spout shank.
- 23. Connect the female end of the 23" handshower hose (13) to the diverter outlet.
- 24. Connect the knurled end of the second handshower hose (14) to the male end of the 23" flex hose (13).
- 25. Open the hot and cold valves to flush out any debris in the supply lines before transferring the flow of water to the hand shower.
- 26. Carefully inspect all connections for leaks and check for proper operation before enclosing the unit.
- 27. To service the valve stem, unscrew the gland nut (1e) and pull off the handle assembly.

If further assistance is required, please contact Product Support at 1-800-927-2120 (8am-7pm EST)

These guidelines have been prepared for the professional contractor to aid in the installation of: **EASTON CLASSIC CONCEALED GOOSENECK TUB FILLER WITH CROSS HANDLES (EATU51) & LEVER HANDLES (EATU52, 53, 54, 55) WITH HANDSHOWER AND DIVERTER.**

All dimensions are based on original specification and are subject to change and variation. Please consult your Design Associate for current specifications.

W A T E R W O R K S



These guidelines have been prepared for the professional contractor to aid in the installation of: **EASTON CLASSIC CONCEALED GOOSENECK TUB FILLER WITH CROSS HANDLES (EATU51) & LEVER HANDLES (EATU52, 53, 54, 55) WITH HANDSHOWER AND DIVERTER.**

All dimensions are based on original specification and are subject to change and variation. Please consult your Design Associate for current specifications.

W A T E R W O R K S

PARTS TABLE		
ITEM NO.	DESCRIPTION	QTY.
1	INDICE, HOT	1
1a	PAD,ADHESIVE	2
1b	HANDLE, CROSS	2
1c	SHAFT, HANDLE	2
1d	WASHER, NYLON	2
1e	GLAND NUT	2
1f	O-RING	2
1g	WASHER, BRASS	2
1h	C-CLIP	2
2	INDICE, BLANK	1
3	ESCUTCHEON, FLAT	2
3a	GASKET, RUBBER	2
4	CARTRIDGE, HOT and COLD	2
4a	GASKET, RUBBER-SIDE VALVE	
4b	NUT, SIDE VALVE	2
5	SIDE VALVE BODY	2
5a	WASHER, INLET	2
5b	NUT, SIDE VALVE INLET	2
6	HOSE, FLEXIBLE INLET	1
7	HOSE, FLEXIBLE INLET	1
8	TEE	1
8a	O-RING, TEE/SPOUT SEAL	1
9	SPOUT	1
9a	AERATOR	1
9b	ESCUTCHEON, BELL-SPOUT	1
9c	ESCUTCHEON, FLAT-SPOUT	1
9d	GASKET, RUBBER-SPOUT	1
9e	GASKET, RUBBER-SPOUT;LOWER	1
9f	NUT, SPOUT MOUNTING	1
10	ESCUTCHEON, FLAT-DIVERTER	1
10a	GASKET, RUBBER-DIVERTER;UPPER	1
10b	GASKET, RUBBER-DIVERTER;LOWER	1
10c	NUT, DIVERTER MOUNTING	1
11	HOUSING, DIVERTER SHAFT	1
11a	CARTRIDGE, DIVERTER	1
11b	DIVERTER BODY	1
11c	HOSE, MIXED WATER;TUB SPOUT	1
12	BACK FLOW PREVENTER	1
13	HOSE, 23"-HANDSHOWER	1
14	HOSE, SECONDARY-HANDSHOWER	1
15	INSERT,PLASTIC	1
15a	ALL-THREAD	1
15b	SLEEVE, PLASTIC	1
15c	COVER RING, THREADED	1

PARTS TABLE		
ITEM NO.	DESCRIPTION	QTY.
16	NUT, HS RETURN;MOUNTING	1
16a	GASKET, RUBBER-HS RETURN; LOWER	1
16b	GASKET, RUBBER-HS RETURN	1
17	ELBOW, HS BASE	1
17a	SHAFT, HS HANDLE	1
17b	HANDLE, HS	1
17c	ELBOW, HS HEAD	1
17d	O-RING	1
17e	HS HEAD	1
17f	FITTING, THREADED	1
17g	O-RING	1
17h	HS FACE	1
17i	NUT, HS FACE	1
17j	FLOW REGULATING CHECK VALVE	1

These guidelines have been prepared for the professional contractor to aid in the installation of: **EASTON CLASSIC CONCEALED GOOSENECK TUB FILLER WITH CROSS HANDLES (EATU51) & LEVER HANDLES (EATU52, 53, 54, 55) WITH HANDSHOWER AND DIVERTER.**

All dimensions are based on original specification and are subject to change and variation. Please consult your Design Associate for current specifications.

W A T E R W O R K S