

PRODUCT CODE

WCI-01

OVERVIEW

Ultralight™ is a specialized composite board designed for floor heating applications. Manufactured as flat, flexible, sheets they are water and mold resistant. The top surface incorporates a heat spreading aluminum layer combined with non-woven fleece.

The core of PEF insulation provides thermal separation from the floor beneath, ensuring a rapid thermal response of a heated layer of tiles or leveling compound above.

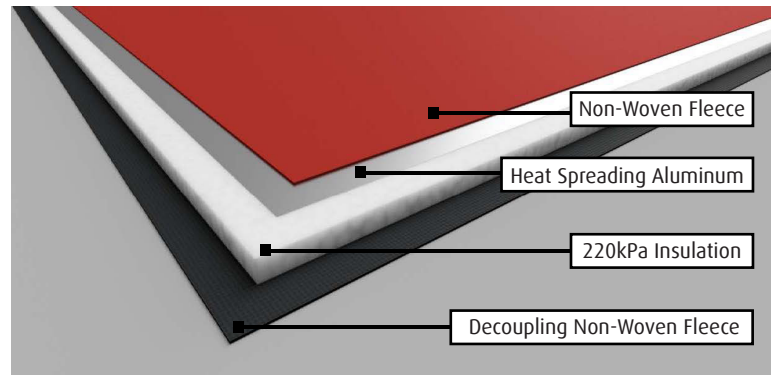
The rapid thermal response promoted by the PEF insulation and diffusion layer allows the flooring to heat up faster, resulting in a more energy-efficient and comfortable heated floor.

The base layer of non-woven fleece functions as a high-performance anti-fracture membrane for tile and stone floor coverings. It also facilitates a high-strength mechanical bond.

FEATURES & BENEFITS

**69% Energy Savings during Heat Up +
12% Energy Savings during the Heat Cycle =
Savings of \$1/sqft per Year in Electrical Costs**

- 3-in-1: Insulating, Heat Spreading, Decoupling
- The heat spreading aluminum layer **improves comfort and reduces running costs**. This enabled the floor to achieve the same comfort temperature with 12% less energy
- PEF insulation layer **reduces heat up times by 76 minutes** on slabs and reduces energy used during heat up by 69%
- Decoupling fleece layer provides high performance **protection against tiles cracking** due to lateral subfloor movement in accordance with ANSI A118.12 standard
- Ultralight weighs just over 1lbs per board making it much **lighter and easier to carry** than standard cement-based tile insulation and backer boards and it is more durable due to the high strength composite design meaning it **wont break if bent or dropped**
- Ultralight achieved **Heavy Commercial rating** when used with large format tiles (600 mm x 600 mm) and Light Commercial rating when used with standard tiles (300 mm x 300 mm), in accordance with ASTM-C627 (Robinson Test)
- The lightweight composite design makes it **easier to cut** curves and complex shapes, compared with cement-based tile insulation and backer boards and will not dull knife blades
- Ultralight will not crumble, dent, or create dust when cutting or kneeling on the boards which means **no dust to clean or breathe in during installation**



TECHNICAL DATA

Technical Specifications - Ultralight

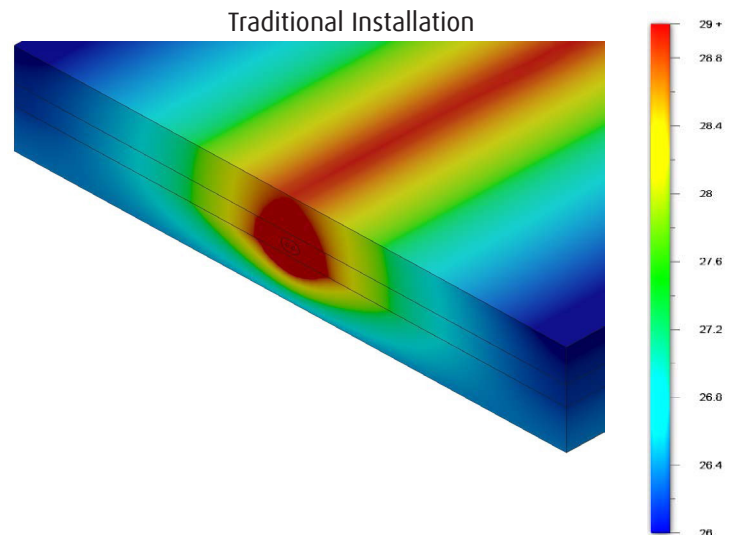
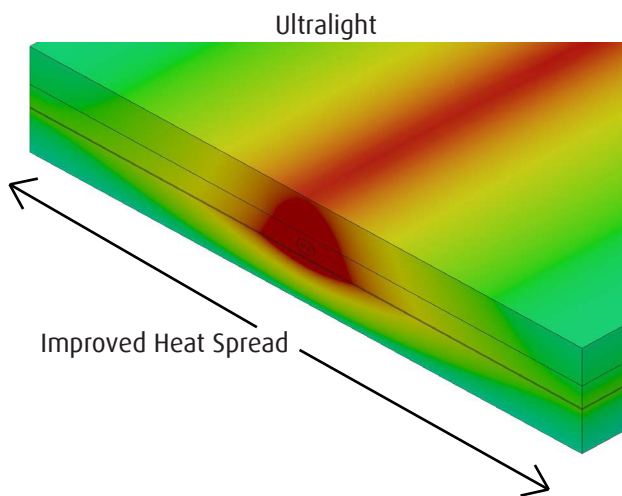
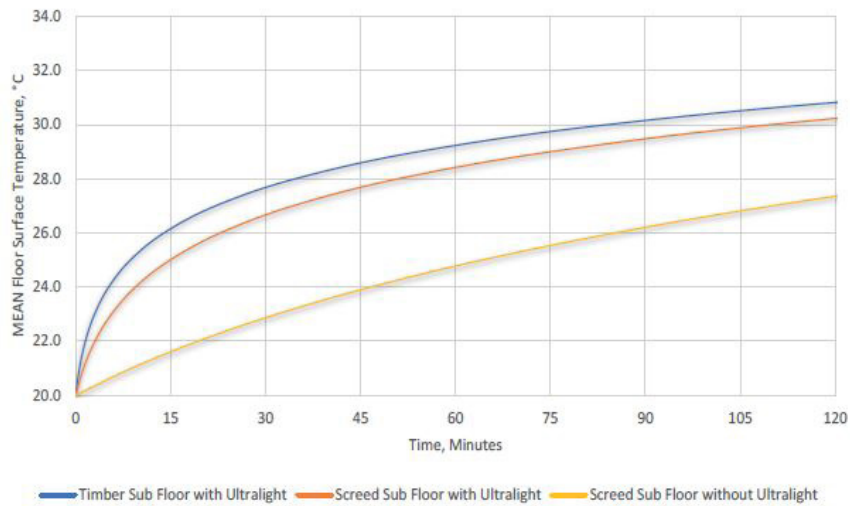
Product Code	WCI-01
Pack Size	1 board
Composition	Non-Woven Polypropylene Fleece Aluminium Extruded Polyethylene Foam Non-Woven Polypropylene Fleece
Thickness	1/4" / 6 mm
Dimensions	2' x 4' / 610 mm x 1219 mm
Area	8 sf / .75m ²
Weight of Board	1.43 lbs / 0.86 kg
Thermal Resistance	0.630°F · ft ² · h/BTU / 0.111 m ² /W
Thermal Conductivity	0.031 BTU/F · ft · h / 0.054 W/mK
Release of Dangerous Substances	SVHC ≤ 0.1% w/w
Compressive Strength, 10% Compression	32 psi / 220 kPa
Point Loading, tiled	≥ 500 lb/ft-lb / ≥ 2.2 kN
Robinson test, 100-199 mm tile	Domestic
Robinson test, 200-599 mm tile	Light Commercial
Robinson test, ≥ 600 mm tile	Heavy Commercial
7 Day Shear Strength	113 psi (780 kPa)
Crack Resistance (Anti-Fracture/Decoupling)	≥ 1/8" => High Performance
Long Term Water Absorption	0.052% w/w
Water Vapor Permeability	9.12 mg/m ² h
Mold Growth	Does not support mold growth
Reaction to Fire	Euroclass E
Warranty	10 year

HEAT SPREAD

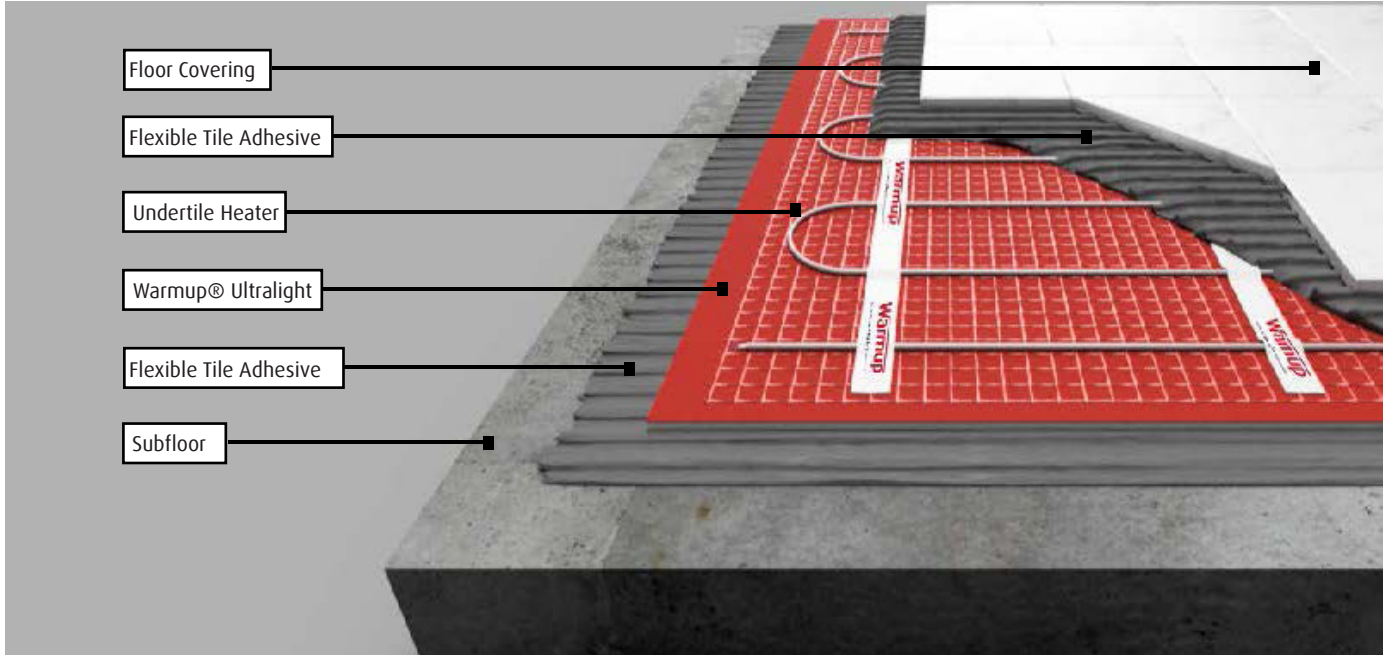
Accelerates lateral heat spread for more even heat in less time

Response Time Improvement - Ultralight

Tiles over eUFH @ 150W/m²



FLOOR BUILD UP



TECHNICAL SUPPORT

Warmup is available 24/7/365 at (888) 927-6333.

For quotes, layouts and specific technical information, contact us at:

Warmup USA

(888) 927-6333

us@warmup.com

Warmup CANADA

(888) 592-7687

ca@warmup.com

RELATED PRODUCTS

- Heating Mat - DWM - see WSC-0720
- DCM-PRO Cable - see WSC-0816
- DCM-PRO Peel-and-Stick Membrane - see WSC-1001