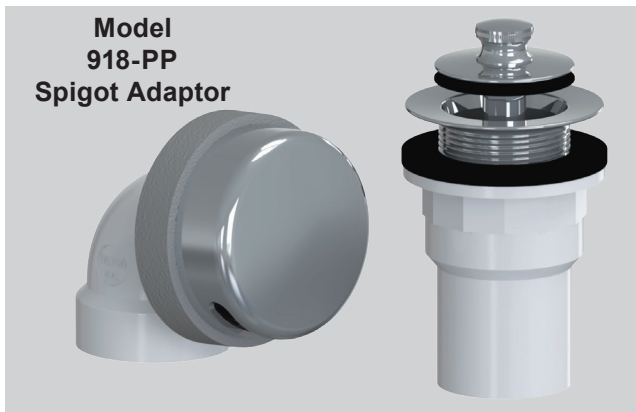


Schedule 40

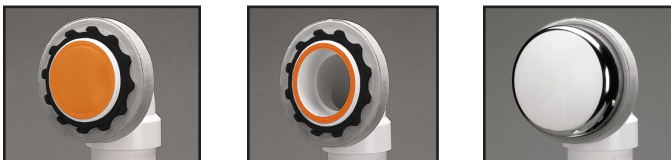


Model
915-PP
Hub Adaptor

Model 917-PP
Drain Tee



Model
918-PP
Spigot Adaptor



Includes built-in
test membrane

Easily remove
membrane after test

Snap-on
overflow plate.
No screws



ADA

PRESFLO® (PF)
Foot Actuated (FA) only

See price list for complete item numbers and available options.

When ordering, please specify complete item number and any applicable option codes.



For More Information Contact:
WATCO Manufacturing Company
1220 South Powell Road
Independence, MO 64057-2724
Ph. 816-796-3900 • FAX 816-796-0875
www.watcomfg.com

Innovator® 915

Half Kit with Hub Adaptor

Innovator® 917

Half Kit with Drain Tee

Innovator® 918

Half Kit with Spigot Adaptor, PVC only

Sturdy 1.5" Schedule 40 Fittings
Solvent Weld Assembly

SPECIFICATIONS

FEATURES:

- Eliminates all screws
- Eliminates need for separate overflow test plug
- Eliminates leaks due to loose overflow attachment
- Eliminates dual inventory of one- and two-hole overflow plates

Approvals (915 models):

- IAPMO (UPC) approved, File 2255.
- Complies with ASME A112.18.2-2005/
CSA B125.2-05.

Patents (Innovator®):

- <https://www.watcomfg.com/patents/>

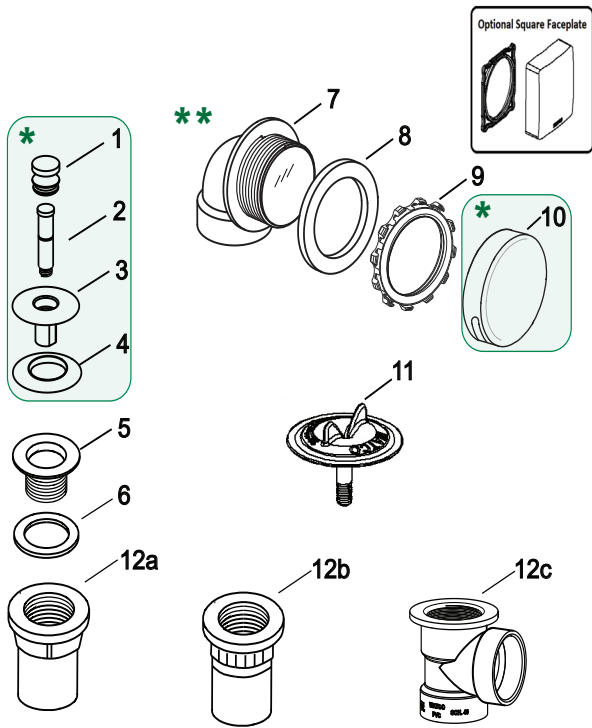
Threads (Strainer Body and Drain Elbow):

- 1½" – 11½ NPSM (Coarse Thread)
- 1.865" Major Diameter (outside thread diameter)
- 11.5 threads per inch

PIPING: PVC ABS

Finishes Available in the 915/917/918 Series:

Finishes Available in the 915/917/918 Series:	Tub Closure:	PUSH PULL®	LIFT & TURN	PRESFLO®	FOOT ACT.
AP - Aged Pewter	•	•	•	•	•
BB - Brushed Bronze	•	•	•	•	•
BN - Brushed Nickel	•	•	•	•	•
BO - Bone	•	•	•	•	•
BS - Biscuit	•	•	•	•	•
BZ - Oil-Rubbed Bronze	•	•	•	•	•
CB - Chrome Brushed	•	•	•	•	•
CP - Chrome Plated	•	•	•	•	•
NP - Nickel Polished	•	•	•	•	•
PB - Polished Brass	•	•	•	•	•
WH - White	•	•	•	•	•
WI - Wrought Iron	•	•	•	•	•

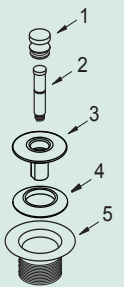
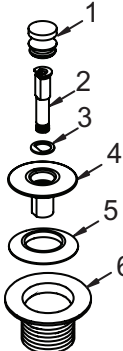
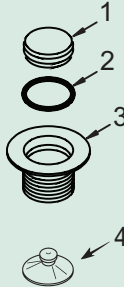
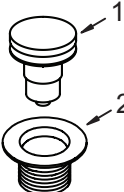


Parts Bag #11810-__: #6, #8, #9, and #10

** RI: (example: 915-PPRI) Parts #5 thru #9, and #11 thru

Item	Part #	Description
1	01010CP	PUSH PULL® Knob, Brass
2	11584	Friction Ring (11504) and Post (11508)
3	01013CP	Stopper, Brass
4	11507	Seal, 1-1/16" dia.
5	01016CP	Strainer Body, 1.865" - 11.5 - 1-1/4"
6	10696	Drain Ell Washer, 1.5" gray
7	11020	Innovator® Overflow Ell, Schedule 40, ABS
	14020	Innovator® Overflow Ell, Schedule 40, PVC
8	10675	Overflow Ell Washer, Foam
9	11121	Retainer Nut for Innovator®
	11127	Square Retainer Nut for Innovator®
10	01005CP	Overflow Plate for Innovator®
	01007CP	Square Overflow Plate for Innovator®
11	11577	Test Plug with O-Ring-type Gasket
for the 915:		
12a.	11608	Hub, Schedule 40, ABS
	11607	Hub, Schedule 40, PVC
for the 918:		
12b.	11610	Spigot, Schedule 40, PVC only
for the 917:		
12c.	11027	Direct Drain Tee, Schedule 40, ABS
	14027	Direct Drain Tee, Schedule 40, PVC

OPTIONAL TUB CLOSURES FOR 915/917/918-SERIES BATH WASTES (PUSH PULL® ALSO SHOWN ABOVE)

PUSH PULL® Coarse Thread	LIFT & TURN Coarse Thread	PRESFLO® Coarse Thread	FOOT ACTUATED Coarse Thread
 <ol style="list-style-type: none"> 01010CP 01010__* 11584 01013CP 01013__* 11507 01016CP 01016__* 	 <ol style="list-style-type: none"> 01010CP 01010__* 11079 11088 11290CP 01013__* 11507 11492CP 01016__* 	 <ol style="list-style-type: none"> 11145CP 11145__* 11132 11060CP 11060__* 96039: Suction Cup for removing stopper 	 <ol style="list-style-type: none"> 38412-CP 38412__* 11492CP 01016__*

*If finish other than Chrome is desired, please use this part number and indicate desired finish.

917 ROUGH-IN (RI) and STOPPER/FACEPLATE (SF)

ROUGH-IN'S

(example: 917-PPRI-PVC-CP)
All parts, including strainer body,
except the overflow plate and
stopper assembly

STOPPER/FACEPLATE'S

(example: 900-PPSF-0-CP)
Overflow plate and stopper assembly

