

# Dimensional Document

## Viega MegaPress® Branch Connector

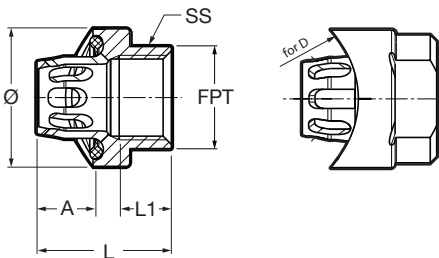


This document is subject to updates. For the most current Viega technical literature please visit [www.viega.us](http://www.viega.us).



Viega products are designed to be installed by licensed and trained plumbing and mechanical professionals who are familiar with Viega products and their installation. **Installation by non-professionals may void Viega LLC's warranty.**

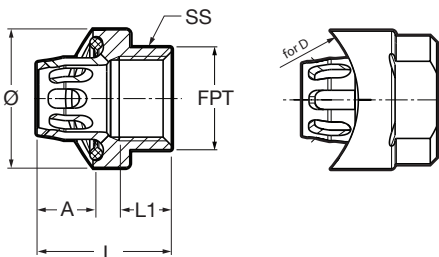
### Viega Megapress Branch Connector for Schedule 10 pipe, carbon steel – Models 4812.2/4812.3



Part No. FKM	Part No. EPDM	for D (in)	FPT (in)	A (in)	L (in)	L1 (in)	Ø (in)	SS (in)
26800	26860	1½	¾	0.44	0.56	1.65	1.69	1.25
26805	26865	2	¾	0.47	0.56	1.65	1.69	1.25
26810	26870	2½	¾	0.48	0.56	1.65	1.69	1.25
26815	26875	3	¾	0.50	0.56	1.65	1.69	1.25
26820	26880	4	¾	0.53	0.56	1.65	1.69	1.25
26825	26885	6	¾	0.54	0.56	1.65	1.69	1.25

Ø = diameter  
SS = wrench size

### Viega Megapress Branch Connector for Schedule 40 pipe, carbon steel – Models 4812.25/4812.35



Part No. FKM	Part No. EPDM	for D (in)	FPT (in)	A (in)	L (in)	L1 (in)	Ø (in)	SS (in)
26830	26890	1½	¾	0.37	0.56	1.65	1.69	1.25
26835	26895	2	¾	0.41	0.56	1.65	1.69	1.25
26840	26900	2½	¾	0.39	0.56	1.65	1.69	1.25
26845	26905	3	¾	0.37	0.56	1.65	1.69	1.25
26850	26910	4	¾	0.39	0.56	1.65	1.69	1.25
26855	26915	6	¾	0.35	0.56	1.65	1.69	1.25

Ø = diameter  
SS = wrench size

**Viega LLC**  
585 Interlocken Blvd.  
Broomfield, CO 80021

Phone (800) 976-9819  
[www.viega.us](http://www.viega.us)

DD-MP 1218 Branch Connector

