



T&S BRASS AND BRONZE WORKS, INC.
 2 SADDLEBACK COVE / P.O. BOX 1088 / TRAVELERS REST, SC 29690
 PHONE 800-476-4103 FAX 864- 834-3518



Model No.

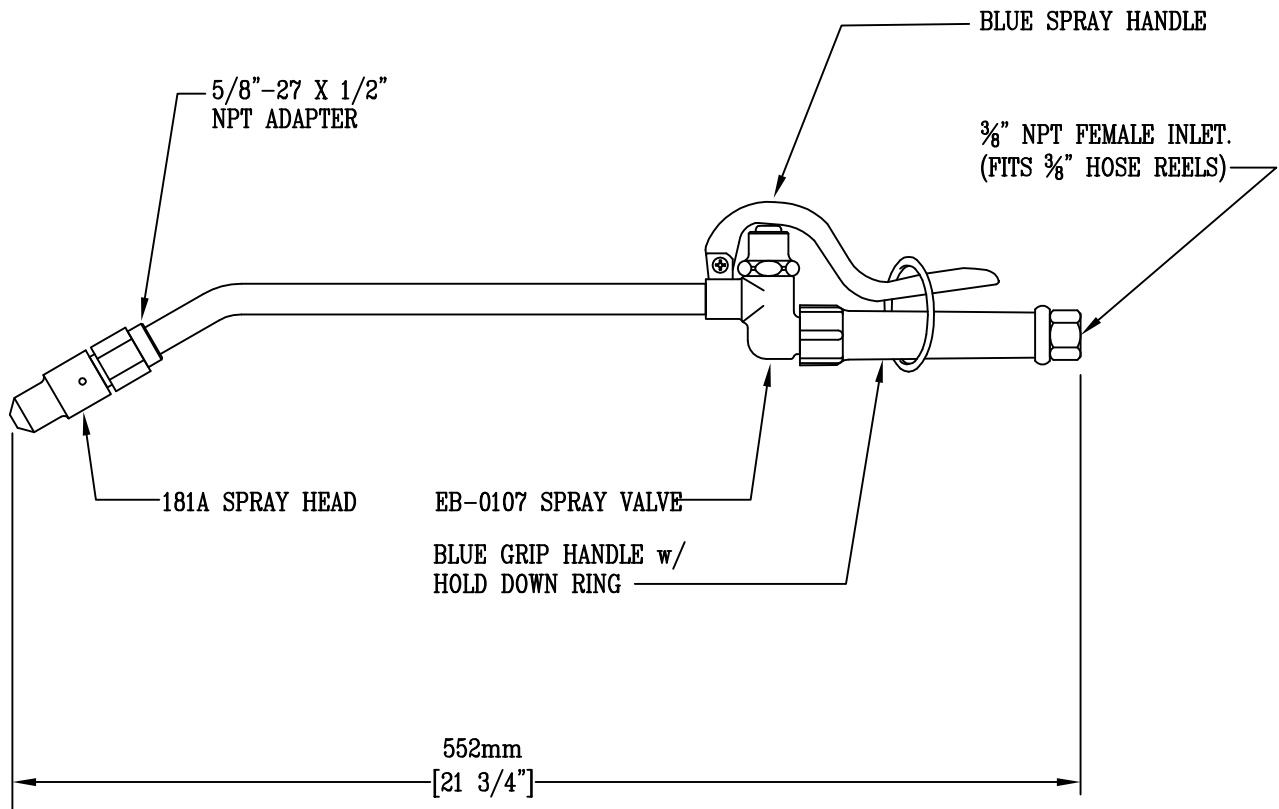
EB-2322

Item No.:

Job Name:

Architect/Engineer Approval:

Notes:



Product Description:
 EXTENSION SPRAY VALVE UNIT WITH
 SELF-CLOSING SQUEEZE VALVE, EXTENDED
 HANDLE, & REMOVABLE SPRAY HEAD

Drawn:

WJS

Checked

JRM

Scale:

1 : 4

Approved

JHB

Date:

09/26/06