



T&S BRASS AND BRONZE WORKS, INC.

2 Saddleback Cove / P.O. Box 1088
Travelers Rest, SC 29690

Model No.

BL-6050 SERIES

Item No.

Travelers Rest, SC: 800-476-4103 • Simi Valley, CA: 800-423-0150 • Fax: 864-834-3518 • www.tsbrass.com

BL-6050 SERIES

BL-6050-0	Multi-Water Fixture w/2 Serrated Stops @ 90°
BL-6050-01	Multi-Water Fixture w/1 Serrated Stop
BL-6050-02	Multi-Water Fixture w/2 Serrated Stops @ 180°



This Space for Architect/Engineer Approval

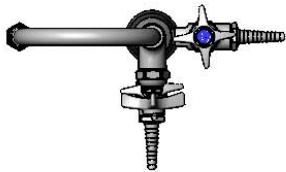
Job Name _____ Date _____

Model Specified _____ Quantity _____

Customer/Wholesaler _____

Contractor _____

Architect/Engineer _____



BL-6050-0

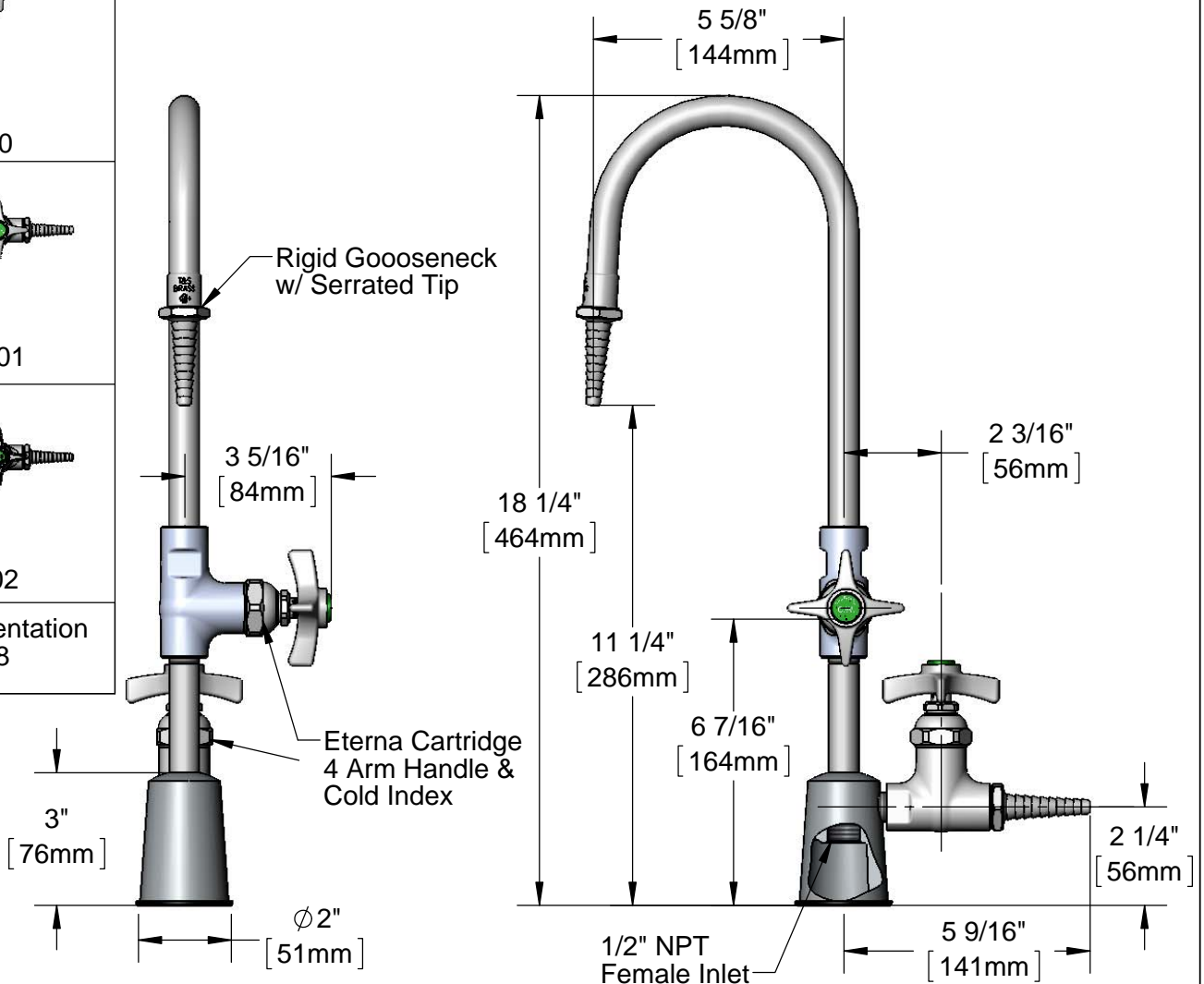


BL-6050-01



BL-6050-02

Gooseneck Orientation
Scale: 1:8



Product Specifications:

Multi-Water Fixture w/ Rigid Gooseneck,
Water Stop(s) & Serrated Tips

Product Compliance:

ASME A112.18.1 / CSA B125.1
NSF 61 - Section 9
NSF 372 (Low Lead Content)
ASSE 1016 / ASME A112.1016 / CSA B125.16
ANSI A117.1 (ADA)



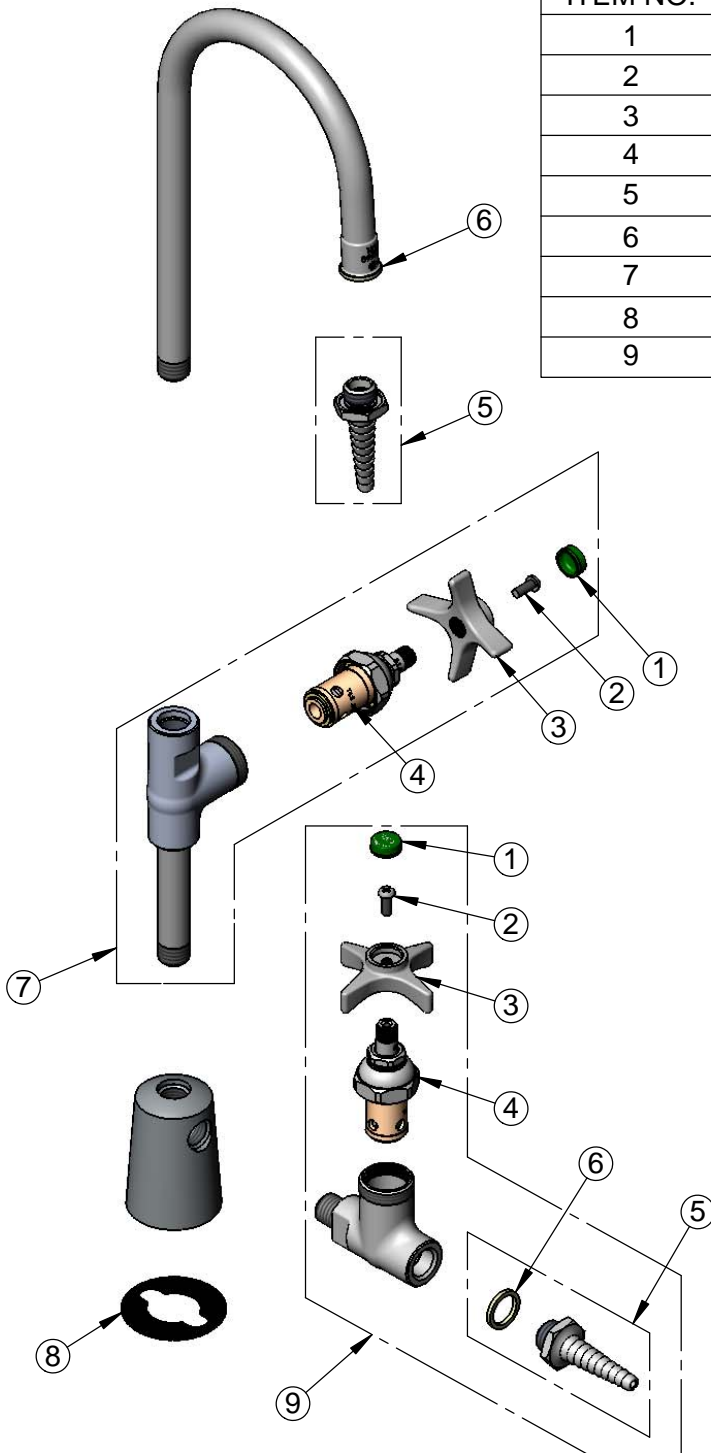
T&S BRASS AND BRONZE WORKS, INC.
 2 Saddleback Cove / P.O. Box 1088
 Travelers Rest, SC 29690

Model No.
BL-6050 SERIES

Item No.

Travelers Rest, SC: 800-476-4103 • Simi Valley, CA: 800-423-0150 • Fax: 864-834-3518 • www.tsbrass.com

ITEM NO.	SALES NO.	DESCRIPTION
1	001191-45	Green Index - CW
2	000925-45	Lab Handle Screw
3	000059-40	4-Arm Lab Handle
4	005960-40	Eterna Cartridge, RTC
5	BL-5550-04	Serrated Tip
6	001051-45	Washer
7	016094-40	Straight Stop Assembly
8	144L	Black Plastic Gasket
9	BL-4500-02	Straight Stop, Water



Product Specifications:
 Multi-Water Fixture w/ Rigid Gooseneck,
 Water Stop(s) & Serrated Tips

Product Compliance:
 ASME A112.18.1 / CSA B125.1
 NSF 61 - Section 9
 NSF 372 (Low Lead Content)
 ASSE 1016 / ASME A112.1016 / CSA B125.16
 ANSI A117.1 (ADA)