



**T&S BRASS AND BRONZE WORKS, INC.**  
 2 Saddleback Cove / P.O. Box 1088  
 Travelers Rest, SC 29690

Model No.

**B-WH4-K-NS**

Item No.

Travelers Rest, SC: 800-476-4103 • Simi Valley, CA: 800-423-0150 • Fax: 864-834-3518 • www.tsbrass.com

This Space for Architect/Engineer Approval

Job Name \_\_\_\_\_ Date \_\_\_\_\_

Model Specified \_\_\_\_\_ Quantity \_\_\_\_\_

Customer/Wholesaler \_\_\_\_\_

Contractor \_\_\_\_\_

Architect/Engineer \_\_\_\_\_



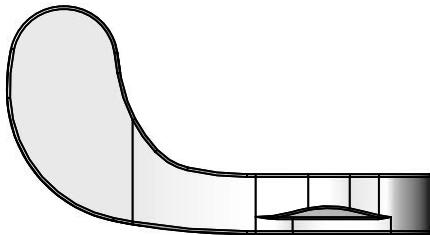
001193-19NS  
 Red H. W. Index  
 (Qty = 1 ea.)



018506-19NS  
 Blue C.W. Index  
 (Qty = 1 ea.)



000925-45  
 Handle Screw  
 (Qty = 2 ea.)



B-WH4-NS  
 4" Wrist Action Handle  
 (Qty = 2 ea.)



001466-20  
 Quarter-Turn Sleeve  
 (Qty = 2 ea.)



003164-45  
 Spring Check Plunger  
 (Qty = 2 ea.)



001479-45  
 Spring  
 (Qty = 2 ea.)

**Water Contact Parts**

Product Specifications:

Parts Kit For T&S Quarter-Turn Eterna Cartridge w/ Spring Check & 4" Wrist Action Handle

Product Compliance:

NSF 61 - Section 9  
 NSF 372 (Low Lead Content)