



T&S BRASS AND BRONZE WORKS, INC.

2 Saddleback Cove / P.O. Box 1088
Travelers Rest, SC 29690

Model No.

B-0687

Item No.

Travelers Rest, SC: 800-476-4103 • Simi Valley, CA: 800-423-0150 • Fax: 864-834-3518 • www.tsbrass.com

This Space for Architect/Engineer Approval

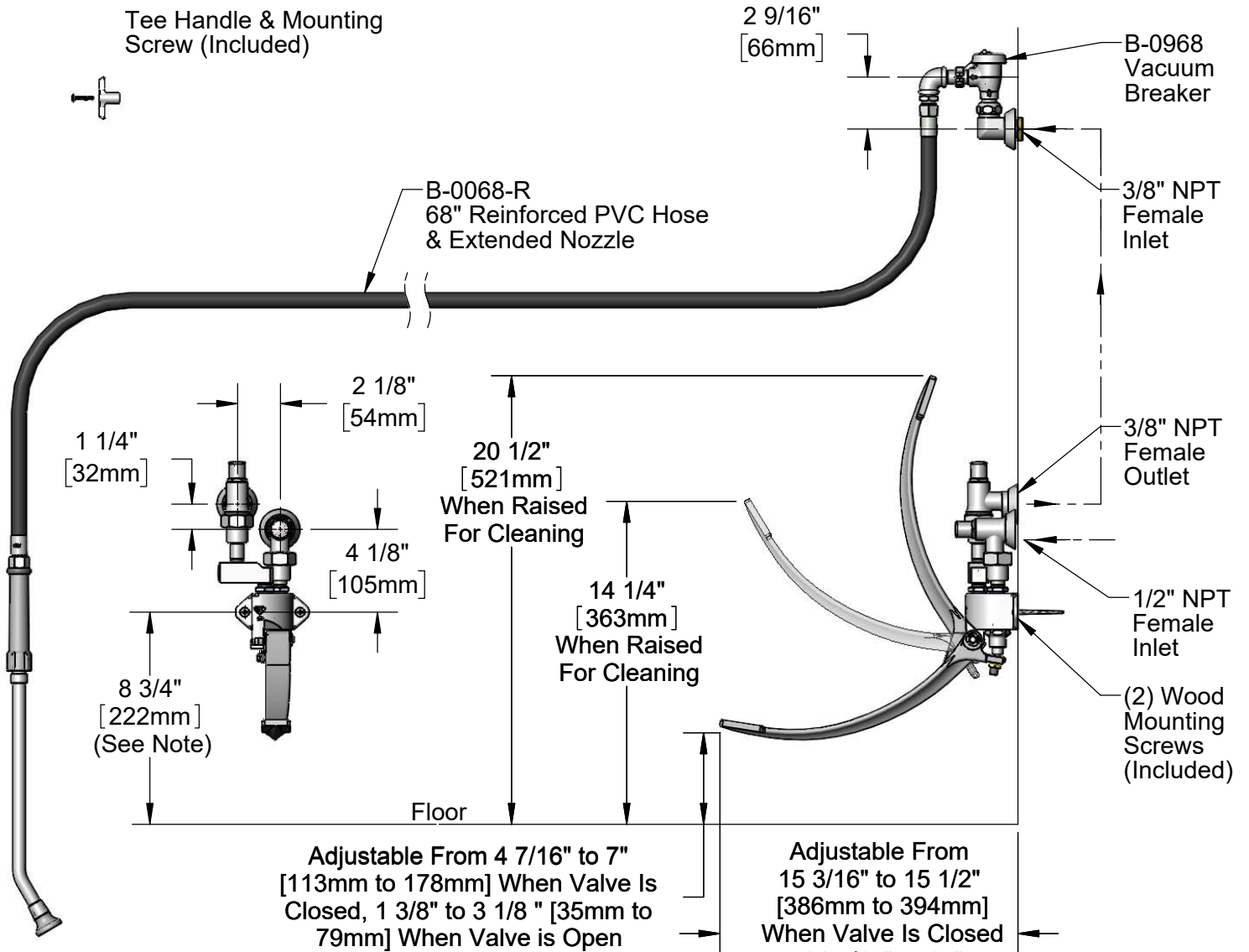
Job Name _____ Date _____

Model Specified _____ Quantity _____

Customer/Wholesaler _____

Contractor _____

Architect/Engineer _____



Note: All Pedal Position Dimensions are Based on Minimum Recommended Mounting Height of 8 3/4" [222mm] Above Finished Floors.

Product Specifications:

Bedpan Washer, Foot Valve Control, Integral Loose Key Stops, Vacuum Breaker & Extended Nozzle w/ 2.2 GPM Rosespray

Product Compliance:

ASME A112.18.1 / CSA B125.1
ASSE 1001 (VB)

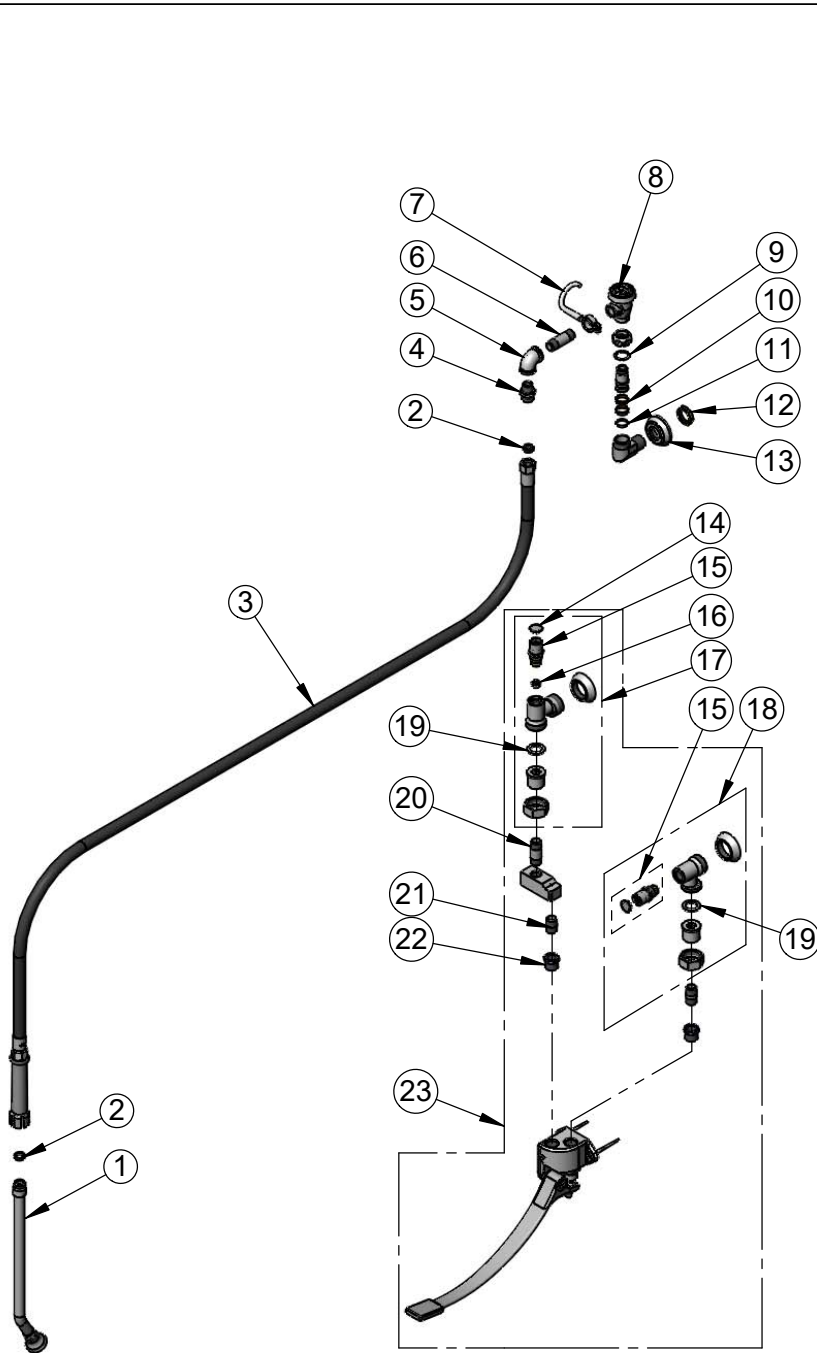


T&S BRASS AND BRONZE WORKS, INC.
 2 Saddleback Cove / P.O. Box 1088
 Travelers Rest, SC 29690

Model No.
B-0687

Item No.

Travelers Rest, SC: 800-476-4103 • Simi Valley, CA: 800-423-0150 • Fax: 864-834-3518 • www.tsbrass.com



ITEM NO.	SALES NO.	DESCRIPTION
1	002861-40	Extended Spray Wand
2	010476-45	#27 Washer
3	B-0068-R	68" Reinforced PVC Hose
4	053A	Adapter, 3/8" NPT Male
5	001355-40	Elbow, 3/8 NPT
6	000357-40	Nipple, 3/8" NPT x 2"
7	004R	Wall Hook
8	B-0968	3/8" NPT Vacuum Breaker
9	009538-45	Swivel Washer
10	011429-45	Swivel Sleeves (2)
11	001074-45	O-Ring
12	000713-20	Lock Nut
13	000023-40	Adjustable Wall Flange
14	001605-45	Cap
15	166A	Service Stop Spindle w/ Tee Handle & Screw
16	000763-20	Seat
17	B-1355	Loose Key 3/8" NPT Angle Stop w/ Tee Handle & Screw
18	B-1351	Loose Key 1/2" NPT Angle Stop w/ Tee Handle & Screw
19	001019-45	Coupling Nut Washer
20	000356-45	Nipple, 3/8" NPT x 1 3/4"
21	002535-25	3/8" Close Nipple
22	001359-40	Hex Bushing, 1/2" NPT Male x 3/8" NPT Female
23	B-0508-01	Wall Mount Single Pedal Valve w/ Angle Stops



002432-45
 T-Handle Screw



001802-45
 T-Handle

Product Specifications:
 Bedpan Washer, Foot Valve Control, Integral Loose Key Stops, Vacuum Breaker & Extended Nozzle w/ 2.2 GPM Rosespray

Product Compliance:
 ASME A112.18.1 / CSA B125.1
 ASSE 1001 (VB)