



T&S BRASS AND BRONZE WORKS, INC.

2 Saddleback Cove / P.O. Box 1088
Travelers Rest, SC 29690

Model No.

B-0682

Item No.

Travelers Rest, SC: 800-476-4103 • Simi Valley, CA: 800-423-0150 • Fax: 864-834-3518 • www.tsbrass.com

This Space for Architect/Engineer Approval

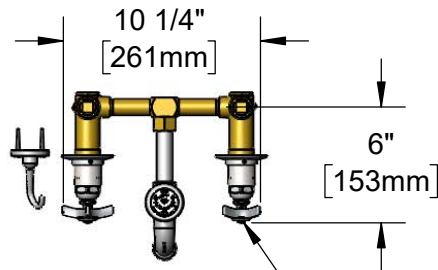
Job Name _____ Date _____

Model Specified _____ Quantity _____

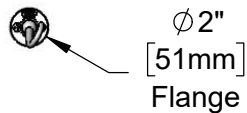
Customer/Wholesaler _____

Contractor _____

Architect/Engineer _____



Quarter-Turn
Eterna Cartridges w/
Spring Checks &
4-Arm Handles w/
Color Coded Indexes

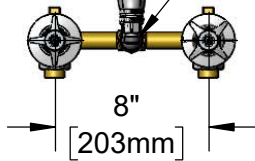


B-0068-R
68" Reinforced PVC
Hose & Spray Valve
w/ Extended Nozzle

B-0104-D
Dummy Wall
Hook

Mounting
Surface

B-0969
Vacuum Breaker
Items Not Shown
for Clarity



4 15/16"
[126mm]

2 3/8"
[61mm]

4"
[101mm]

Concealed
Mixing Valve

1/2" NPT
Female Inlets

2 1/2"
[64mm]
Minimum

3 1/2"
[89mm]
Maximum

Rough-In Requirement:
(2) Ø 1 1/2" [38mm] Mounting Holes

Product Specifications:

Bedpan Washer, 8" Concealed Bypass Mixing Valve, Quarter-Turn Eterna Cartridges w/ Spring Checks, 4-Arm Handles, Vacuum Breaker, 68" Reinforced PVC Hose, Spray Valve w/ Extended Nozzle w/ 2.2 GPM Rosespray, Dummy Wall Hook & 1/2" NPT Female Inlets

Product Compliance:

ASME A112.18.1 / CSA B125.1
NSF 61 - Section 9
NSF 372 (Low Lead Content)
ASSE 1001 (VB)
2019 DOE PRSV Non-Compliant



T&S BRASS AND BRONZE WORKS, INC.

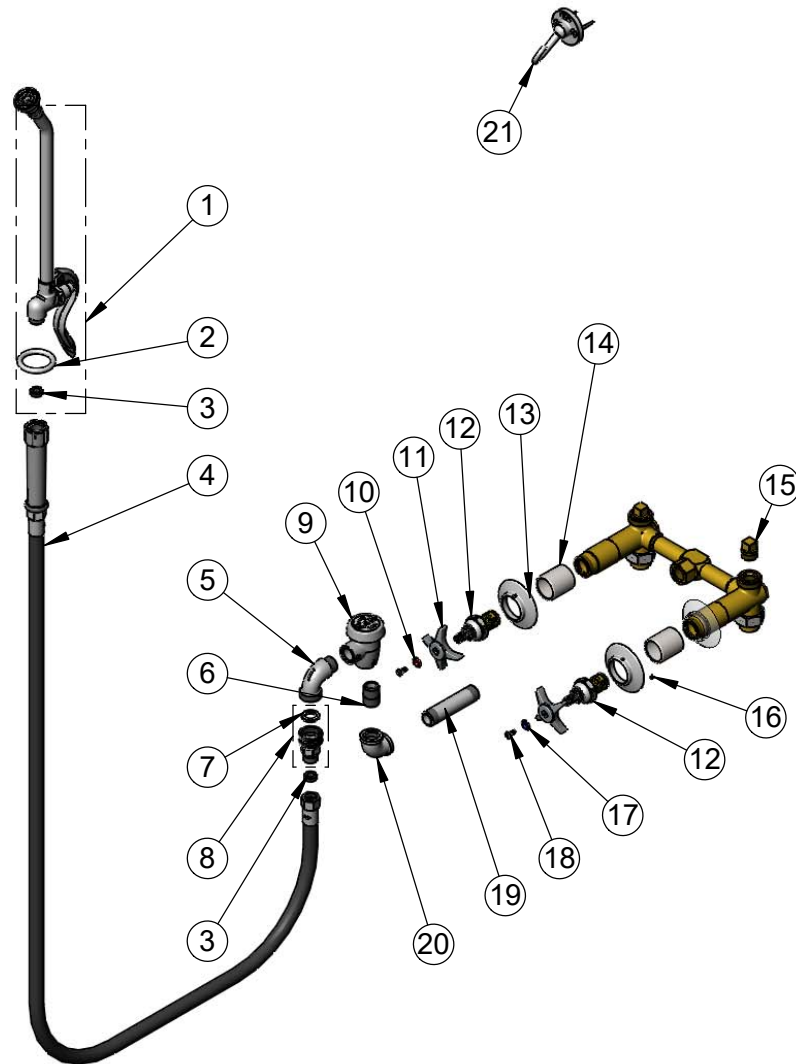
2 Saddleback Cove / P.O. Box 1088
Travelers Rest, SC 29690

Model No.

B-0682

Item No.

Travelers Rest, SC: 800-476-4103 • Simi Valley, CA: 800-423-0150 • Fax: 864-834-3518 • www.tsbrass.com



ITEM NO.	SALES NO.	DESCRIPTION
1	002865-40	Extended Spray Wand
2	000907-45	Spray Valve Hold Down Ring
3	010476-45	#27 Washer
4	B-0068-R	68" Reinforced PVC Hose
5	001618-40	Spout, Short
6	002534-25	Close Nipple, 1/2" NPT
7	001019-45	Coupling Nut Washer
8	059A	Adapter, Garden Hose
9	B-0969	1/2" NPT Vacuum Breaker
10	001661-45	Red Index-HW
11	002521-45	4-Arm Handle
12	012443-40	Quarter-Turn Eterna Cartridge w/ Spring Check, RTC
13	001501-40	Escutcheon
14	151F	Escutcheon Tube
15	001347-20	1/2" NPT Square Head Plug
16	000939-45	Escutcheon, Set Screw
17	001660-45	Blue Index-CW
18	000922-45	Lever Handle Screw
19	002556-40	Nipple, 1/2" NPT x 3 1/2"
20	001357-40	Cast Elbow, 1/2"
21	B-0104	Dummy Wall Hook

Product Specifications:

Bedpan Washer, 8" Concealed Bypass Mixing Valve, Quarter-Turn Eterna Cartridges w/ Spring Checks, 4-Arm Handles, Vacuum Breaker, 68" Reinforced PVC Hose, Spray Valve w/ Extended Nozzle w/ 2.2 GPM Rosespray, Dummy Wall Hook & 1/2" NPT Female Inlets

Product Compliance:

ASME A112.18.1 / CSA B125.1
NSF 61 - Section 9
NSF 372 (Low Lead Content)
ASSE 1001 (VB)
2019 DOE PRSV Non-Compliant