



T&S BRASS AND BRONZE WORKS, INC.

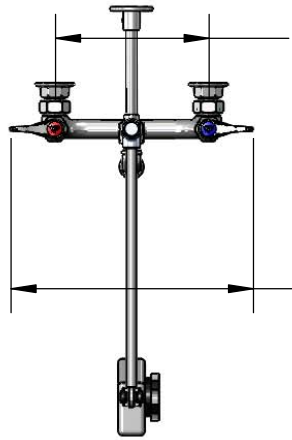
2 Saddleback Cove / P.O. Box 1088
Travelers Rest, SC 29690

Model No.

B-0129-VB-08

Item No.

Travelers Rest, SC: 800-476-4103 • Simi Valley, CA: 800-423-0150 • Fax: 864-834-3518 • www.tsbrass.com



8"
[203mm]
Adjustable From
7 3/4" to 8 1/4"
[197mm to 210mm]

12 5/8"
[321mm]



This Space for Architect/Engineer Approval

Job Name _____ Date _____

Model Specified _____ Quantity _____

Customer/Wholesaler _____

Contractor _____

Architect/Engineer _____



Quarter-Turn
Eterna Cartridges
w/ Spring Checks
& Lever Handles
w/ Color Coded
Indexes

Ø2" [51mm]
Flange w/
1/2" NPT
Female Inlets

Balancer

B-0970-FE
3/8" NPT
Vacuum
Breaker

68" Flexible
Stainless
Steel Hose

B-0108
1.07 GPM
Spray Valve

14"
[355mm]

53"
[1346mm]

(2) B-0109-01
6" Wall Bracket

3/8" NPT x
24" Riser

3/8" NPT Pipe
Coupling

3/8" NPT x
24" Riser

Mounting
Surface

Product Specifications:

Pre-Rinse Unit: 8" Wall Mount Mixing Faucet, Quarter-Turn Eterna Cartridges w/ Spring Checks, Lever Handles, 68" Flexible Stainless Steel Hose, 1.07 GPM Spray Valve, Balancer, Extension Arm, 3/8" NPT Vacuum Breaker, (2) 6" Wall Brackets & 1/2" NPT Female Inlets

Product Compliance:

ASME A112.18.1 / CSA B125.1
NSF 61 - Section 9
NSF 372 (Low Lead Content)
EPA Act 2005 (PRSV)
CSA B64.8



T&S BRASS AND BRONZE WORKS, INC.

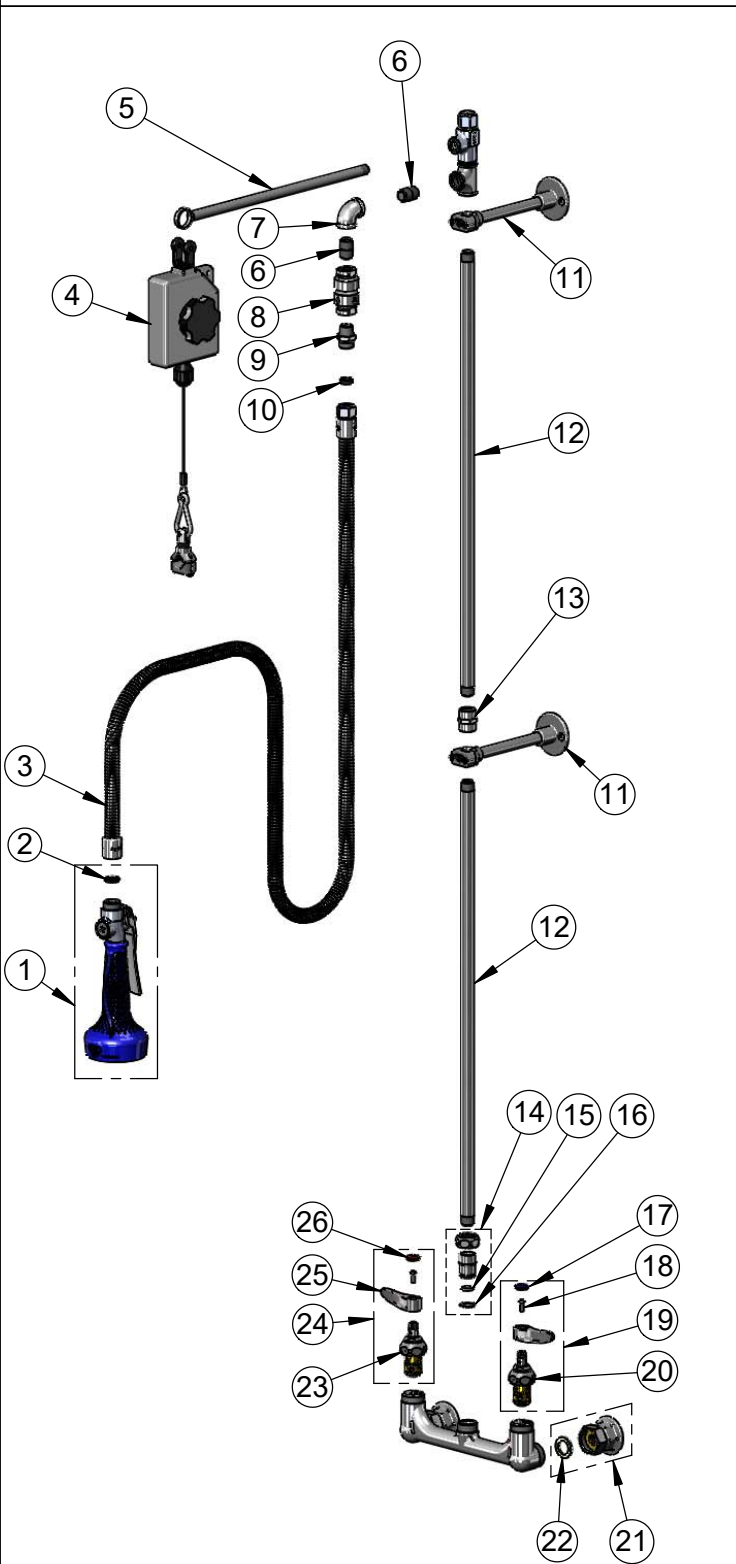
2 Saddleback Cove / P.O. Box 1088
Travelers Rest, SC 29690

Model No.

B-0129-VB-08

Item No.

Travelers Rest, SC: 800-476-4103 • Simi Valley, CA: 800-423-0150 • Fax: 864-834-3518 • www.tsbrass.com



| ITEM NO. | SALES NO. | DESCRIPTION |
|----------|-------------|--|
| 1 | B-0108 | 1.07 GPM JeTSpray Valve w/ Ergo-Grip |
| 2 | 001014-45 | Washer, B-0100 Hose Barrel |
| 3 | B-0068-H2A | 68" Flexible Stainless Steel Hose, Less Handle |
| 4 | 005311-40 | Balancer |
| 5 | 005252-20 | Extension Arm, Chrome Plated |
| 6 | 002535-25 | 3/8" Close Nipple |
| 7 | 001355-40 | Elbow, 3/8 NPT |
| 8 | B-0970-FE | 3/8" NPT Vacuum Breaker |
| 9 | 053A | Adapter, 3/8" NPT Male |
| 10 | 010476-45 | #27 Washer |
| 11 | B-0109-01 | 6" Wall Bracket |
| 12 | 000372-40 | 3/8" NPT x 24" Riser |
| 13 | 001769-40 | Coupling, 3/8" NPT |
| 14 | EZ-K | EasyInstall Kit |
| 15 | 001065-45 | O-Ring |
| 16 | 014200-45 | Star Washer, Anti-Rotation |
| 17 | 018506-19NS | Blue Button Index, Press-in |
| 18 | 000925-45 | Lab Handle Screw |
| 19 | 002711-40NS | Quarter-Turn Eterna Cartridge w/ Spring Check, Handle, Blue Index & Screw, LTC |
| 20 | 012442-40NS | Quarter-Turn Eterna Cartridge w/ Spring Check, LTC |
| 21 | 00AA | 1/2" NPT Female Eccentric Flange |
| 22 | 001019-45 | Coupling Nut Washer |
| 23 | 012443-40NS | Quarter-Turn Eterna Cartridge w/ Spring Check, RTC |
| 24 | 002712-40NS | Quarter-Turn Eterna Cartridge w/ Spring Check, Handle, Red Index & Screw, RTC |
| 25 | 001638-45NS | Lever Handle (New Style) |
| 26 | 001193-19NS | Red Button Index, Press-in |

Product Specifications:
 Pre-Rinse Unit: 8" Wall Mount Mixing Faucet, Quarter-Turn Eterna Cartridges w/ Spring Checks, Lever Handles, 68" Flexible Stainless Steel Hose, 1.07 GPM Spray Valve, Balancer, Extension Arm, 3/8" NPT Vacuum Breaker, (2) 6" Wall Brackets & 1/2" NPT Female Inlets

Product Compliance:
 ASME A112.18.1 / CSA B125.1
 NSF 61 - Section 9
 NSF 372 (Low Lead Content)
 EPA Act 2005 (PRSV)
 CSA B64.8