

### FEATURES

- Single threshold for alcove installation.
- Pre-leveled base with textured bottom.
- Installation for new and existing construction
- Engineered compound material composed of resin, glass, and special fillers formed into sheets. Sheets are placed extreme pressure and heat to form precise radius and angle.
- Base is strong, lightweight, slip resistant and scratch resistant.
- 6" high threshold. Raised front profile. Extended tile flange.
- Center drain location. 3¼" drain opening. Drain not included.
- Made in the USA.
- 15 Year Limited Residential Warranty / 3 Year Commercial Warranty

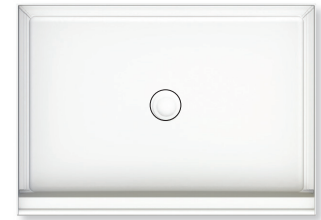


### COLORS

- 2 high gloss colors.

### Specified Model

	SIZE	MODEL NO.	Width (W)	Depth (D)	Height (H)	(E)	(F)
<b>CENTER DRAIN</b>							
<input type="checkbox"/>	48" x 34"	T34834	48"	34"	7" / 6"	16½"	24"
<input type="checkbox"/>	60" x 34"	T36034	60"	34"	7" / 6"	16½"	30"



Rectangular Center Drain  
T34834  
T36034

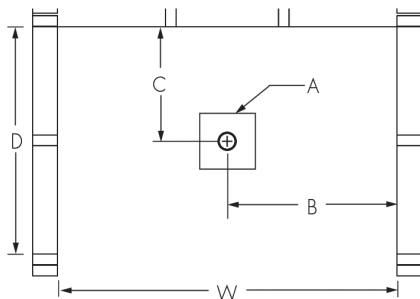
### To Be Specified: Color

<input type="checkbox"/>	01 White
<input type="checkbox"/>	08 Biscuit



White 01      Biscuit 08

### Framing Dimensions



TYPE	DEPTH (D)	WIDTH (W)	HEIGHT (H)	A	B	C
Alcove	34"	48"	-	Box Out	24"	16½"
Alcove	34"	60"	-	Box Out	30"	16½"

