

Drake® 1G® WASHLET®+ S550e Close Coupled Toilet - 1.0 and 0.8 GPF

FEATURES

- Concealed supply connection for seamless installation
- DYNAMAX TORNADO FLUSH® utilizes 360° cleaning power to reach every part of the bowl
- Ultra high-efficiency dual flush 1.0 & 0.8 GPF (3.8 & 3.0 LPF)
- CEFIONTECT® ceramic glaze prevents debris and mold from sticking to ceramic surfaces
- Design of the bowl reduces water flow resistance resulting in a quieter flushing sound
- 12" Rough-in
- Chrome plated trip lever
- Elongated front bowl and WASHLET+ S550e and tank set
- EWATER+® auto-cleans wand and bowl
- On-demand remote function cleans wand with EWATER+
- PREMIST of bowl before each use
- Remote control operated
- Auto Flush available as upgrade
- Auto Open / Close Lid
- Night light
- Auto Flush available as upgrade
- Semi-concealed trapway



MODELS & COMPONENTS

- **MW7463056CUMGA (#01)**
With CEFIONTECT ceramic glaze, WASHLET+ S550e with contemporary design and Auto Flush
 - **CT746CUGT40**
Elongated bowl with CEFIONTECT
 - **ST746UMA**
Tank and cover only
 - **SW3056AT40**
WASHLET+ S550e
 - **THU765**
Auto Flush Kit
- **MW7463056CUMG (#01)**
Same as MW7463056CUMGA without Auto Flush
 - **CT746CUGT40**
Elongated bowl with CEFIONTECT
 - **ST746UMA**
Tank and cover only
 - **SW3056AT40**
WASHLET+ S550e

Optional Components

- **THU773#01**
Trip Lever - Cotton
- **THU773#PN**
Trip Lever - Polished Nickel
- **THU773#BN**
Trip Lever - Brushed Nickel

COLORS/FINISHES

- #01 Cotton

- 1G One Gallon Per Flush
- DYNAMAX TORNADO FLUSH
- CEFIONTECT
- EWATER+
- Auto Flush

PRODUCT SPECIFICATION

The two-piece ultra high-efficiency DYNAMAX TORNADO FLUSH toilet shall be dual flush 1.0 GPF/0.8 GPF. Toilet shall be 12" rough-in. Toilet shall have CEFIONTECT ceramic glaze. Toilet shall have elongated front bowl and Polished Chrome trip lever. Toilet shall be TOTO Model MW7463056CUMG_____.

See SW3056AT40 Specification Sheet for details on included WASHLET.

CODES/STANDARDS

- Meets and exceeds ASME A112.19.2/CSA B45.1, ASME A112.19.14
- Certifications: IAPMO(cUPC®), EPA WaterSense, State of Massachusetts, and others
- Code Compliance: UPC, IPC, NSPC, NPC Canada, and others
- Legislative Compliance: California Green Building Code, City of Los Angeles Water Efficiency Ordinance, and others
- Complies with CA Prop 65 warning requirements



MW7463056CUMG(A)

Drake® 1G® WASHLET®+ S550e Close Coupled Toilet - 1.0 and 0.8 GPF

SPECIFICATIONS

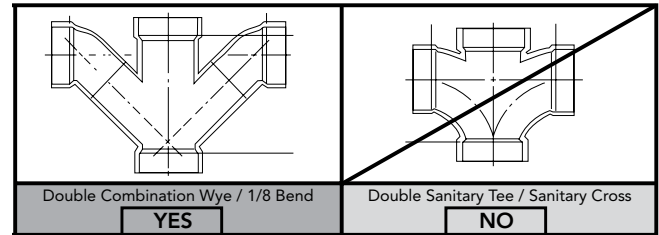
Water Use	1.0 & 0.8 GPF (3.8 & 3.0 LPF)
Flush System	DYNAMAX TORNADO FLUSH®
Min. Water Pressure	8 psi (Flowing)
Water Surface	5-5/8" x 4-1/8"
Trap Diameter	2-1/2"
Rough-in	12" (10" & 14" Optional)
Trap Seal	2-1/8"
Warranty	One Year Limited Warranty
Material	Vitreous China
Shipping Weight	CT746CUGT40 66 lbs. ST746UMA 35 lbs.
Shipping Dimensions	CT746CUGT40 18-3/4" L x 10-1/2" W x 18-1/8" H ST746UMA 18-3/4" L x 8-3/8" W x 16" H

See SW3056AT40 Specification Sheet for details on included WASHLET.

INSTALLATION NOTES

Back-to-Back Toilet Installations:

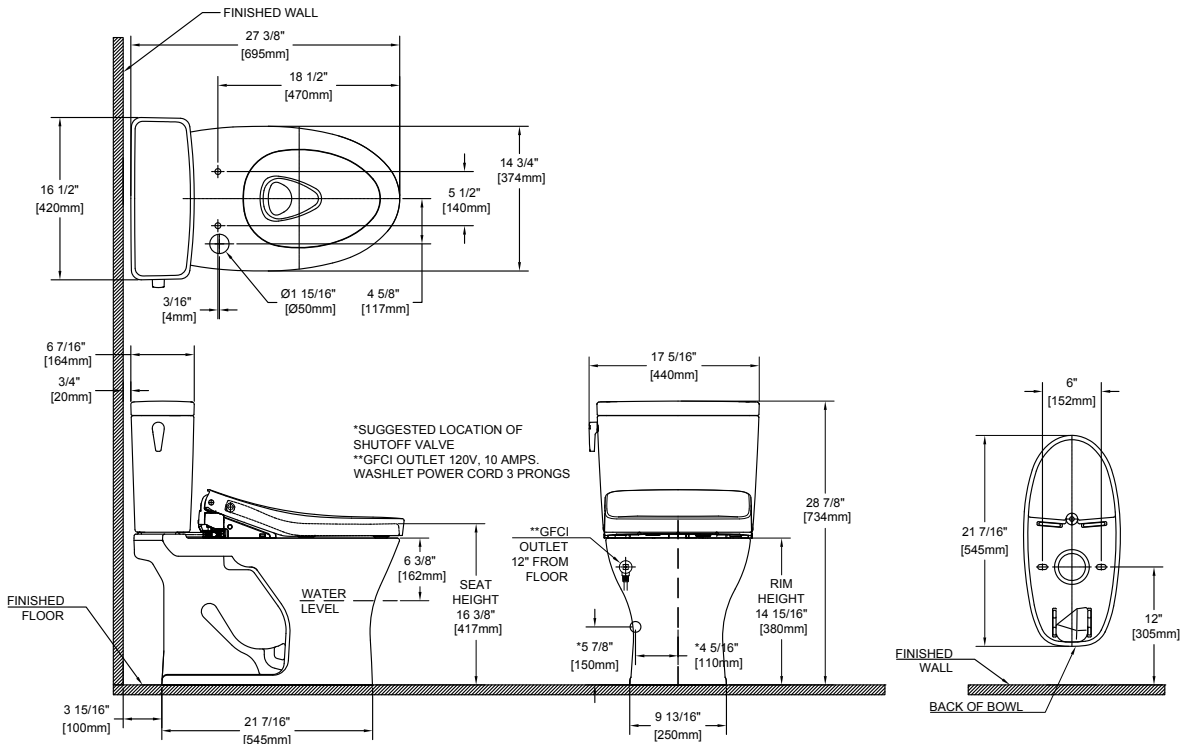
TOTO recommends the use of a nationally listed, double sanitary tee-wye only, in vertical waste stacks, in accordance with the stipulations noted in the majority of nationally recognized plumbing codes.



To maintain adequate wall gap between the back of the tank and wall, mount the floor flange at a nominal 12" rough-in distance.

Ultra-low high efficiency toilets require a system with adequate supplemental flows from other water usage fixtures and a 4" ID drainline with minimum 2% slope and maximum linear runs of 60ft. Fixture Dimensions shown are nominal.

DIMENSIONS



TOTO®

These dimensions and specifications are subject to change without notice