

# ASTRAL

## 2800 SERIES BATHWARE



TOWEL BAR



PAPER/TOWEL HOLDER



SINGLE ROBE HOOK



TOWEL RING



PAPER HOLDER

### SPECIFICATIONS

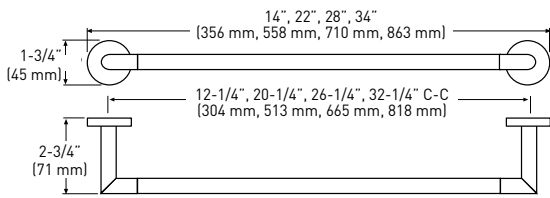
- > APPLICATION: SINGLE-FAMILY RESIDENTIAL BUILDINGS, MULTI-FAMILY RESIDENTIAL BUILDINGS
- > INCLUDES MOUNTING TEMPLATE
- > INCLUDES SOLID ZINC DIE CAST MOUNTING PLATES: 1-3/16" (30 mm) DIAMETER; NYLON ANCHORS AND STEEL PHILLIPS HEAD SCREWS: #8 x 1-1/4" (32 mm)
- > SOLID ZINC DIE-CAST CONSTRUCTION (POSTS)



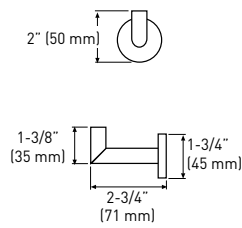
LIMITED LIFETIME WARRANTY

DESCRIPTION	SATIN NICKEL 15	MATTE BLACK 19	POLISHED CHROME 26	MATERIAL	CASE PACK
10" TOWEL BAR	-	04-2810BLK	-	ZINC/STAINLESS STEEL	10
18" TOWEL BAR	04-SN2818	04-2818BLK	04-2818	ZINC/STAINLESS STEEL	10
24" TOWEL BAR	04-SN2824	04-2824BLK	04-2824	ZINC/STAINLESS STEEL	10
30" TOWEL BAR	04-SN2830	04-2830BLK	04-2830	ZINC/STAINLESS STEEL	10
SINGLE ROBE HOOK	04-SN2801	04-2801BLK	04-2801	ZINC	10
TOWEL RING	04-SN2804A	-	04-2804A	ZINC/STEEL	10
PAPER/TOWEL HOLDER	-	04-2838BLK	04-2838	ZINC/STEEL	10
PAPER HOLDER	04-SN2848	04-2848BLK	04-2848	ZINC/STAINLESS STEEL	10

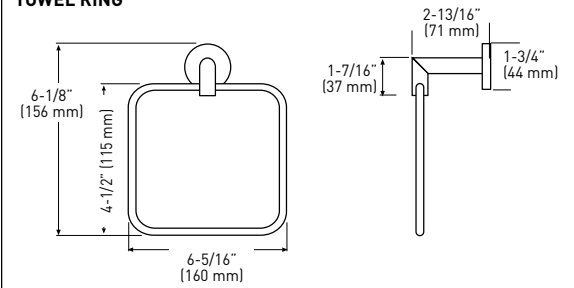
**TOWEL BAR**



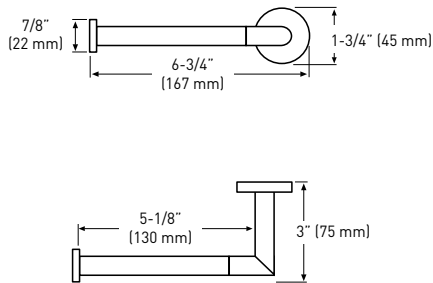
**SINGLE ROBE HOOK**



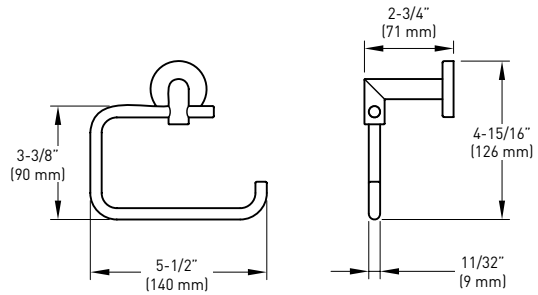
**TOWEL RING**



**PAPER HOLDER**



**PAPER/TOWEL HOLDER**



MEASUREMENTS SUBJECT TO A 3% VARIANCE.