

Taymor® | PRODUCT SPECIFICATIONS

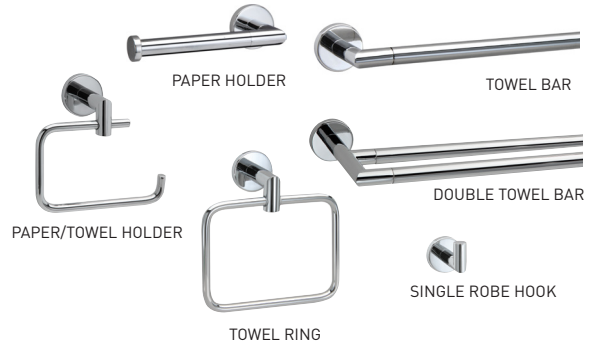
ASTRAL

FEATURES

- › INCLUDES MOUNTING PLATES
 - PAPER HOLDER: 1-7/16" x 1-9/16" (37 mm x 39 mm) - ZINC
 - PIVOTING PAPER HOLDER: 1-15/32" x 1-13/32" (37 mm x 36 mm) - ZINC
 - OTHER ITEMS: 1-3/8" x 1-3/16" (35 mm x 25 mm) - STEEL
- › INCLUDES NYLON ANCHORS AND STEEL PHILLIPS HEAD SCREWS
 - PIVOTING PAPER HOLDER: #8 x 1-1/4" (32 mm)
 - OTHER ITEMS: #8 x 1" (26 mm)
- › SOLID ZINC DIE-CAST CONSTRUCTION (POSTS)



PIVOTING PAPER HOLDER



PAPER HOLDER

TOWEL BAR

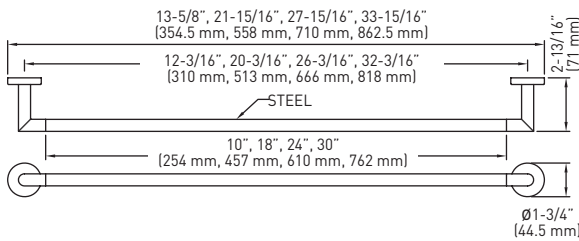
PAPER/TOWEL HOLDER

TOWEL RING

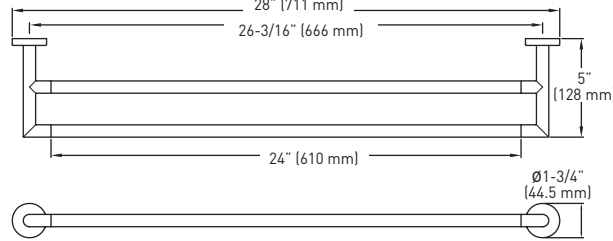
SINGLE ROBE HOOK



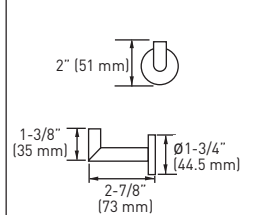
TOWEL BAR



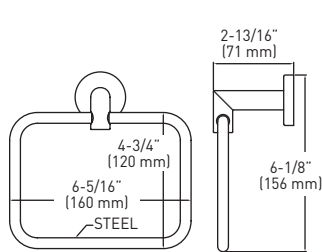
DOUBLE TOWEL BAR



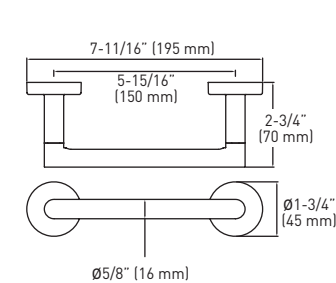
SINGLE ROBE HOOK



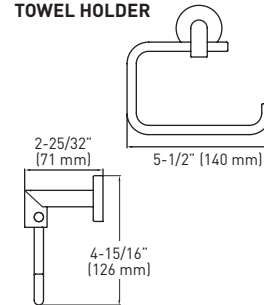
TOWEL RING



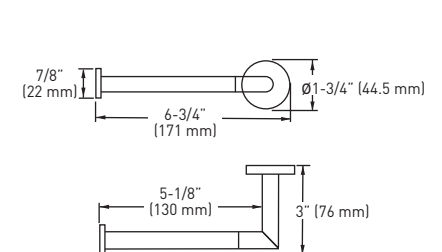
PIVOTING PAPER HOLDER



PAPER HOLDER/ TOWEL HOLDER



PAPER HOLDER



MEASUREMENTS SUBJECT TO A 3% VARIANCE

MEASUREMENTS ARE FOR REFERENCE ONLY. TAYMOR RESERVES THE RIGHT TO CHANGE THE PRODUCT SPECS WITHOUT NOTICE. FOR PRODUCT WARRANTY, PLEASE VISIT TAYMOR WEBSITE FOR DETAILS

DESCRIPTION	SATIN NICKEL 15	MATTE BLACK 19	POLISHED CHROME 26	MATERIAL	CASE PACK
10" TOWEL BAR	04-SN2810	04-2810BLK	04-2810	ZINC/STAINLESS STEEL	10
18" TOWEL BAR	04-SN2818	04-2818BLK	04-2818	ZINC/STAINLESS STEEL	10
24" TOWEL BAR	04-SN2824	04-2824BLK	04-2824	ZINC/STAINLESS STEEL	10
30" TOWEL BAR	04-SN2830	-	04-2830	ZINC/STAINLESS STEEL	10
SINGLE ROBE HOOK	04-SN2801	04-2801BLK	04-2801	ZINC	10
TOWEL RING	04-SN2804A	-	04-2804A	ZINC/STAINLESS STEEL	10
PIVOTING PAPER HOLDER	04-2808PSN	04-2808PBLK	04-2808P	ZINC	10
PAPER/TOWEL HOLDER	-	04-2838BLK	-	ZINC/STEEL	10
			04-2838	ZINC	10
PAPER HOLDER	04-SN2848	04-2848BLK	04-2848	ZINC/STAINLESS STEEL	10

