



# INSTALLATION INSTRUCTIONS LONDON

## TOOLS AND MATERIALS REQUIRED

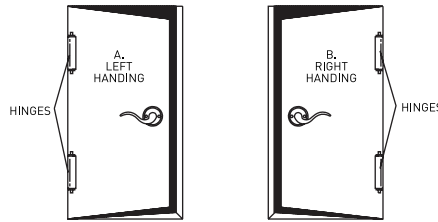
- > Drill
- > 2-1/8" (54 mm) Hole Saw
- > 3/8" (10 mm) Drill Bit
- > 1" (25 mm) Wood Bit
- > Chisel
- > Phillips Screw Driver
- > Tape Measure

**CAUTION:** Use of manual tools recommended. When using power tools, adjust to lowest torque setting.

### 1 DETERMINE DOOR HANDING:

Stand at the exterior side and face the door.

- A. Your door is a LEFT HAND door if hinges are installed at your left hand.
- B. Your door is a RIGHT HAND door if hinges are installed at your right hand.



### 2a USE THROUGHBOLT TEMPLATE TO MARK AND DRILL HOLES

#### 1. MARK DOOR

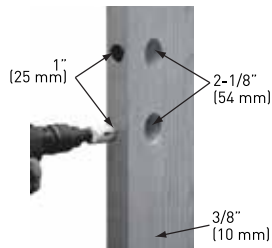
Use template attached to mark holes on door face.

- A. Make mark for 1" (25 mm) hole on door edge.
- B. Height 36" (914 mm) to 38" (965 mm) from floor.

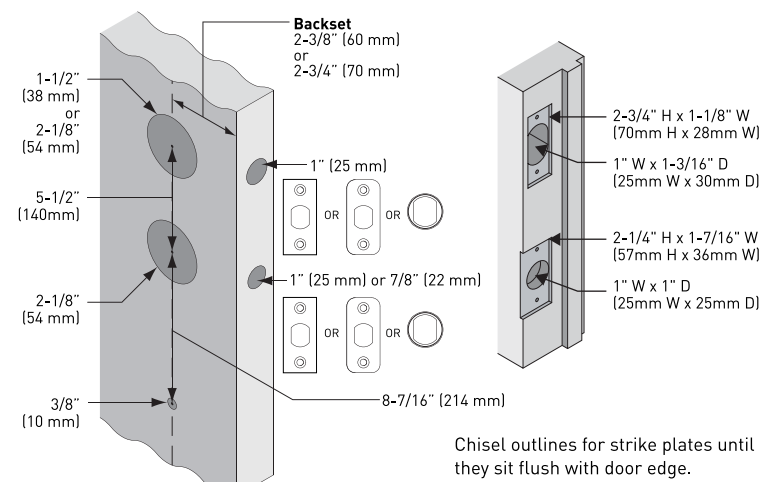


#### 2. DRILL HOLES

Select backset. Mark and drill holes as shown.

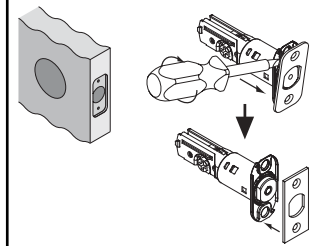


### 2b IF REPLACING EXISTING HANDLESET OR INSTALLING ON PRE-DRILLED DOOR, CHECK DOOR JAMB AND DOOR PREPARATION



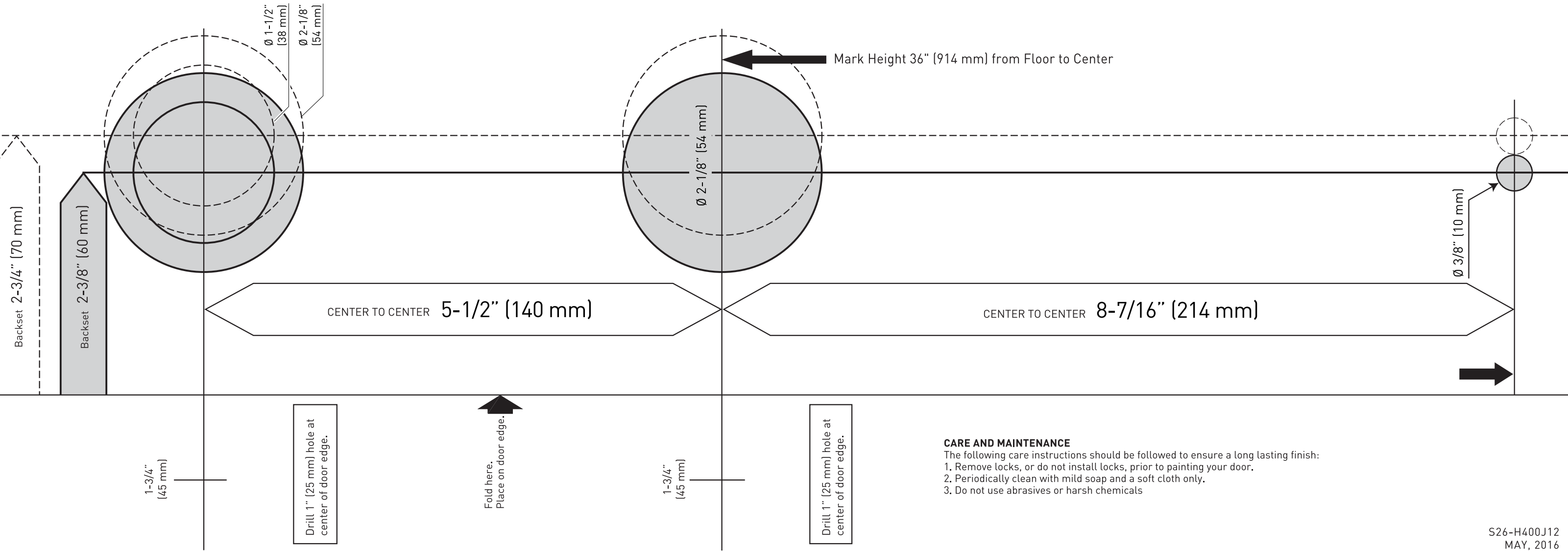
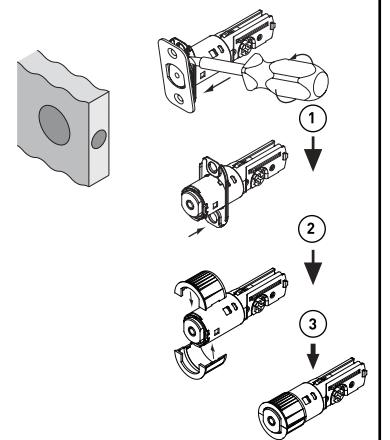
### 3 CHOOSE LATCH FACE PLATE FOR HANDLESET & DEADBOLT

#### RADIUS OR SQUARE CORNER MORTISE



Chisel 1/8" (3 mm) deep or until latch face plate is flush with door edge.

#### DRIVE-IN

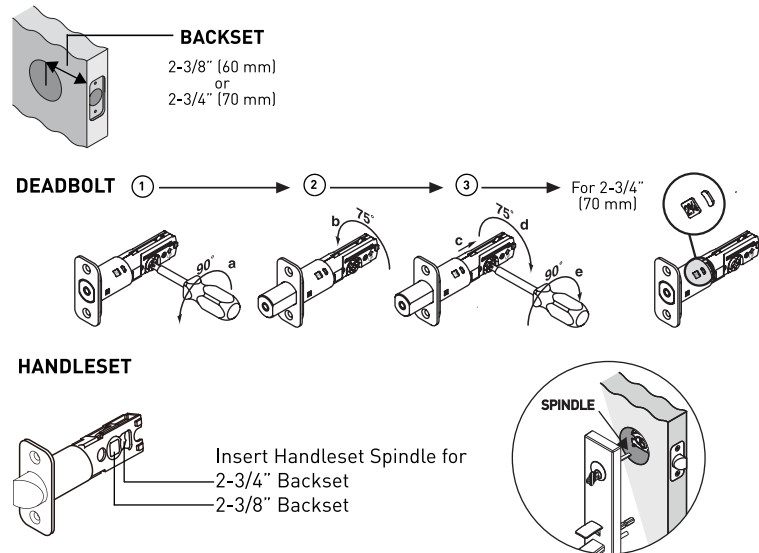


### CARE AND MAINTENANCE

The following care instructions should be followed to ensure a long lasting finish:

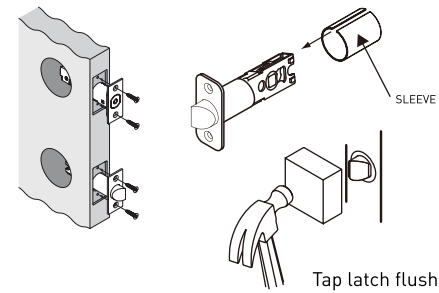
- 1. Remove locks, or do not install locks, prior to painting your door.
- 2. Periodically clean with mild soap and a soft cloth only.
- 3. Do not use abrasives or harsh chemicals

**4 IF NECESSARY ADJUST LATCH INSTALLATIONS FOR PROPER BACKSET**

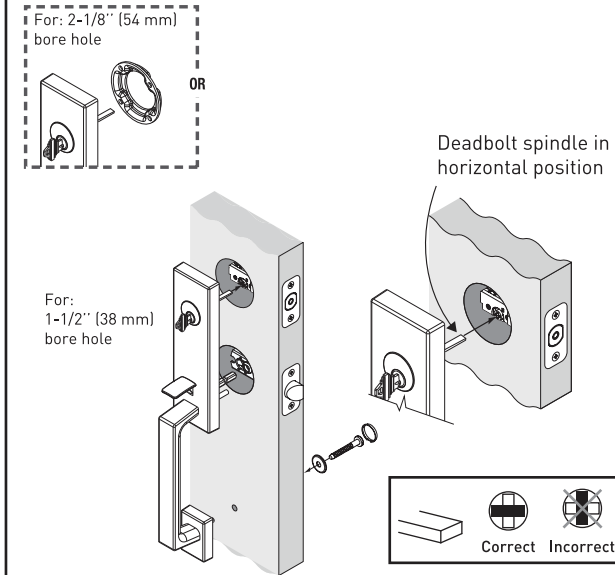


**5 INSTALL HANDLESET LATCH AND DEADBOLT**

- Place sleeve over handleset latch before installation in a square corner or radius corner mortise configuration
- Do not use sleeve for installations in drive-in configuration

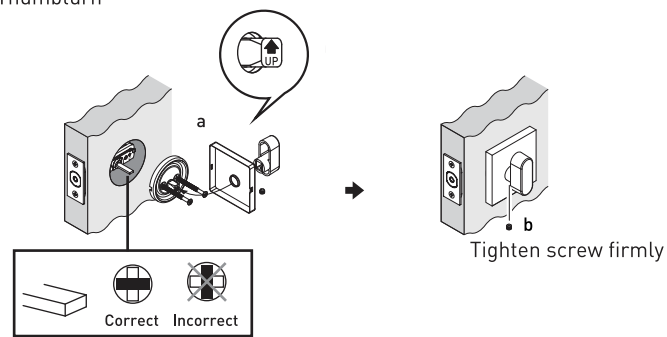


**6 INSTALL HANDLESET**

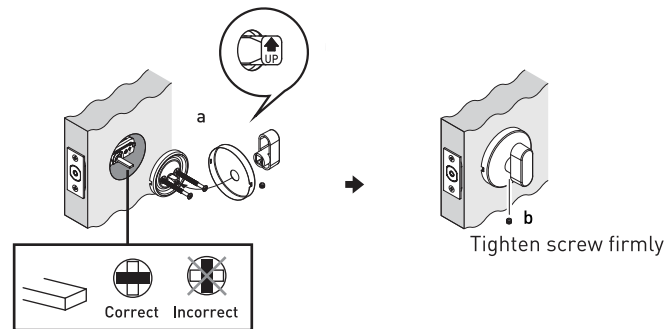


**7 (FOR SINGLE CYLINDER FUNCTION) INSTALL KNOB OR LEVER**

Install Thumbturn

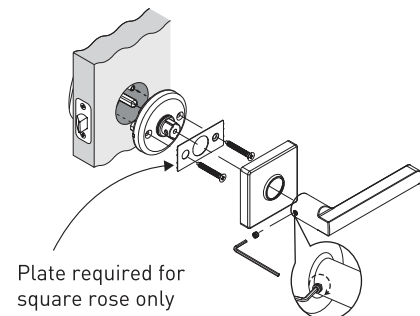


OR

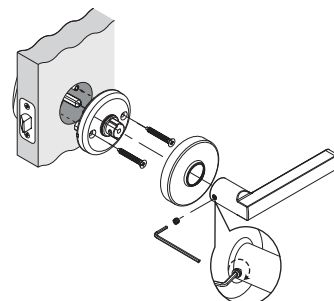


**CAUTION:** If you have ordered an inside trim, use the chassis that is included with the LONDON Handleset. Discard the chassis that is included with the inside trim.

Install inside knob or lever

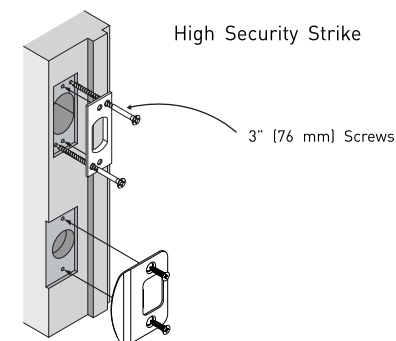


OR



**8 INSTALL STRIKES**

Install strikes onto door jamb.



1. Outside Cylinder
2. Interior Reinforcing Plate
3. Deadbolt Latch
4. Deadbolt Mounting Plate
5. Interior Deadbolt Rosette
6. Thumbturn
7. Handleset
8. Handleset Latch
9. Interior Chassis
10. Square Rose Plate
11. Interior Rose
12. Interior Lever
13. Rounded Corner Faceplate
14. Deadbolt Strike Plate
15. Rounded Corner Faceplate
16. Latch Strike
17. Washer
18. Screw Cap
19. 2-Piece Drive-In Collar for Deadbolt Latch
20. 2-Piece Drive-In Collar for Handleset Latch
21. Set Screw (2)
22. 2-1/8" (54 mm) Deadbolt Screws (2) or 2-15/32" (63 mm) Deadbolt Screws (2)
23. 1-25/64" (35.5 mm) Mounting Screws (2) or 1-13/16" (46 mm) Mounting Screws (2)
24. 1-1/4" (32 mm) Strike Screws (4)
25. 3/4" (19 mm) Latch Screws (4)
26. 3" (76 mm) Reinforcement Screws (2)
27. 1-25/64" (35.5 mm) Mounting Screw (1)

