

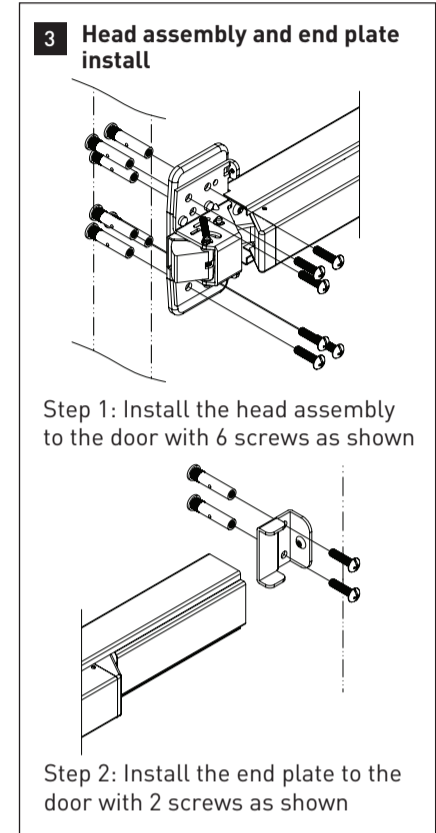
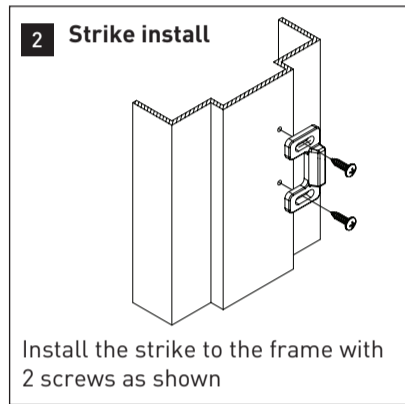
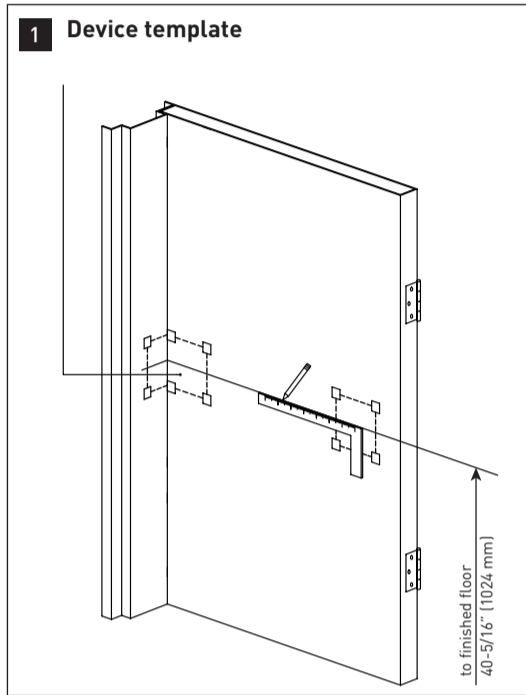
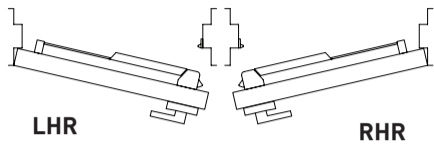
IMPORTANT

document includes template must print at 100%

Taymor F9700 SERIES FIRE-RATED RIM EXIT DEVICE - TEMPLATE

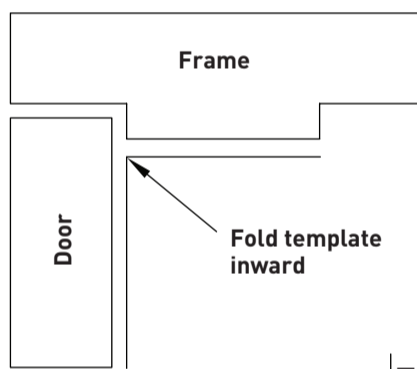
- For steel prepared doors, drill/tap and use supplied machine screws.
- For thin gauge metal, non-prepared doors or for labeled wood doors use thru bolts.
- See template for details on mounting screws.

DOOR HANDING GUIDE:



- A - Strike
- B - Head assembly
- C - End plate
- D - Push bar

F9700 SERIES FIRE-RATED EXIT DEVICE - TEMPLATE

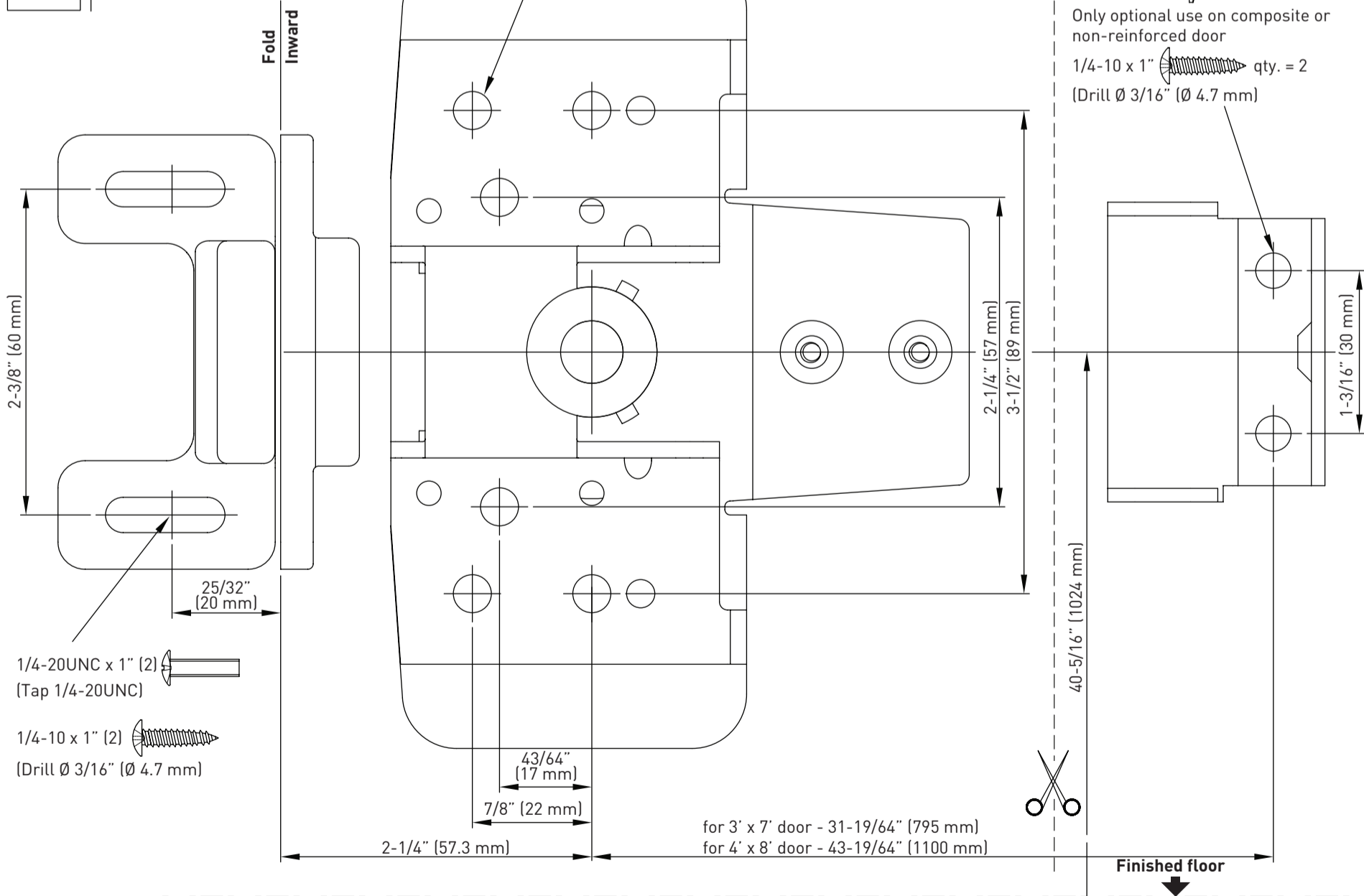


1/4-20UNC x 1" (6)
 (Tap 1/4-20UNC)
 For (Drill \varnothing 3/8" [Ø 9,6 mm])
 Only optional use on composite or non-reinforced door

1/4-10 x 1" (6)
 (Drill \varnothing 3/16" [Ø 4.7 mm])

1/4-20UNC x 1" qty. = 2
 (Tap 1/4-20UNC)
 For (Drill \varnothing 3/8" [Ø 9,6 mm])
 Only optional use on composite or non-reinforced door

1/4-10 x 1" qty. = 2
 (Drill \varnothing 3/16" [Ø 4.7 mm])



CUSTOMER SERVICE
 WEST 1-800-267-4774 | EAST 1-800-387-7064 | taymor.com

© REGISTERED TRADEMARK OF TAYMOR INDUSTRIES LTD.
 January 2013