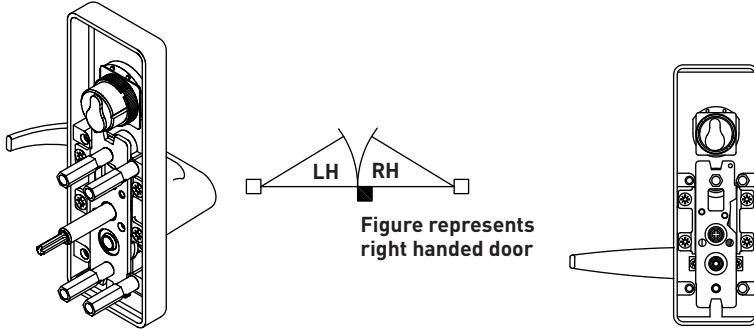
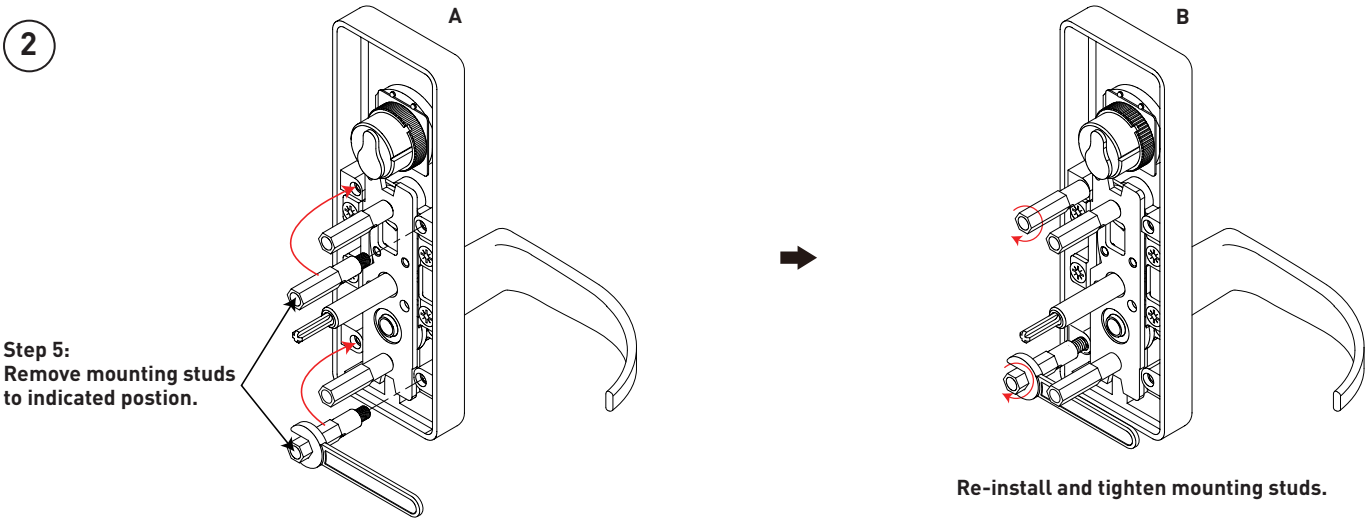
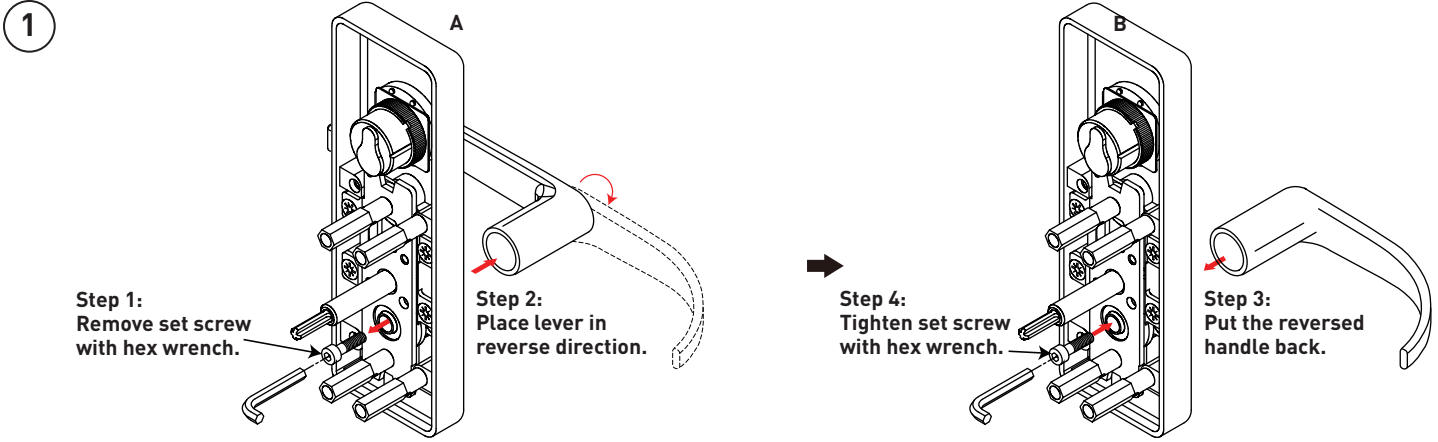


# ESCUTCHEON LEVER TRIM FOR: RIM/VERTICAL PANIC EXIT DEVICE

## INSTRUCTIONS FOR CHANGING LEVER HANDING



**CAUTION:**  
The preset lever handle is "RH"(right handed). Please follow the steps below if "LH" (left handed) is needed.



**3** The setting for switching handle direction is completed.

