

IMPORTANT document includes template must print at 100%

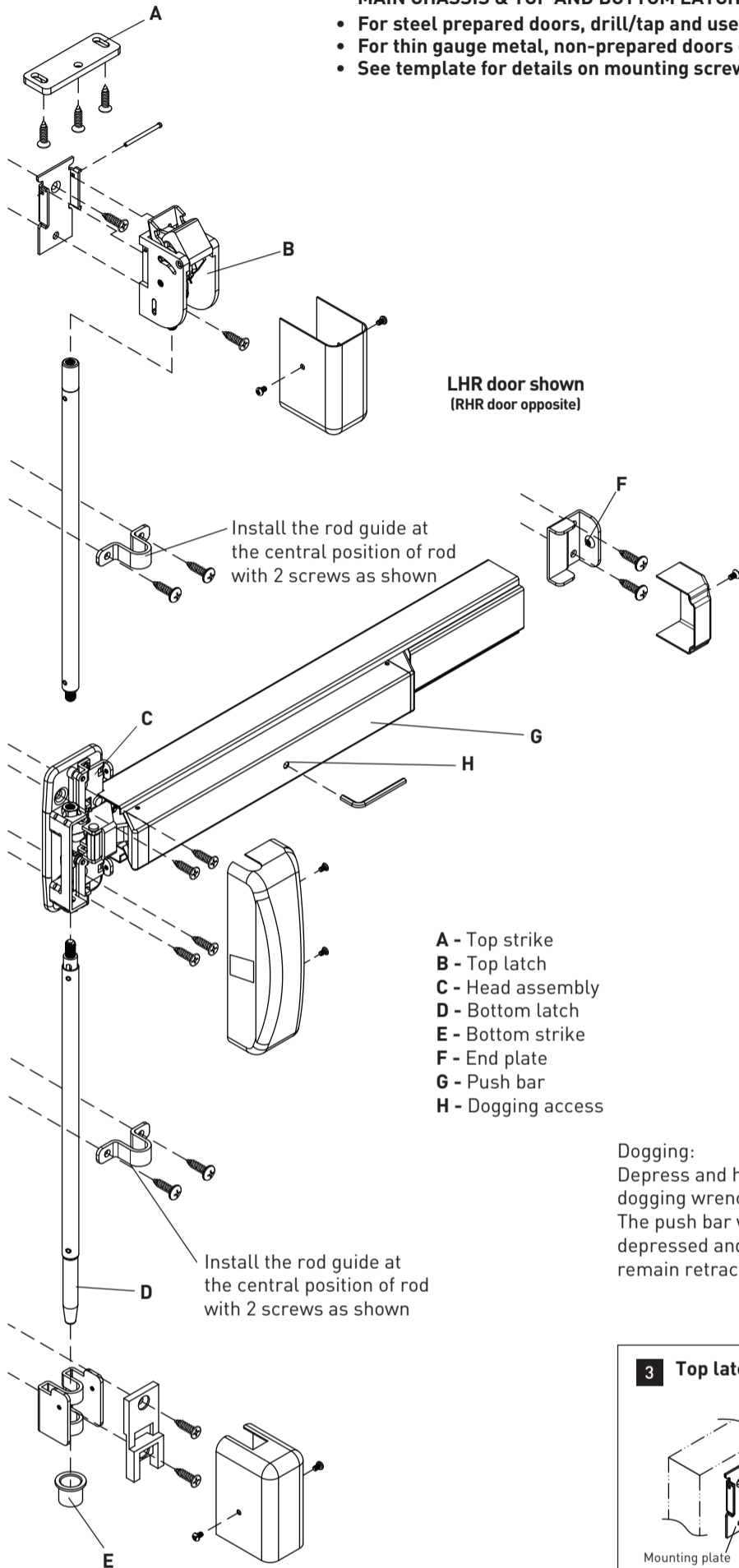
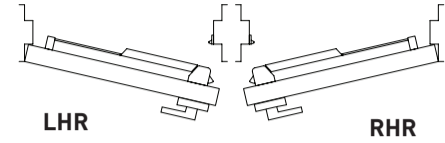
Taymor

INSTALLATION INSTRUCTIONS 9700V SERIES SAFETY-RATED SURFACE VERTICAL ROD EXIT DEVICE

MAIN CHASSIS & TOP AND BOTTOM LATCHES MOUNTING SCREWS

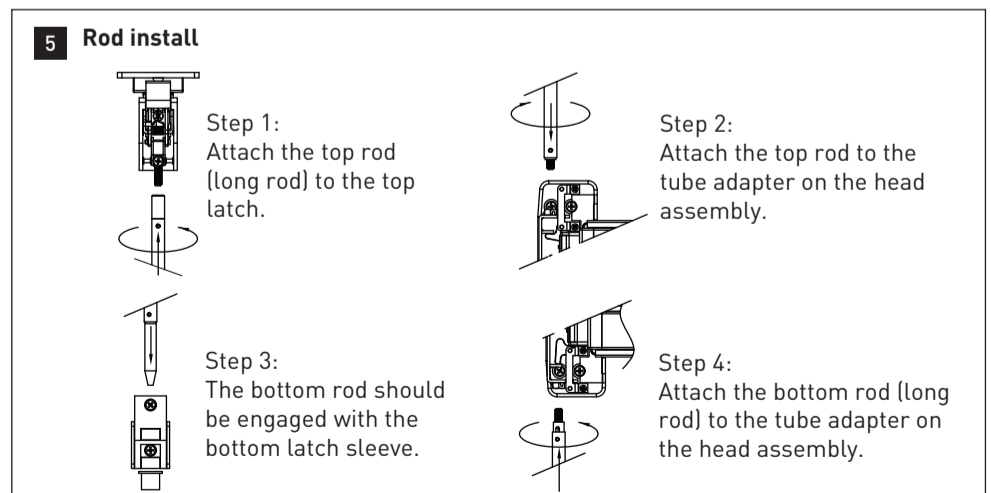
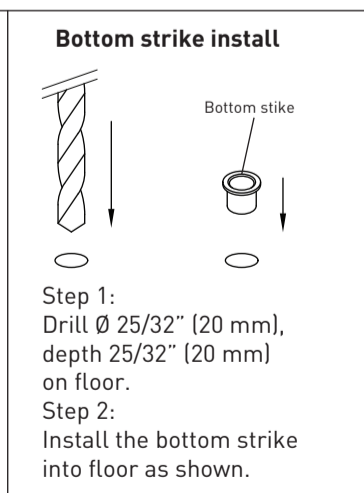
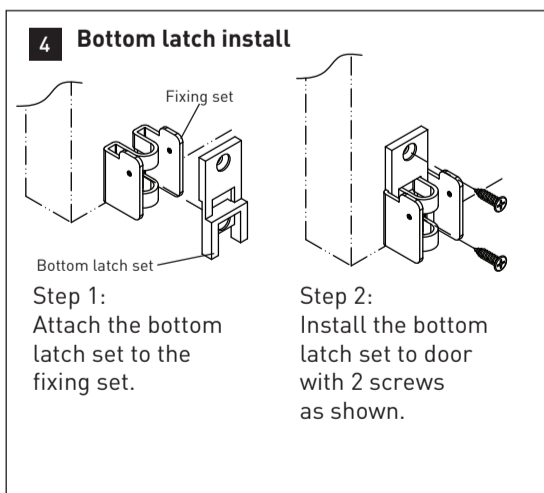
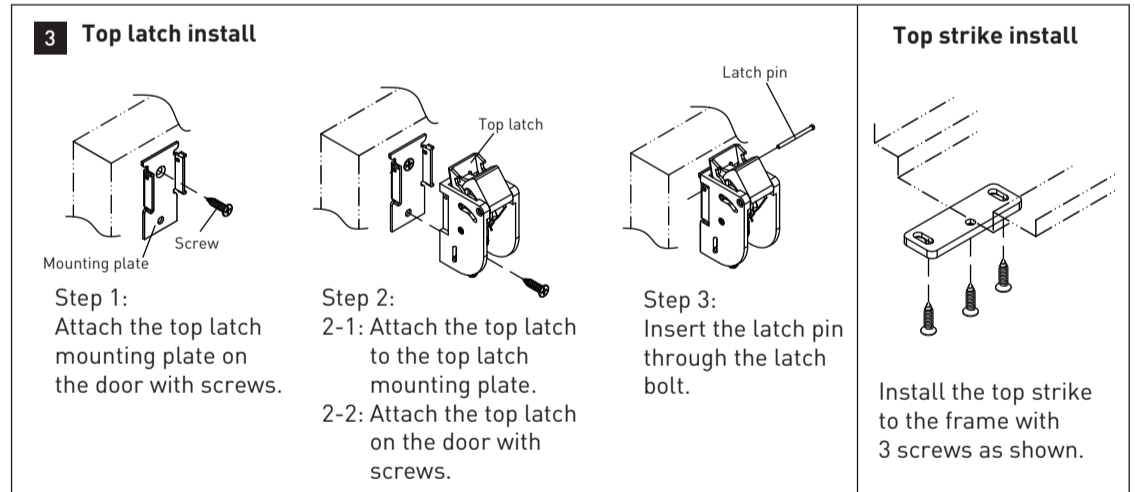
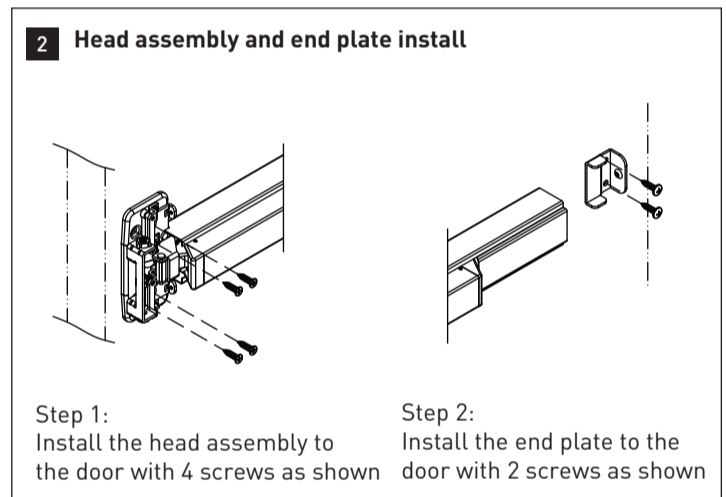
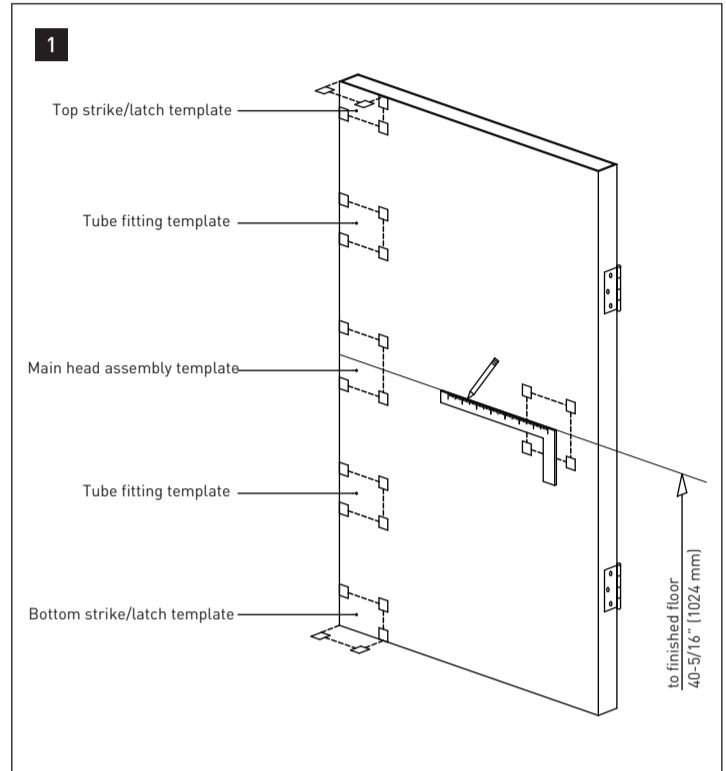
- For steel prepared doors, drill/tap and use supplied machine screws.
- For thin gauge metal, non-prepared doors or for labeled wood doors use thru bolts.
- See template for details on mounting screws.

DOOR HANDING GUIDE:



- A - Top strike
- B - Top latch
- C - Head assembly
- D - Bottom latch
- E - Bottom strike
- F - End plate
- G - Push bar
- H - Dogging access

Dogging:
Depress and hold push bar, insert dogging wrench and turn 90°. The push bar will remain depressed and the latch will remain retracted.



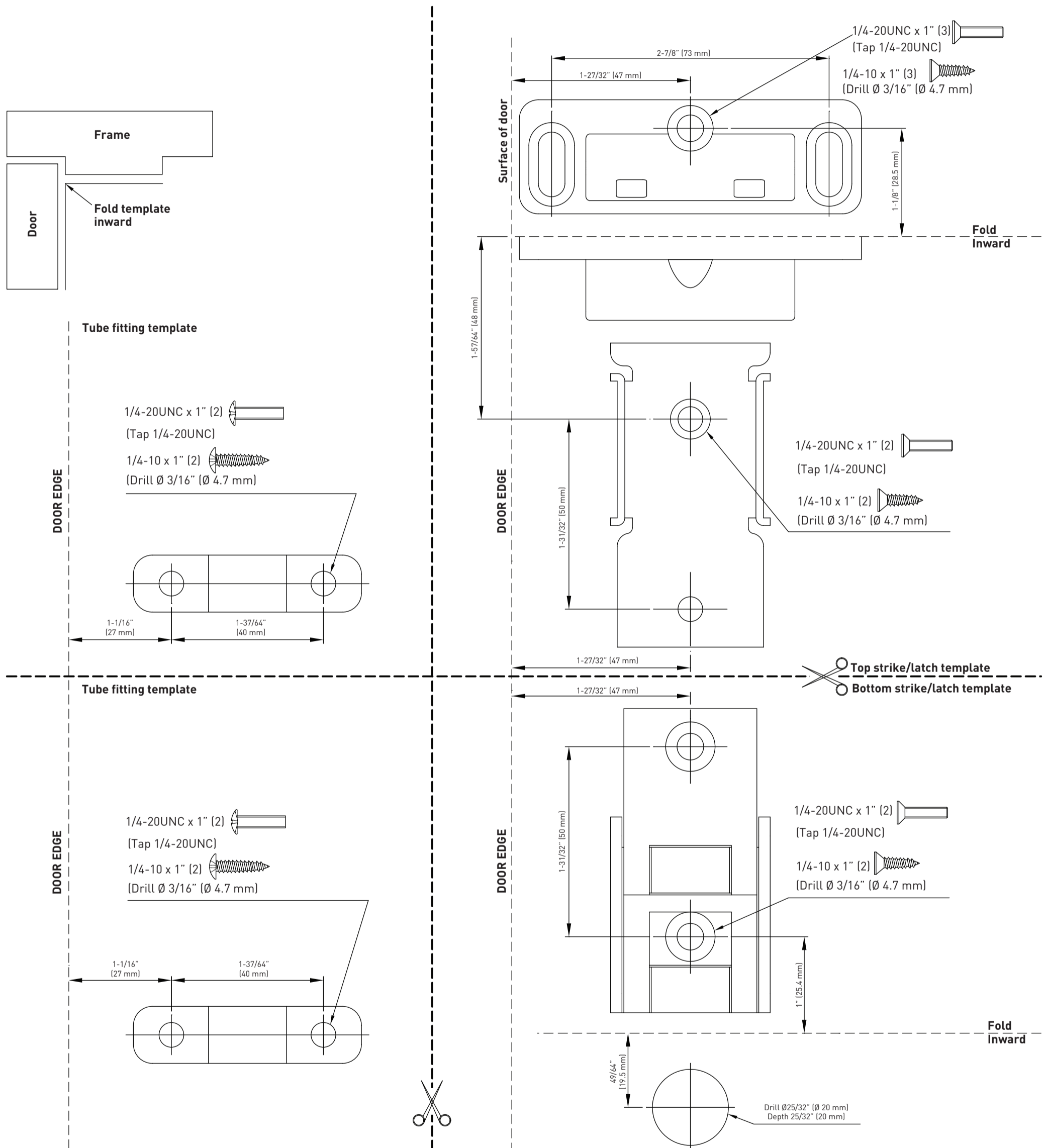
WEST 1-800-267-4774 | EAST 1-800-387-7064 | taymor.com

© REGISTERED TRADEMARK OF TAYMOR INDUSTRIES LTD.
January 2013

IMPORTANT document includes template must print at 100%

Taymor

TEMPLATE
9700V SERIES SAFETY-RATED SURFACE VERTICAL ROD EXIT DEVICE



CUSTOMER SERVICE
WEST 1-800-267-4774 | EAST 1-800-387-7064 | taymor.com

© REGISTERED TRADEMARK OF TAYMOR INDUSTRIES LTD.

January 2013

IMPORTANT document includes template must print at 100%



TEMPLATE
9700V SERIES SAFETY-RATED SURFACE VERTICAL ROD EXIT DEVICE

Main head assembly template

