



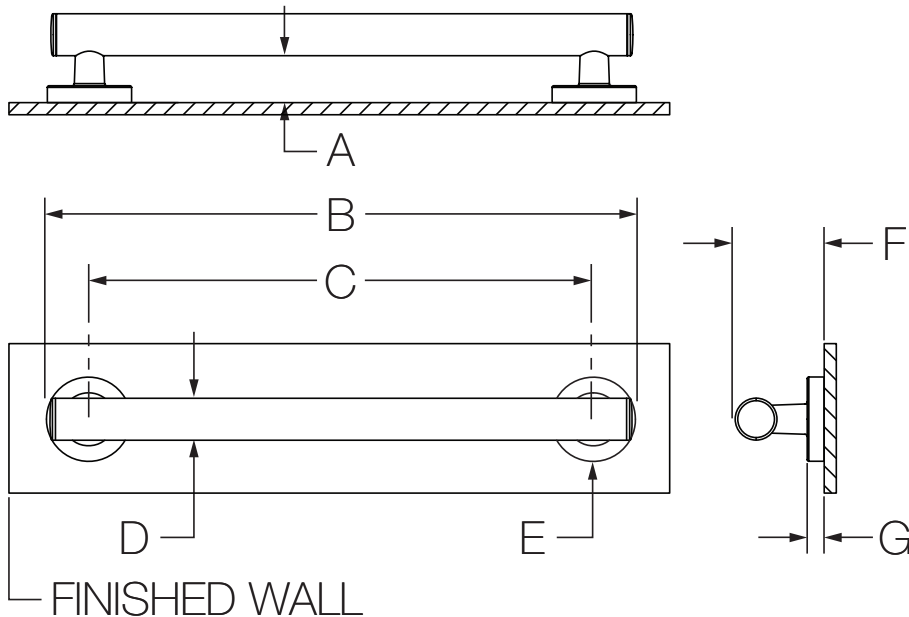
Location:



353GB-12 (18, 24, 36, 42)
 ADA Grab Bar Series
Specification Submittal

Model Numbers	Specification
<input type="checkbox"/> 353GB-12 12" Grab Bar for ADA Applications <input type="checkbox"/> 353GB-18 18" Grab Bar for ADA Applications <input type="checkbox"/> 353GB-24 24" Grab Bar for ADA Applications <input type="checkbox"/> 353GB-36 36" Grab Bar for ADA Applications <input type="checkbox"/> 353GB-42 42" Grab Bar for ADA Applications	<ul style="list-style-type: none"> • Supports up to 250 lbs. • 1-1/2" bar diameter • 3" flange diameter • Bar extends 1-1/2" from wall • Concealed mounting for a clean look • Meets WW-P-541/8B Federal Specification for Manufacturing • Meets ADA load requirements when properly installed • Stainless steel construction • Grab bar compatible with Winglts stainless steel grab bar fasteners (p/n GBW40) for drywall applications
Finish Options	Warranty
<input type="checkbox"/> -STN <i>Satin Nickel finish</i> Note: Append appropriate -suffix to model number.	Limited Lifetime - to the original end purchaser in consumer/residential installations. 5 Years - for industrial/commercial installations. Refer to www.symmons.com/warranty for complete warranty information.

Dimensions



Measurements	
A	1-1/2", 38 mm
B	15", 381 mm (353GB-12)
	21", 533 mm (353GB-18)
	27", 686 mm (353GB-24)
	39", 991 mm (353GB-36)
C	45", 1143 mm (353GB-42)
	12", 305 mm (353GB-12)
	18", 457 mm (353GB-18)
D	24", 610 mm (353GB-24)
	36", 914 mm (353GB-36)
	42", 1067 mm (353GB-42)
E	Ø 1-1/2", 38 mm
F	(2x) Ø 3-1/16", 78 mm
G	3-1/16", 78 mm
	1/2", 13 mm

Note: Dimensions subject to change without notice.