



Location:

S-3602-TRM, S3602TRMTC  
Tub/Shower Trim  
**Specification Submittal**



**Feature Highlights**

- Duro Tub/Shower Trim
- Requires Temptrol® Pressure Balancing Tub/Shower Valve
- Integral diverter control
- Metal lever handle
- 7" non-diverter tub spout
- 1 mode showerhead
- 2.5 gpm (9.5 L/min) flow restrictor
- Components shall be metal and nonmetallic construction, plated in standard Polished Chrome finish
- Available with TA-10 flow control spindle and T-12A cap assembly for Temptrol valve bodies installed with Test Cap (order p/n S3602TRMTC)

**Model Numbers**

- S-3602-TRM**  
Tub/Shower Trim with integral diverter control, Temptrol Pressure Balancing Tub/Shower Valve ordered separately
- S3602TRMTC**  
Tub/Shower Trim with integral diverter control, TA-10 flow control spindle and T-12A cap assembly, must order Temptrol valve with Test Cap

**Compliance**



- ASME A112.18.1/CSA B125.1



**Warranty**

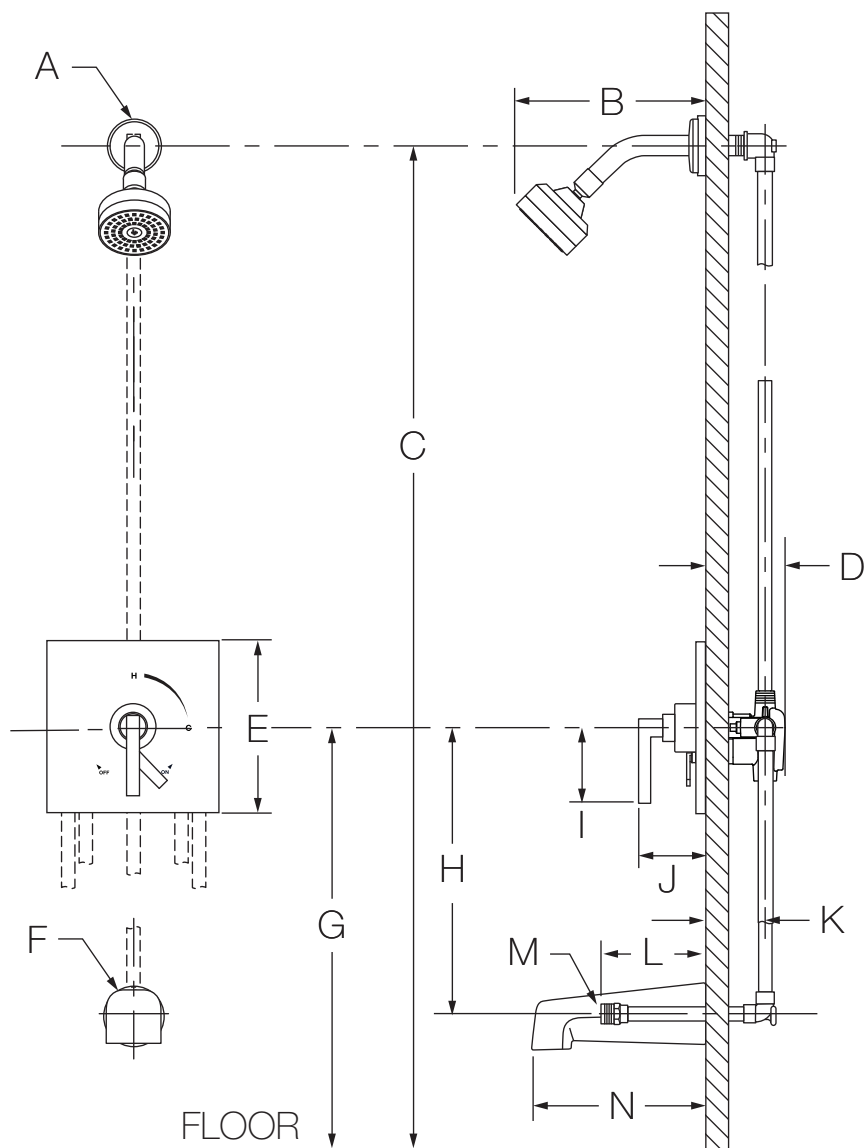
**Limited Lifetime** - to the original end purchaser in consumer/residential installations.  
**5 Years** - for industrial/commercial installations.  
Refer to [www.symmons.com/warranty](http://www.symmons.com/warranty) for complete warranty information.  
Go to [www.symmons.com/register](http://www.symmons.com/register) to register your Symmons product.

**Options/Modifications**

- 1.5**  1.5 gpm (5.7 L/min) flow restrictor
- 2.0** 2.0 gpm (7.6 L/min) flow restrictor
- EX** Exposed column/slide bar, hand shower bracket and hand shower wand (36EX)
- L1** Less showerhead
- LW**  Wide lever handle (chrome finish only)
- REB** Rebuild trim kit, includes TA-10 and TA-4
- SH1** Alternative 352SH Dia showerhead
- SH2** Alternative 352SH-3, 3 mode showerhead
- SH4** Alternative 361SH square showerhead
- SS** Slip spout on any tub/shower unit
- T4** Alternative 361TS, square non-diverter tub spout
- VP** Vandal resistant escutcheon screws in place of standard screws
- BBZ** Brushed Bronze finish
- MB** Matte Black finish
- STN** Satin Nickel finish

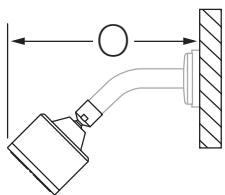
**Note:** Append appropriate -suffix to model number.

# Dimensions

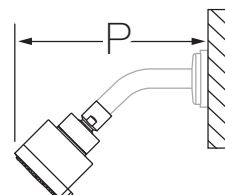


| Measurements |                                                                                 |
|--------------|---------------------------------------------------------------------------------|
| A            | Ø 2-1/2", 64 mm                                                                 |
| B            | 6", 152 mm                                                                      |
| C            | Ref. 77", 1956 mm                                                               |
| D            | 3-1/2", 89 mm                                                                   |
| E            | Sq. 7-1/2", 191 mm                                                              |
| F            | Ø 2-1/2", 64 mm                                                                 |
| G            | Ref. 32", 813 mm                                                                |
| H            | Ref. 12", 305 mm                                                                |
| I            | 3-1/8", 79 mm                                                                   |
| J            | 3-1/2", 89 mm                                                                   |
| K            | Rough-in<br>2-3/8" ± 1/2", 60 mm ± 13 mm                                        |
| L            | 5-1/4", 133 mm                                                                  |
| M            | Male 1/2-14 NPT fitting<br>must protrude 5-1/4" (133 mm)<br>from finished wall  |
| N            | 7", 178 mm                                                                      |
| O            | 6-3/4", 171 mm                                                                  |
| P            | 6-3/4", 171 mm                                                                  |
| Q            | 5-5/8", 143 mm                                                                  |
| R            | 2-1/4", 57 mm                                                                   |
| S            | 2-1/2", 64 mm                                                                   |
| T            | 5-5/8", 143 mm                                                                  |
| U            | Male 1/2-14 NPT fitting<br>must protrude 4-7/16" (113 mm)<br>from finished wall |

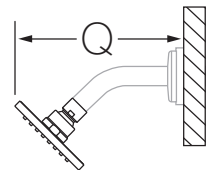
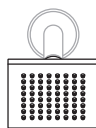
**-SH1**



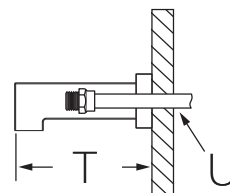
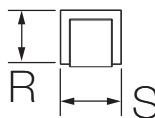
**-SH2**



**-SH4**



**-T4**



**Notes:**

- 1) Valve body and piping not included and shown as reference only.
- 2) Plaster shield (p/n T-176) for dry wall, plaster or other type walls 1/2" or greater.
- 3) All dimensions measured from nominal rough-in (see K as reference).
- 4) Dimensions subject to change without notice.